

# RDCC: Real-time Display and Coordination Center

Mike Daniels

NCAR/ATD and UOP/JOSS

# What is it?

- Real-time displays of data from NSF platforms and other instruments
- Advanced communications infrastructure (such as satcom, chat, video conferencing, webcams) for major field project sites
- General computing systems support where required



# RDCC – Displays (as used in BAMEX)

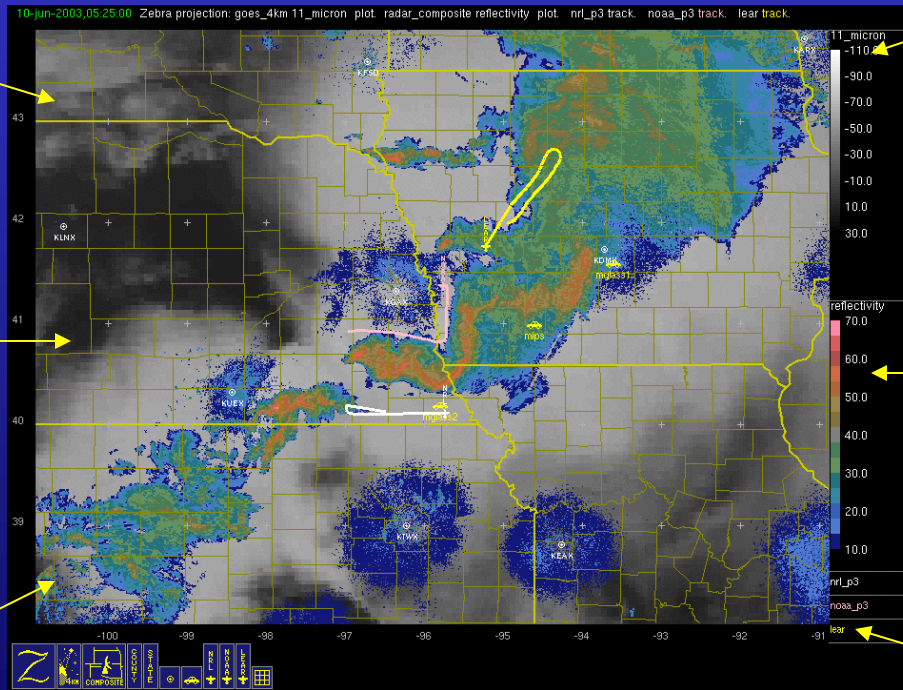
WMI Learjet



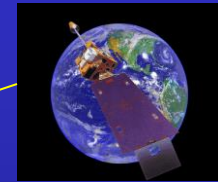
NRL P-3



NOAA P-3



NASA GOES



GBOS locations



NEXRAD

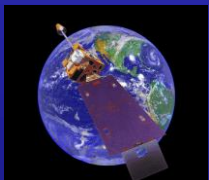


# RDCC – New Display Software (as tested in IHOP)

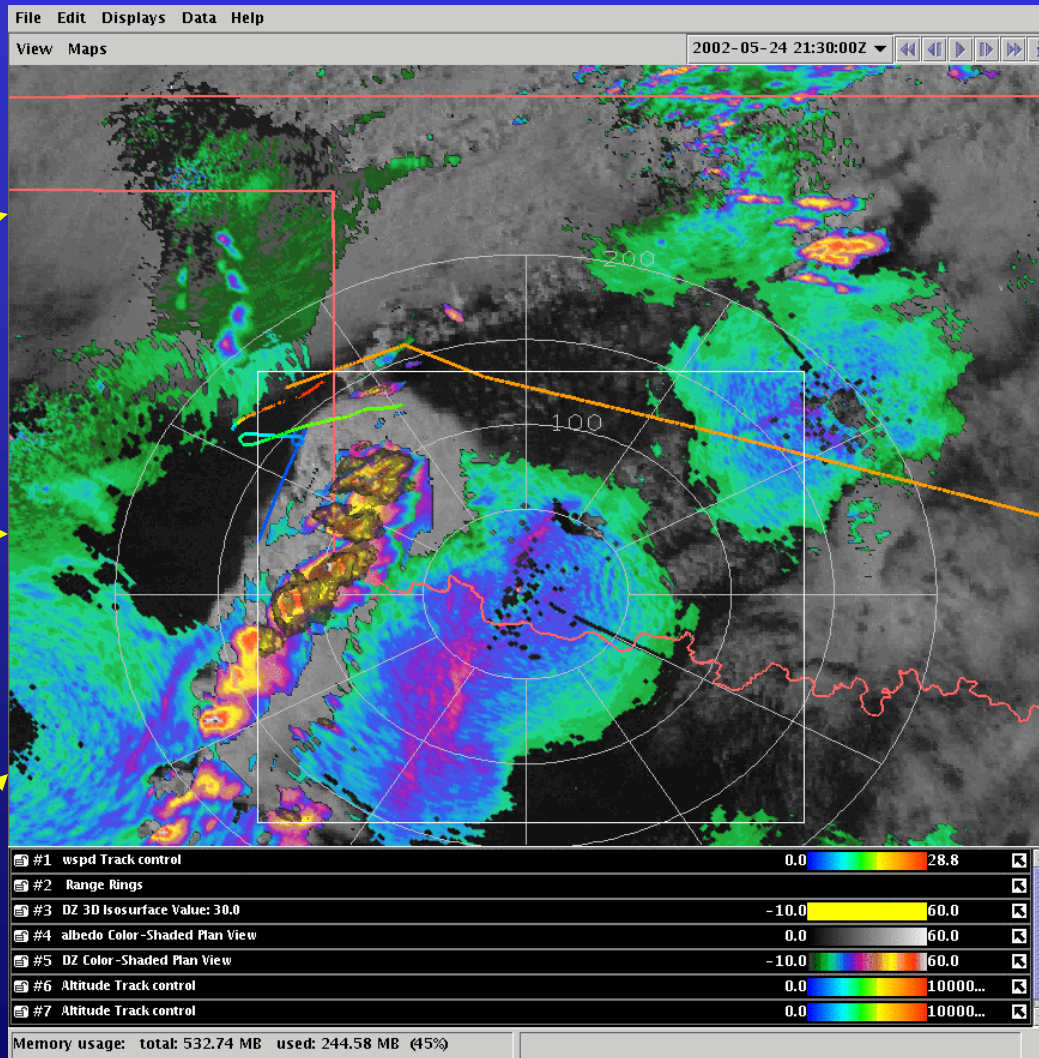
NASA DC-8



NASA GOES



NRL P-3



NSF Mobile GLASS



NSF S-Pol



NEXRAD via CRAFT





# Demonstration

# RDCC: A New NSF Service for Science and Research

- Offering a menu of options and configurations (ala aircraft, ISS, S-Pol):
  - Data ingest infrastructure
  - Integrated, multi-platform displays
  - Systems and computer networking support
  - Collaborative web tools (chat, discussion groups conferencing, etc.)
- A joint effort between ATD and JOSS



# Questions/Comments?

