

# **RICO Operations Support**

**Operations Planning**

**Operations Center Functions**

**Daily Timeline**

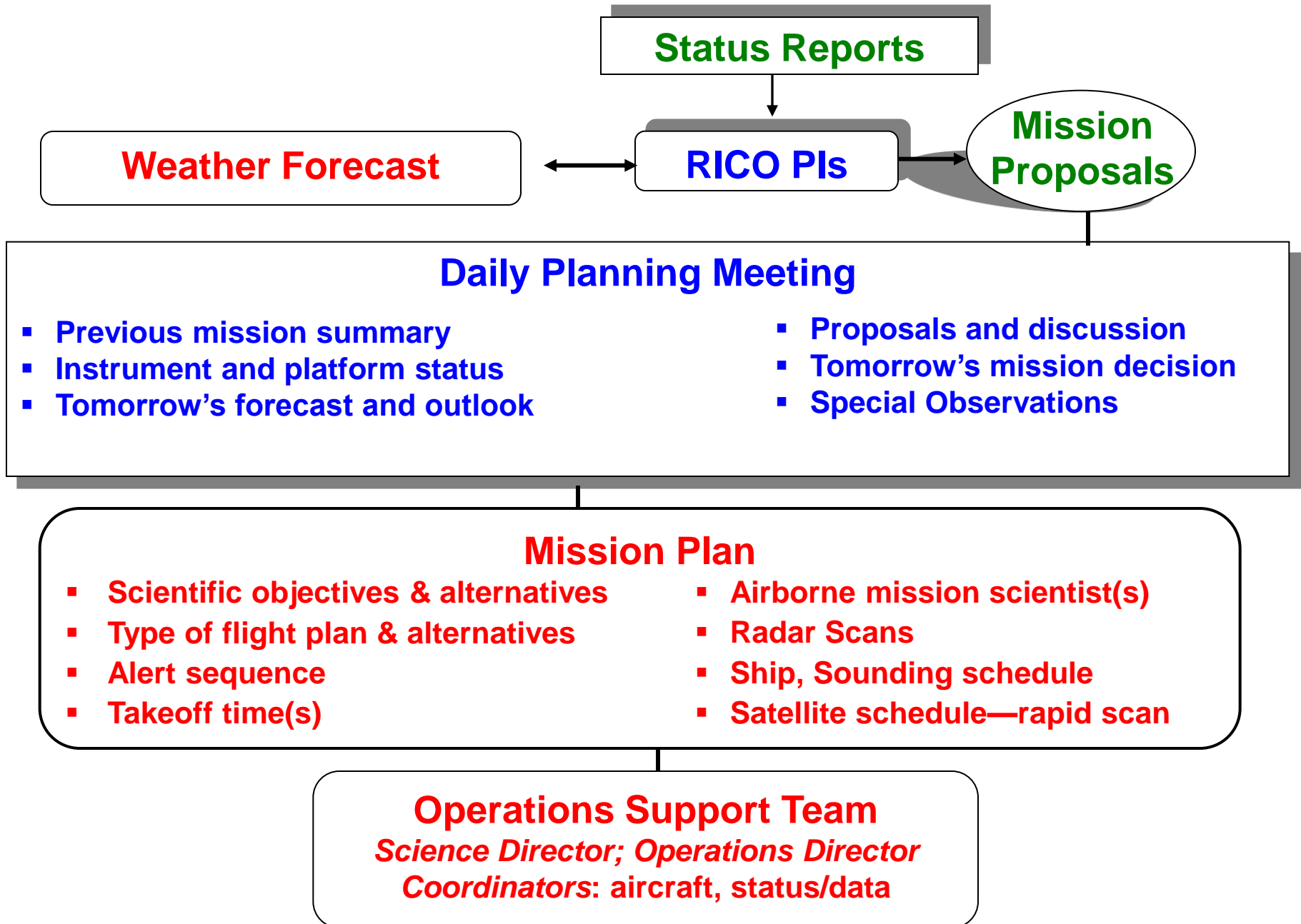
**Communications**

**Logistics**

**Operational Satellite Data Collection/Display**

**Data Management (including Data Policy)**

# RICO Daily Planning Process



# **RICO Operations Center Functions**

**Facility Status—Field Catalog**

**Forecast/Nowcast**

**Daily Planning Meeting—Mission Plan**

**Flight Planning/ATC Coordination**

**Radar, Sounding, Ship Plans/Notification**

**Operations Coordination**

**Flight Coordination**

**Radar, Soundings, Ship Coordination**

**Communications & Field Displays**

**Mission Debriefing**

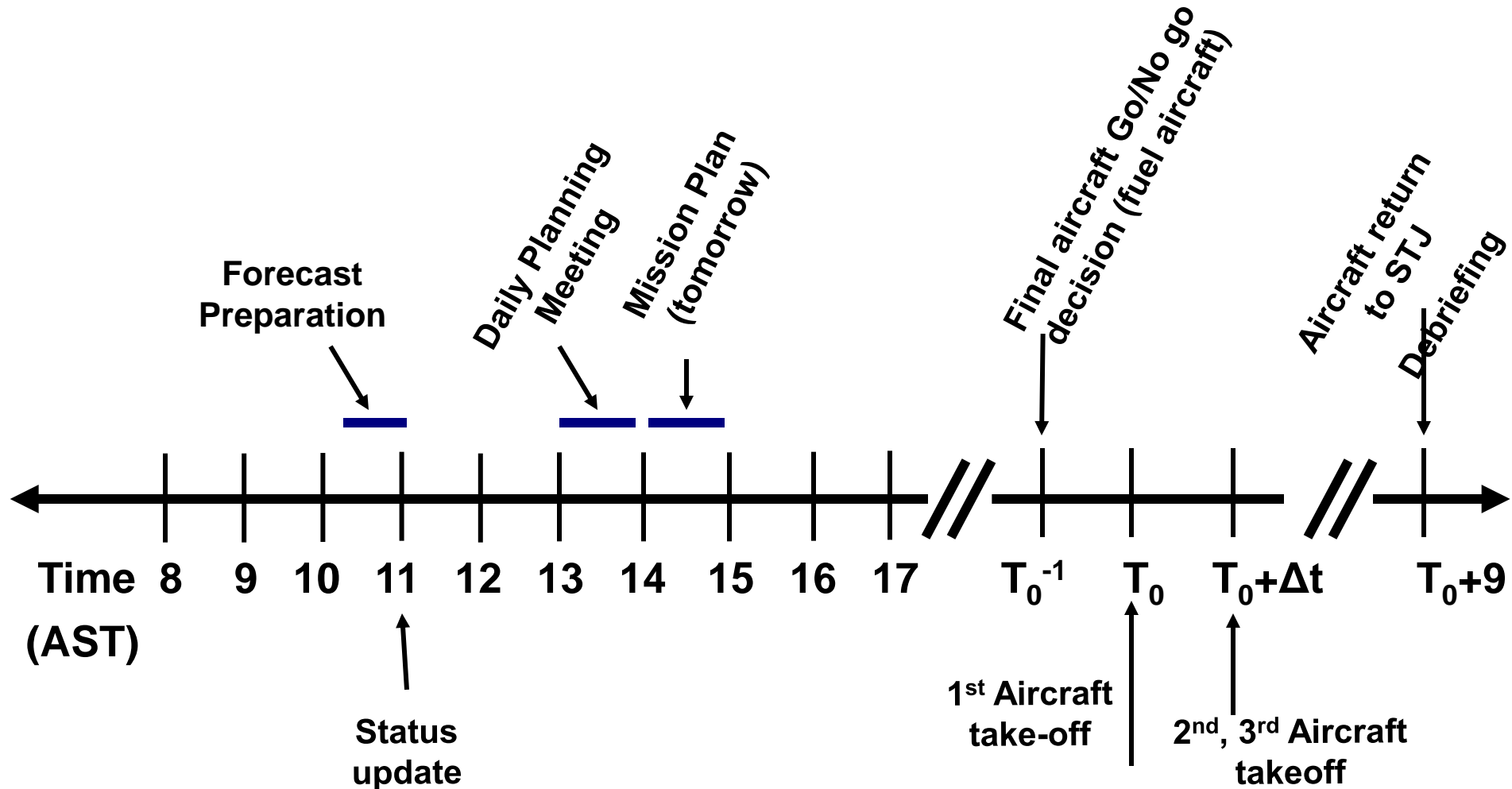
**Operations Summary—Field Catalog**

**Daily Operations Plan**

**Scientific Mission Summaries**

# RICO Daily Timeline for Operations

7 days/week unless down day



# RICO Site Visit

- Operations Center Space (workspace, meeting, labs, hazmat storage)
- Operations Center Services (power—110, special, Internet access—wide bandwidth)
- Site Arrangements (security, fee waivers, ATC arrangements, customs, frequency allocations)
- Weather Forecasting Support (AMO collaboration, JOSS satellite receiver)
- Local Logistics (centralized housing—hotel, apartment, rental cars, banking, medical)

# RICO Logistics Questionnaire Respondents

Brigitte Baeuerle (ATD Folks Barbuda)

Alan Blyth

Alan Bandy

Bjorn Stevens

Brad Baker

Brigitte Baeuerle

(ATD Folks- Antigua (except RAF))

Charles Knight

Cynthia Twohy

Donald Lenschow

Herman Russchenberg

Jean-Louis Brenguier

Jim Anderson

Patrick Chuang

Jim Hudson

Larry Oolman

Sandra Yuter

Sonia Lasher-Trapp

Steve Krueger

William Cotton

Hermann Gerber

# RICO Logistics Survey Summary

(details available at [www.joss.ucar.edu/rico/webresponse](http://www.joss.ucar.edu/rico/webresponse))

- 20 responses representing ~130 PIs, Co-Is and project/facility staff
- 58 computers on Antigua, 11 on Barbuda, operating Windows 98, 2000, ME, XP, Unix/Linux and MAC OS
- 25-30 on Barbuda on average, excluding set-up/tear-down of radar systems
- 60-70 on Antigua on average, including aircraft facility support staff
- Space needs: (excludes storage space)
  - ~1350 sq.ft office space (not including RAF) Antigua
  - ~670 sq.ft. lab space (not including RAF) Antigua
  - ~350 sq.ft. office/lab space Barbuda

# RICO Logistics Questionnaire results (cont)

- Other space needs include shipping box storage, stable optical table, instrument benches/tables
- Chemistry needs;  
de-ionized water, ultra-pure air, acetone, paint thinner helium, “gas cylinders”, liquid nitrogen (barbuda), pure drinking water
- Power requirements:
  - Antigua; All manner: 110V/60Hz, 240/50, 220/60, 28VDC  
230/60 (60A) or 208/60 60A (3 phase)
  - Barbuda; 230V, 3 phase 380V, 110-240 50/60Hz



## **RICO Logistics Questionnaire results (cont)**

- Everyone would like access to the Internet at some point
- Rental cars: 14 affirmative responses (likely more required up to ~20-25)
- Approximate lodging information: ~20 apartments  
~45 hotel rooms

# RICO Lodging Information

- **Hotel: Royal Antiguan Resort** ([www.eliteislandresorts.com](http://www.eliteislandresorts.com))  
35 rooms blocked: 20 standard @ \$110 per night, 15 bayview @ \$139/night. Taxes are included in this rate; meals are not. Additional people in room are extra.
- **Call 1-800-344-0356, option 2** to reserve by **March 31** and refer to the RICO group. Your credit card will be charged **3 nights' deposit at booking**, and will be **charged the balance 30 days prior to your check-in date**. You may cancel without penalty up to 31 days prior to your arrival date. Cancellations after that date will not receive a refund.
- **Other possible lodging options: Jolly Harbour Villas** (also Elite Resorts) and **Yepton Beach Resort** (also villas) Information on these properties will be forthcoming.

**Questions?** Contact Sara Metz (JOSS)  
at 303-497-8166, [smetz@ucar.edu](mailto:smetz@ucar.edu)



# RICO Shipping Information

## Surface Shipment estimated time schedule

- The suggested route is by flatbed truck from Boulder to Port of Palm Beach, Florida.
- Our initial estimate for shipping to Antigua\*\* is at least 3 weeks (1 week by truck and 1+ week by ship). Allowing 3 weeks for complete transshipment seems prudent \*\*Barbuda will take longer

## Airborne Shipment estimated time schedule

- Assuming that the Airfreight is coming from Boulder allow 10- 14 days to be safe as we may have to truck the cargo to Miami.

Shipping is an individual responsibility—

Contact facilities for possible shipment consolidation