

Satellite products JOSS will provide during RICO:

Table 6.9 Browse Products provided in the JOSS Field Catalog (Near real-time)

Instrument	Channel/Product	Spatial Resolution	Temporal Resolution	File Format
GOES-12	1	1 km	30 min, 15 SRSO	gif (Image)
	3,4	4 km	30 min, 15 SRSO	gif (Image)
	Ch2-Ch4	4 km	30 min, 15 SRSO	gif (Image)
MODIS	1,2	250 m	As available	gif (Image)
	Color Composite	500 m	As available	gif (Image)
QuikSCAT	Winds	25 km	2x Daily	png (Image)
AVHRR-GOES	SST Composite	6 km	3 hourly	gif (NESDIS)
GOES	Cloud Drift Winds	Low-level Upper-level	6 hourly	gif (CIMMS)
Polar Orbiting	Overpass Times	-	-	Table
	Overpass Swaths	-	-	gif (Image)

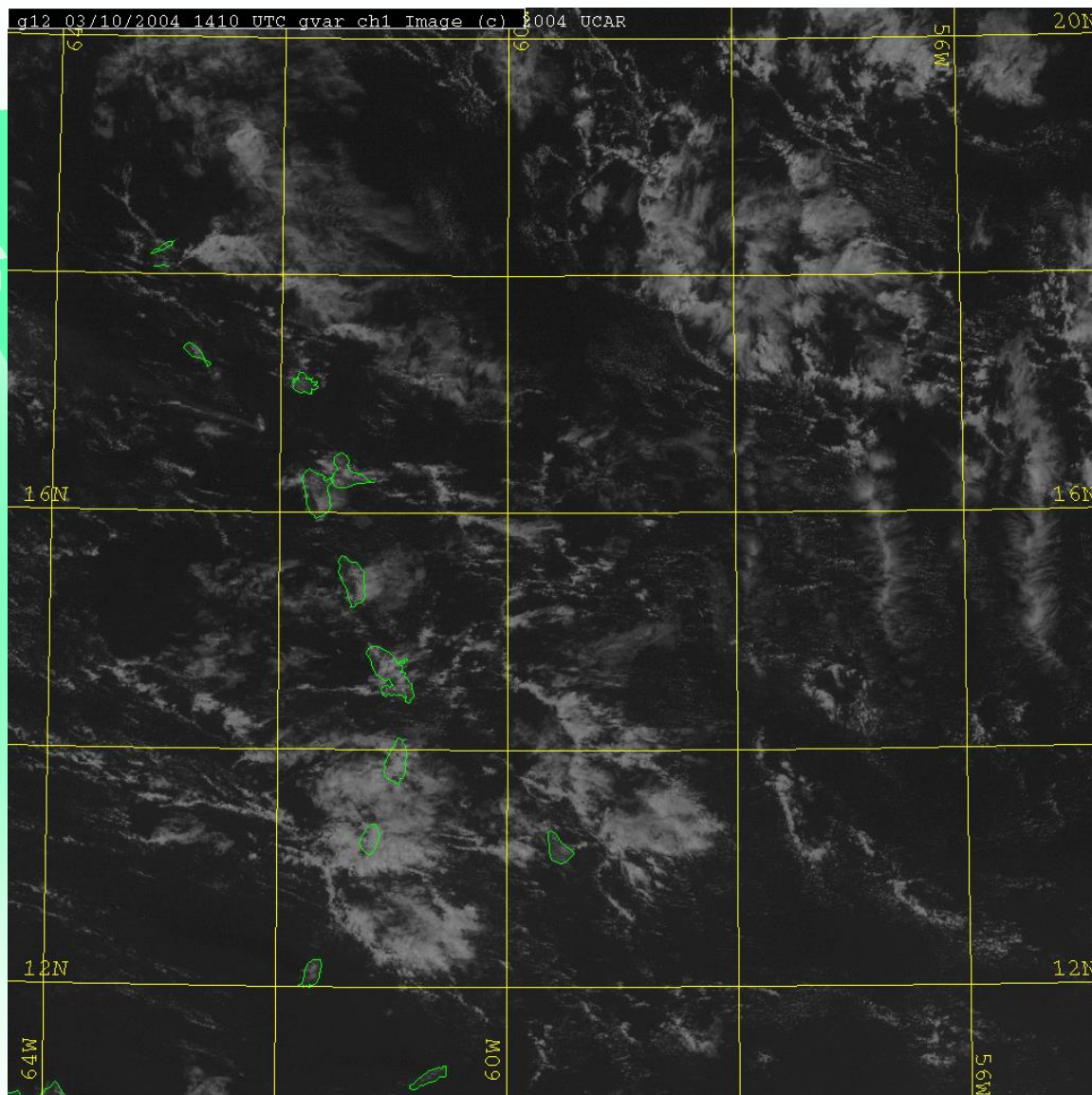
Super Rapid Scan Operations (SRSO)

- SRSO can be requested for a period of no longer than 6 hours per day
- NWS requests take precedence, so RICO request could be denied
- NESDIS requires at least 2 hrs notice before SRSO can commence SRSO sector is limited to 1000 x 1000 km

Table 7.2 GOES-East SRSO 3-Hour Block

TIME (UTC) SCAN SECTOR DURATION (MM:SS)

00:45:00	NORTHERN HEMISPHERE	9:44
00:55:00	SRSO SECTOR	1:00
00:59:05	CONTINENTAL US (CONUS)	4:43
01:04:00	SRSO SECTOR	8:00
01:15:00	NORTHERN HEMISPHERE	9:44
01:25:00	SRSO SECTOR	1:00
01:30:00	CONTINENTAL US (CONUS)	4:43
01:35:00	SRSO SECTOR	8:00
01:45:00	NORTHERN HEMISPHERE	9:44
01:55:00	SRSO SECTOR	1:00
01:59:05	CONTINENTAL US (CONUS)	4:43
02:04:00	SRSO SECTOR	8:00
02:15:00	NORTHERN HEMISPHERE	9:44
02:25:00	SRSO SECTOR	1:00
02:30:00	CONTINENTAL US (CONUS)	4:43
02:35:00	SRSO SECTOR	8:00
02:45:00	FULL DISK	26:06
03:15:00	NORTHERN HEMISPHERE	9:44
03:25:00	SRSO SECTOR	1:00
03:30:00	CONTINENTAL US (CONUS)	4:43



RICO Sector



Data JOSS will collect:

Table 6.8 Satellite Data Archived by JOSS

Instrument	Channel/ Product	Archived Resolutio n	Units	File Format	Comments
GOES-12	1	1, 4 km	Albedo	HDF,TDF	Raw data is not saved from GOES, only calibrated units.
	2	4 km	Temp(C)	HDF,TDF	
	3	4 km	Temp(C)	HDF,TDF	
	4	4 km	Temp(C)	HDF,TDF	
	6	4 km	Temp(C)	HDF,TDF	
AVHRR	1-5	1 km	Raw	Level 1B	Data of Opportunity that are received from CLASS
DMSP-OLS ?	VIS, IR	550 m	Calibrated, Navigated	HDF, GeoTIFF?	Possible arrangement with NGDC

Other Satellite Data Archives:

Archive Sources		
Instrument	Archive Center	URL
MODIS	NASA/GSFC	http://modis-atmos.gsfc.nasa.gov
MISR	NASA/JPL	http://www-misr.jpl.nasa.gov
ASTER	NASA/JPL	http://asterweb.jpl.nasa.gov
SeaWiFS	NASA/GSFC	http://seawifs.gsfc.nasa.gov/SEAWIFS.html
QuikSCAT	NASA/JPL	http://winds.jpl.nasa.gov/missions/quikscat/index.cfm

