

# MAIR-E 2025 Site Survey Report

Austin, TX

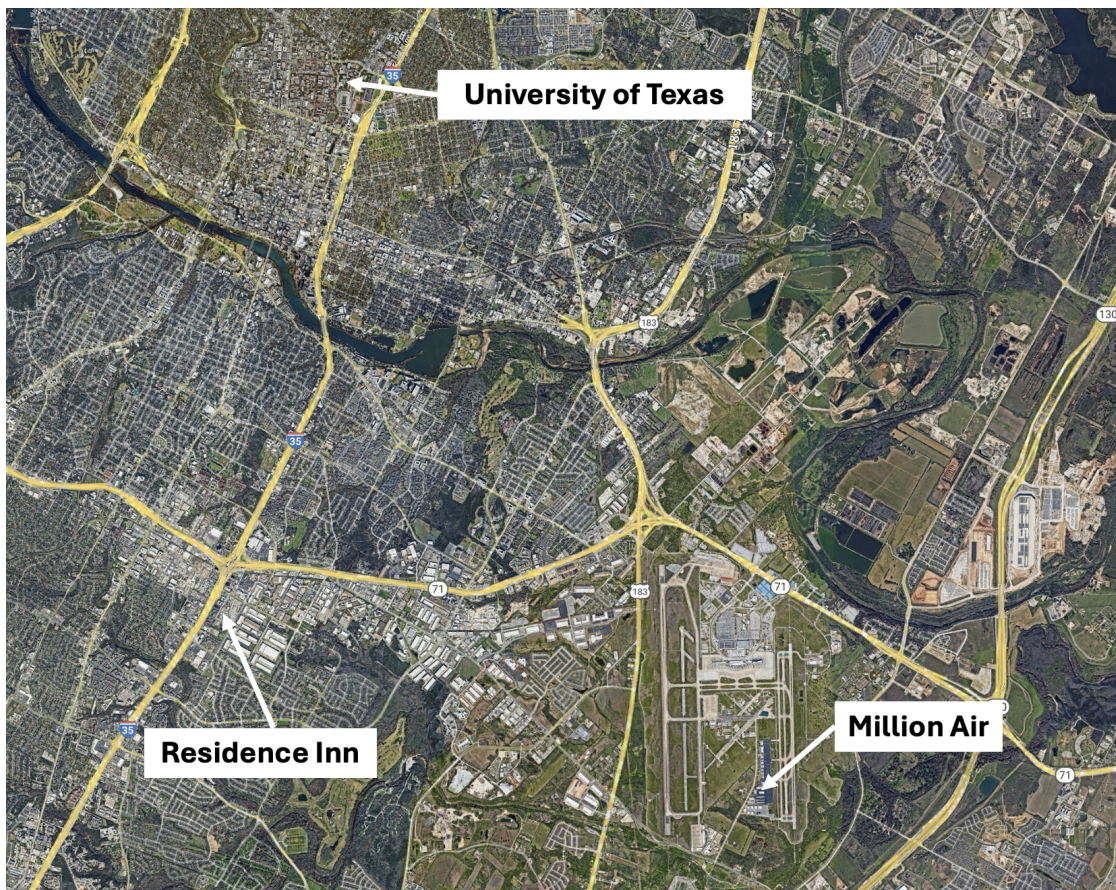
7 - 9 April 2025

Paul Harper, Brent Markowski, Cory Wolff

MAIR-E will take place 15 - 30 September 2025 in Austin, TX. The MAIR-E team will total about 15 people from RAF and Harvard. The site survey team met with FBOs and hotels in Austin while also visiting the University of Texas to organize support for high bandwidth data transfer after each flight.

## Austin, TX (KAUS)

An overview of the Austin area and MAIR-E operations locations are shown in the image below. The airport can be reached from the hotel via local roads in approximately 15 minutes. The data transfer center at the University of Texas is 20-30 minutes from the airport, depending on traffic.



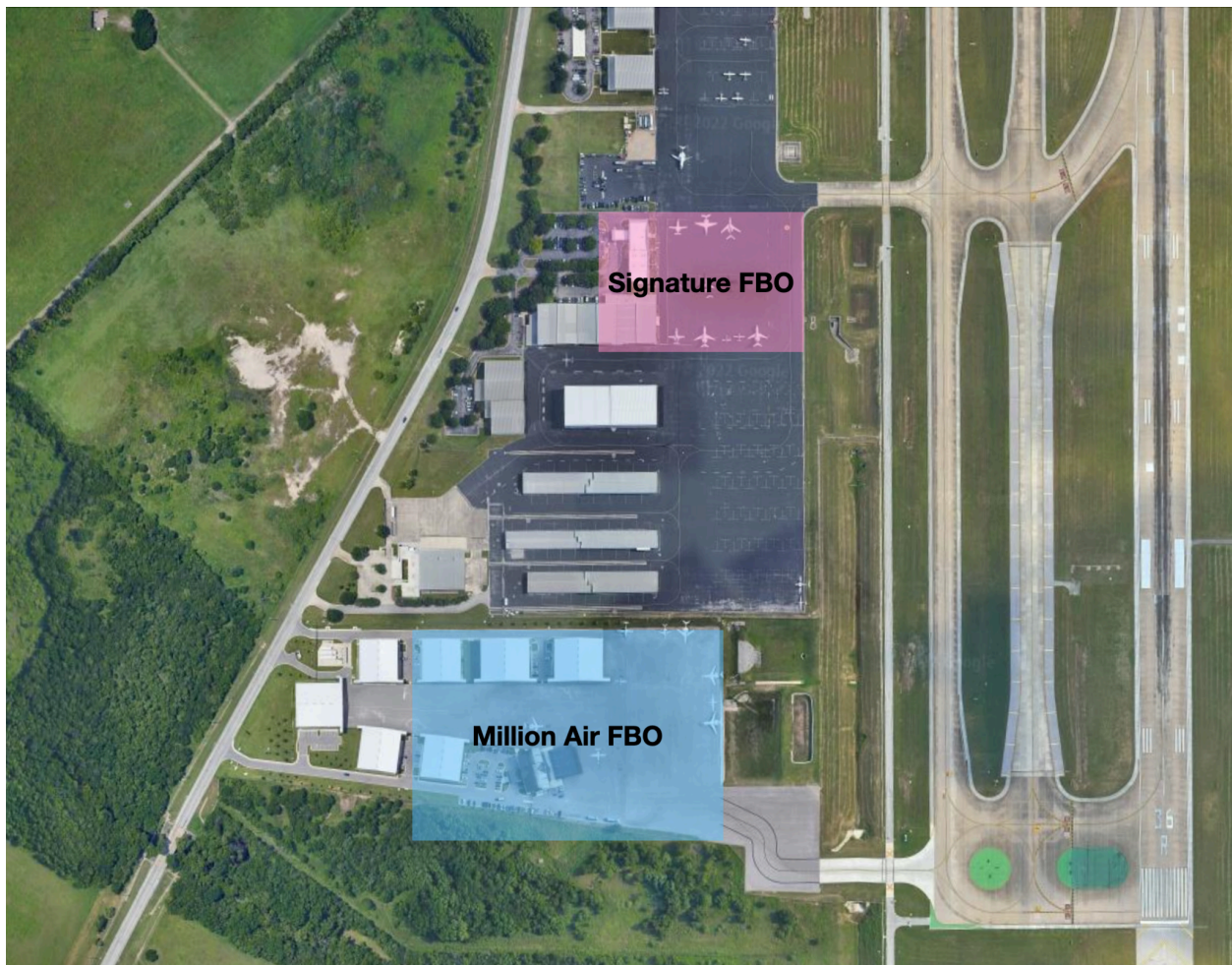
*Map showing pertinent locations in Austin, TX*



## Aircraft Operations

The team visited two fixed base operators (FBOs), shown below. The GV will base at Million Air as it has more ramp space, offers a consistent parking location, and is generally less busy. It has comfortable working spaces for participants and can offer short term use of a small conference room if needed. The GV will be parked on the east side of their ramp. A few pictures of the facility are shown below.

- Million Air: [4801 Emma Browning Avenue, Austin, Texas 78719](#)
- Point-of-contact: David Koss, [dkoss@millionair.com](mailto:dkoss@millionair.com), 757.618.3378
- Parking: Project parking will in the lot outside the FBO building
- WiFi connection: Available to customers
- Ramp access: Able to come and go by checking in with front desk
- Hangar: Not necessary for MAIR-E but likely available if needed for maintenance



*KAUS FBO locations.*



*Million Air interior, potential hangar space, and ramp views*

## Hotel

The Residence Inn Austin South will be the project lodging location. This extended stay hotel offers a kitchenette, a dining table, and a work desk in each room. The kitchenette also provides flatware, dinnerware, kitchen utensils, a stove, dishwasher, and a microwave. The hotel offers free hot breakfast, free WiFi, and a small gym for the guests. RAF has also negotiated the complimentary use of the larger and more modern gym at the Austin Marriott South for project participants. The Marriott is located less than a quarter mile north of the Residence Inn. There are multiple restaurants and grocery stores within a short drive of the hotel.

RAF is holding the rooms and will provide a rooming list to the hotel by August 26, 2025. All travelers will be responsible for their own payments.





*Residence Inn Austin South standard guest room.*



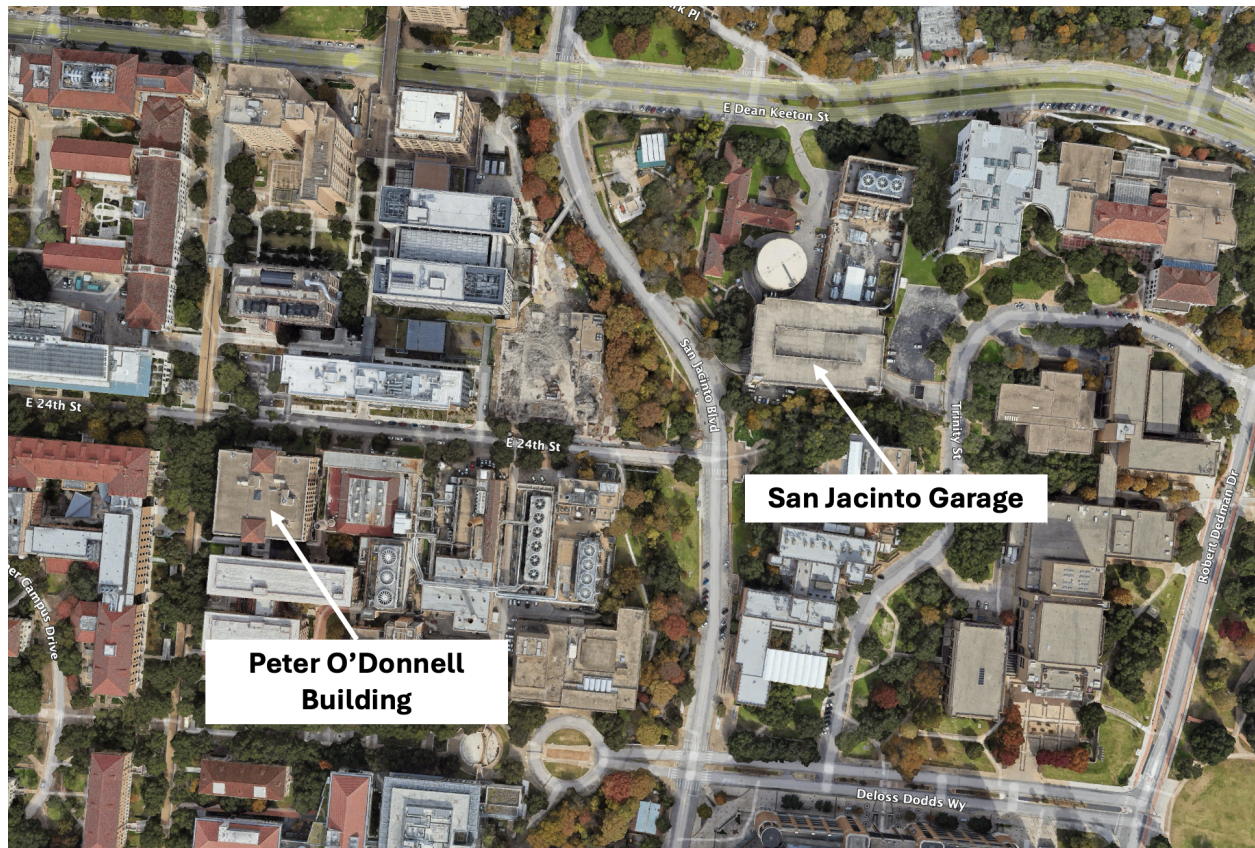
*The Residence Inn Austin South breakfast area; Gym at the Austin Marriott.*

## Data Transfer Center

Arrangements have been made with the Odin Institute for High Performance Computing at the University of Texas for a high bandwidth connection for transferring MAIR-E data post-flight. Secure office space will be available on the first floor of the Peter O'Donnell building ([201 E 24th St. Austin, TX](#)) where a laptop can be plugged in and left overnight. 24 hour building and room access will be provided to members of the team who will be responsible for the data transfer. A keycard will grant access to the west door of the building, and the office is just inside. A key will be needed to access the office. The list of names will need to be provided by July 1 so that there is time to get everyone in the UT system ahead of time. An appointment will be needed to pick up the cards and keys upon arrival in Austin.



Paid parking is available in the San Jacinto Garage ([2400 San Jacinto Blvd, Austin, TX](https://www.austintexas.gov/department/san-jacinto-garage)), which is about a 10 minute walk from the data transfer center. Options for closer parking may also be available and will be explored, but getting temporary short term parking on campus is difficult.



## Urgent Cares and Hospital

For minor, non-emergency health situations there are a variety of Urgent Care locations near the FBO and hotel.

### CareNow Urgent Care Riverside

- 1920 E Riverside Dr #110, Austin TX 78741
- 737.313.6840
- Hours: Mon thru Fri 0800-0200; Sat 0800-1900; Sun 0800-1700

### CareNow Urgent Care South Congress

- 208 W Ben White Blvd, Austin TX 78704
- 512.861.8060
- Hours: Mon thru Fri 0800-0200; Sat 0800-1900; Sun 0800-1700



Texas MedClinic Urgent Care

- 9900 S I35 Frontage Road, Austin TX 78748
- 512.291.5577
- Hours: Mon thru Sun 0800-2300

If needed, the nearest hospital to the airport is St. David South Austin Medical Center. It offers 24 hour emergency care and has a Level II Trauma Center and ICU.

- 901 W Ben White Blvd, Austin TX 78704
- 512.447.2211

In the case of an emergency, participants should always call 911.