

Microwave Temperature Profiler Preliminary Data

Julie Haggerty (NCAR)

M.J. Mahoney (JPL)

Performance Summary

RF01: San Jose-Antofagasta

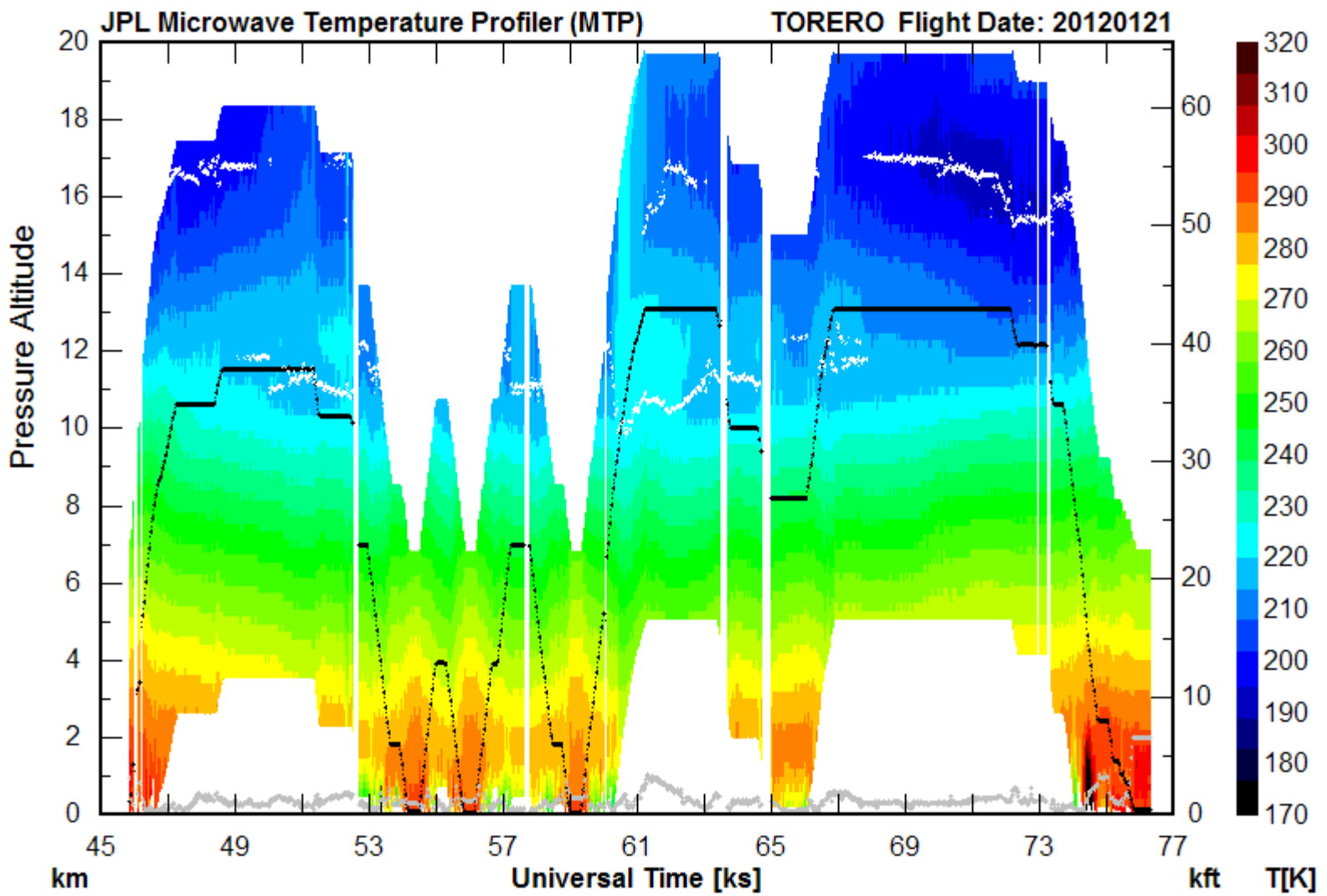
- Experienced controller software failure ~20 minutes after take-off; data probably not recoverable

RF02: Antofagasta southward

- Sensor performance good; retrieval quality mixed

RF03: Antofagasta westward

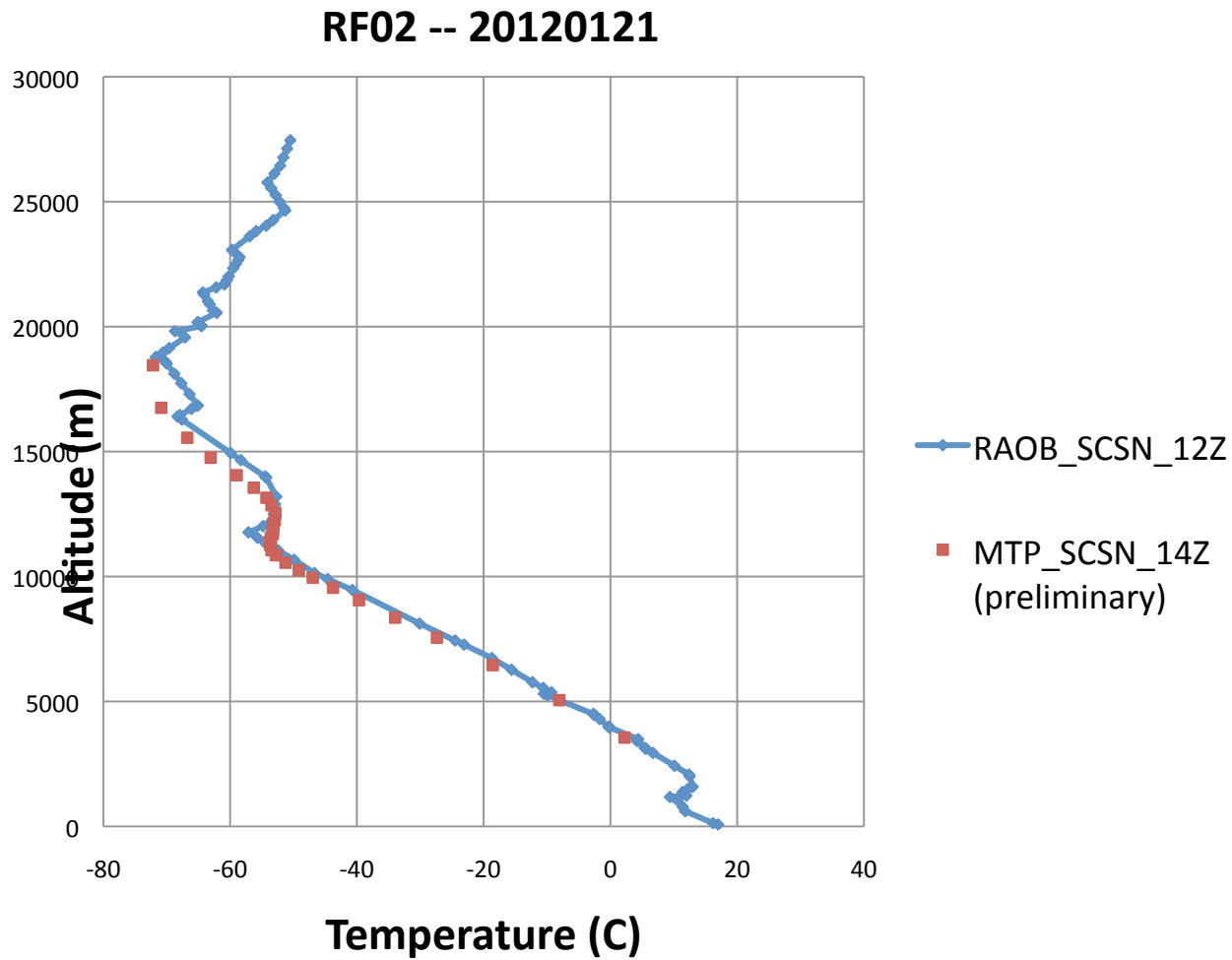
- Sensor performance good; retrieval quality better

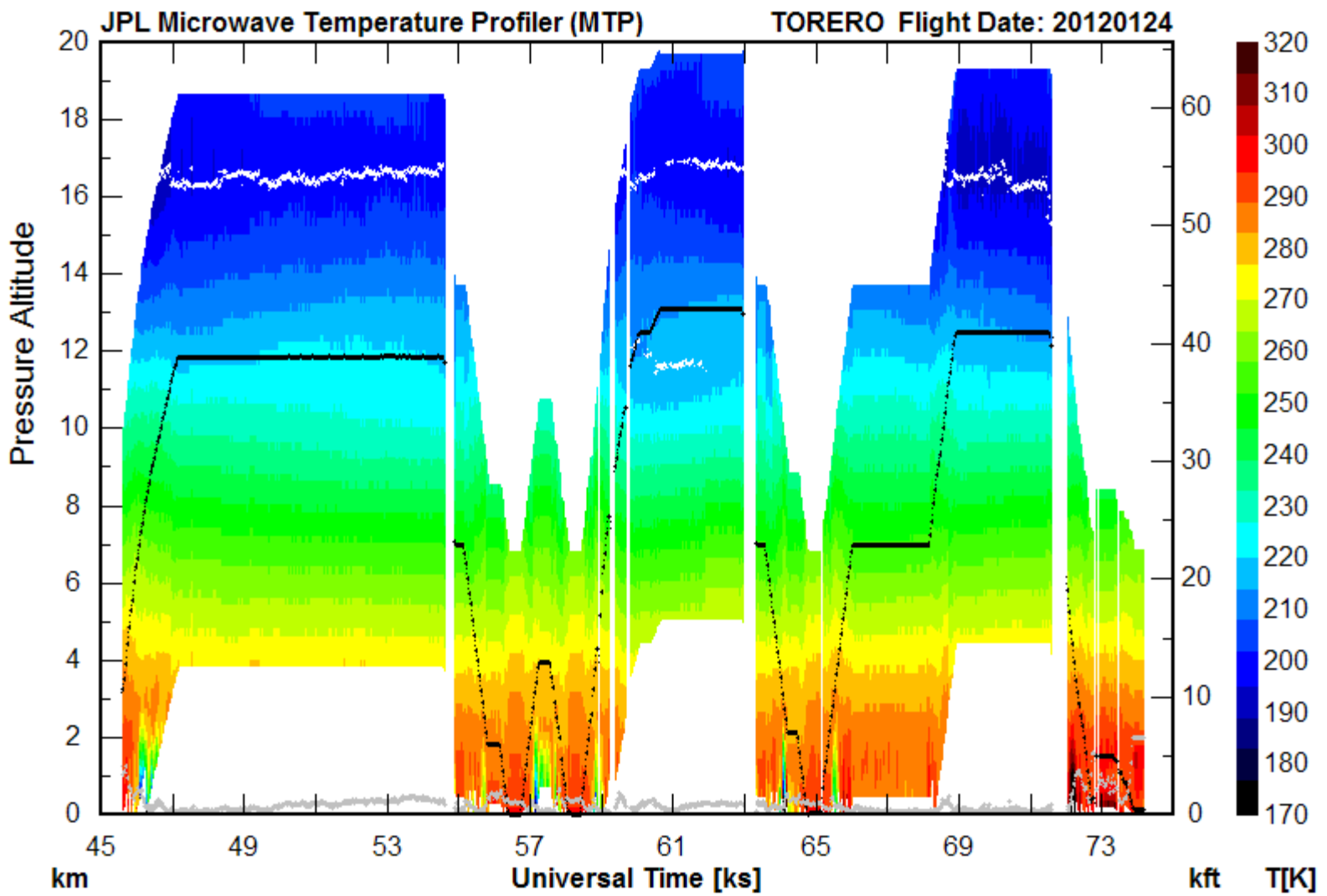


RF02: North-South flight track

Retrievals more challenging due to change in temperature structure with latitude → needs more work

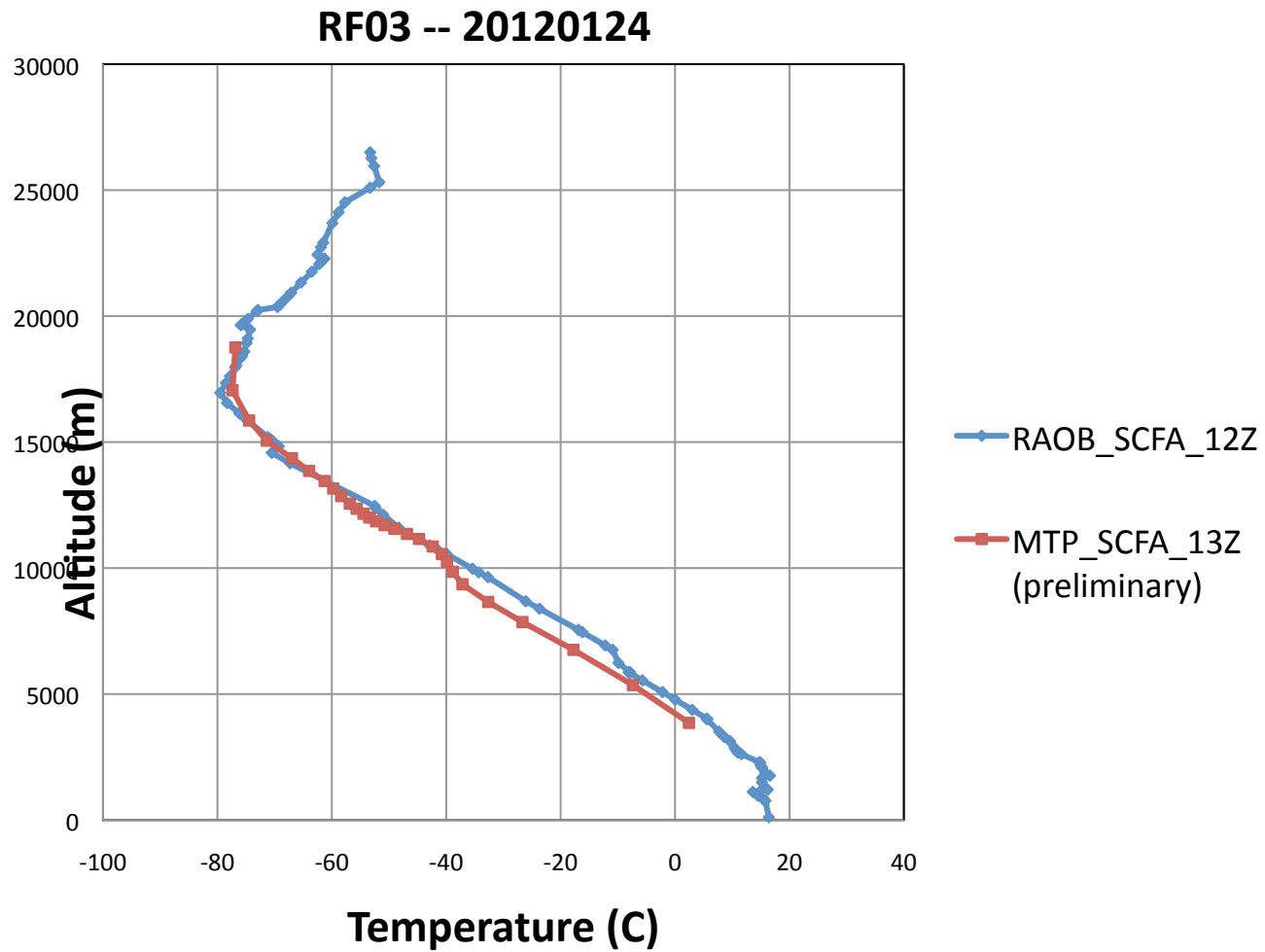
MTP vs. Santo Domingo Radiosonde





RF03: East-West flight track – tropopause height ~constant at 16-17 km
 Suggested double tropopause at ~1700 UTC
 Retrieval quality good until end of flight

MTP vs. Antofagasta Radiosonde



KT-19 Surface Temperature RF02

