

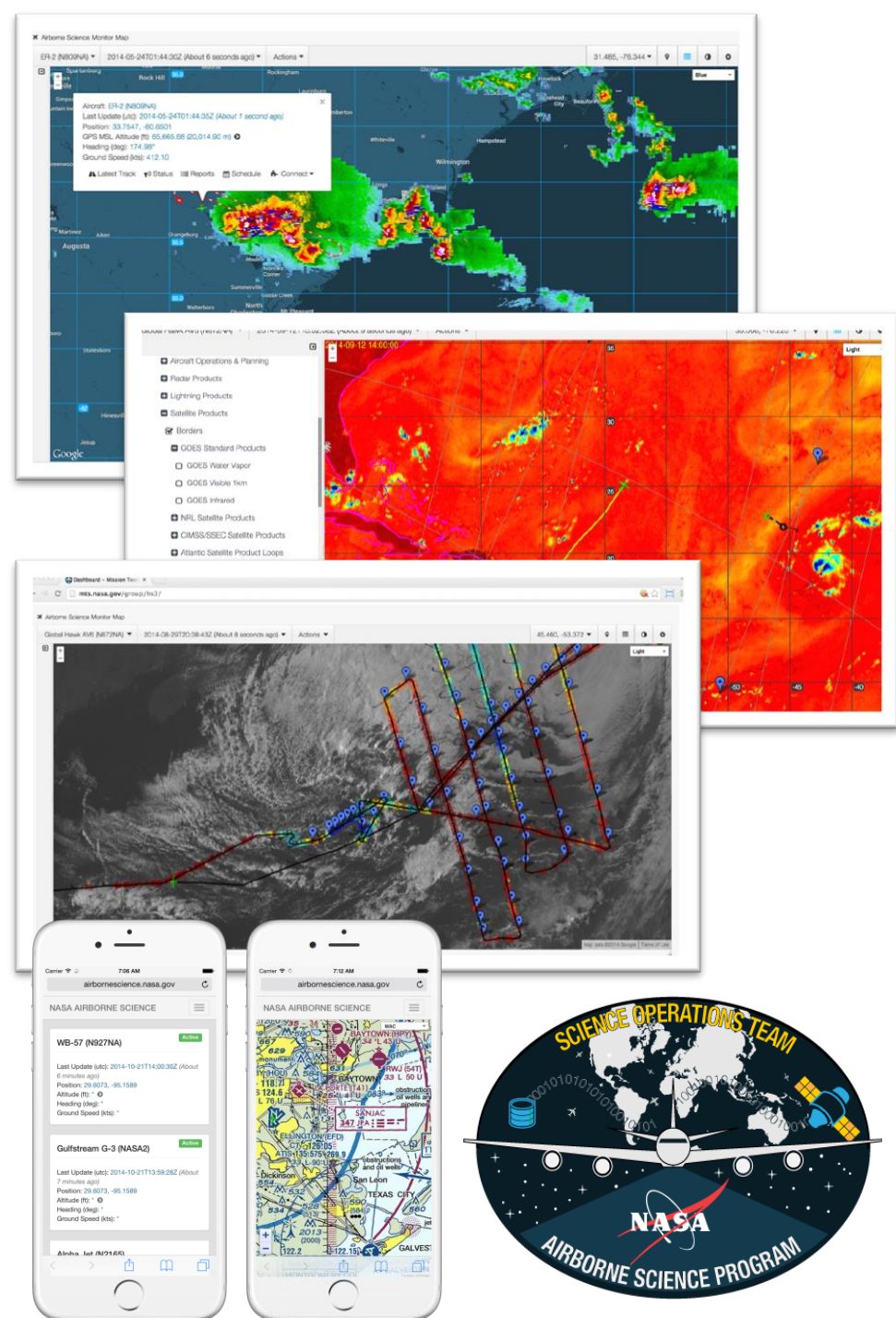
MISSION TOOLS SUITE (MTS)

Aaron Duley, NASA Ames Research Center, Airborne Science Program,
Moffett Field, CA

Mission Tools Suite (MTS)

MTS Supports:

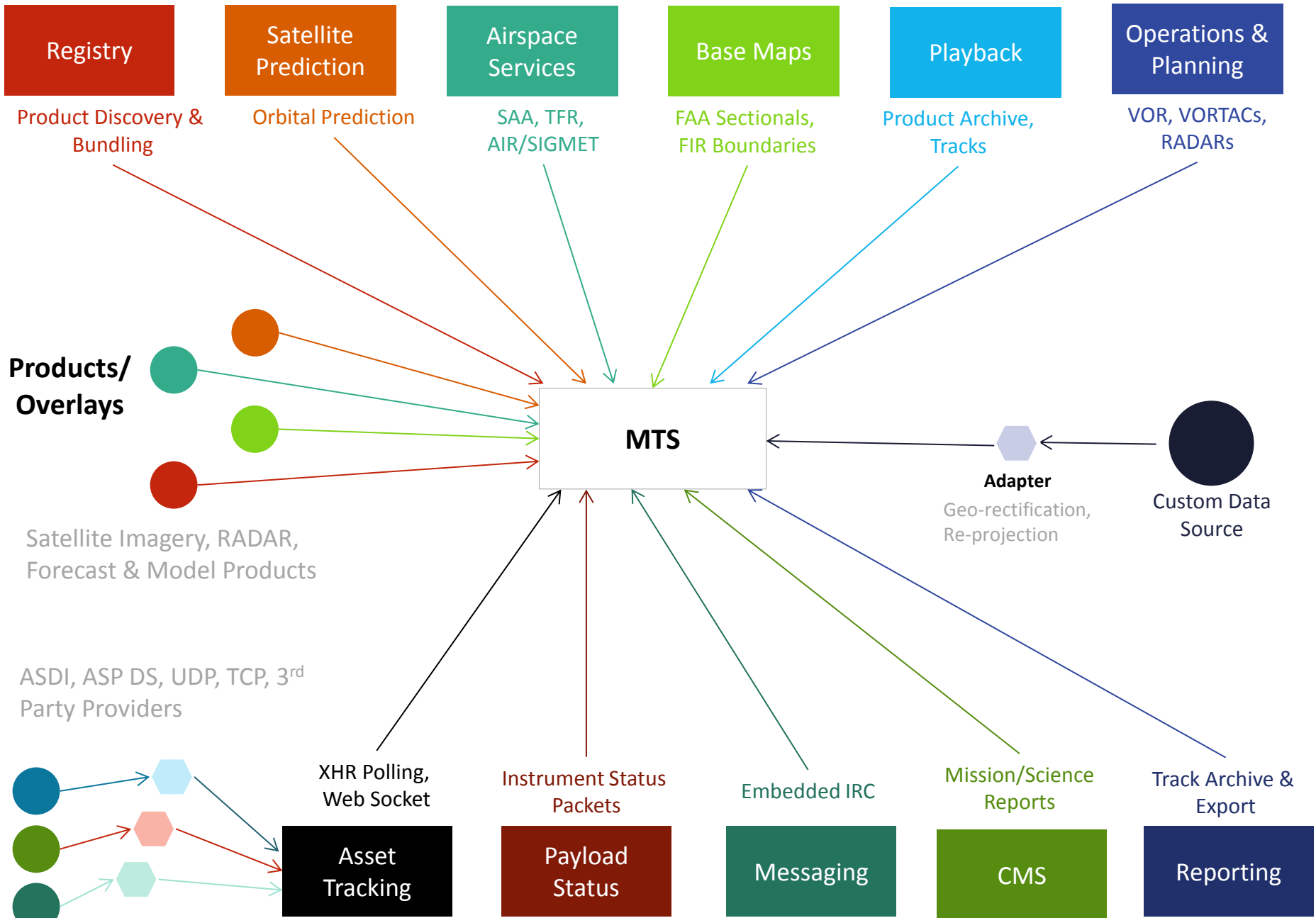
- Tactical decision-making and distributed team situational awareness during a flight
- Real time position and instrument status visualization for single and multi-asset campaigns
- Access to low latency satellite, radar, and other meteorological and mission products
- Communication and collaboration tools including a full CMS and turn-key chat solutions
- Robust support for Education and Public Outreach participation



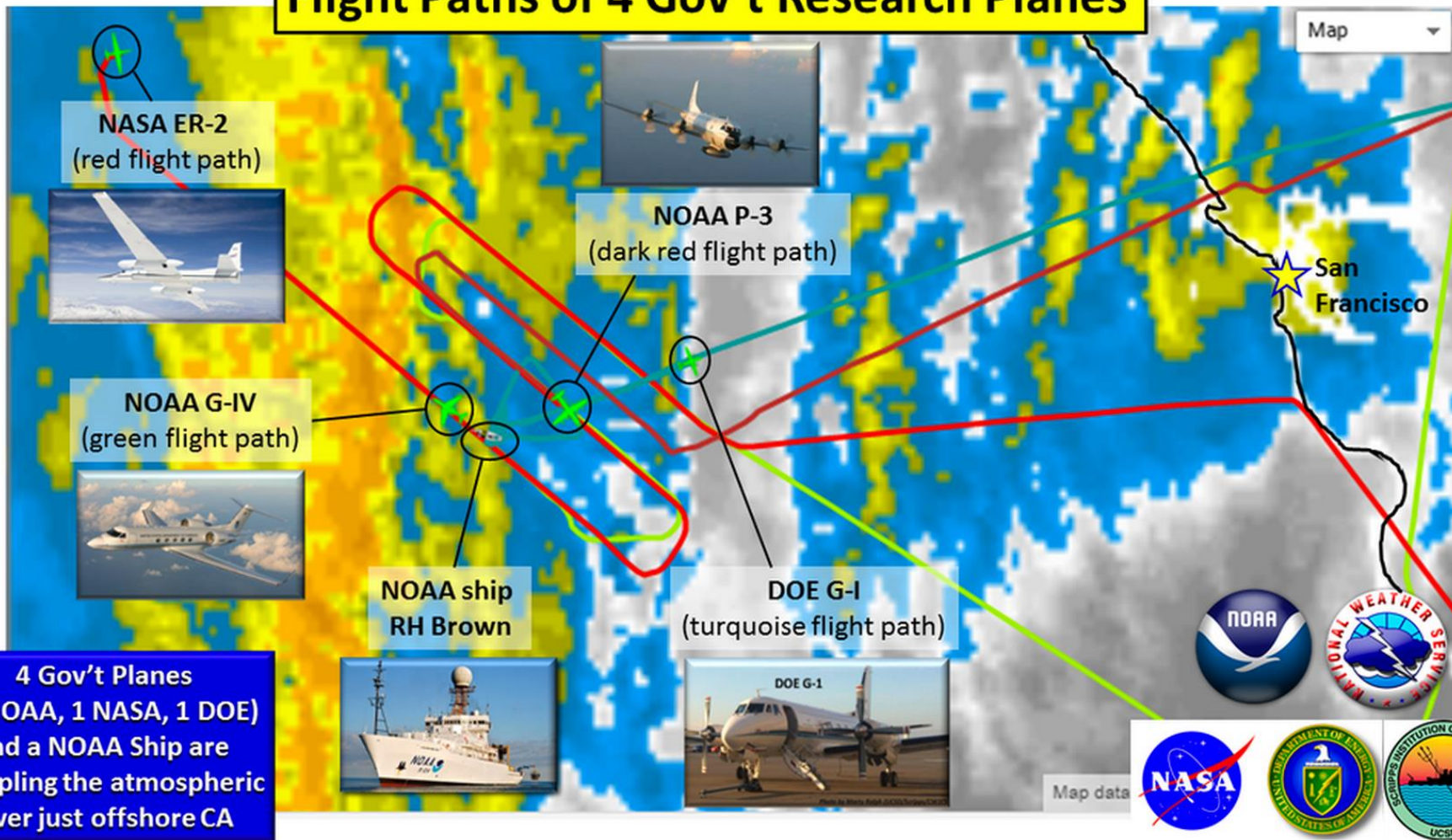
Project Lead: Aaron R. Duley, Ph.D.

Ames Research Center, Moffett Field, CA

For more information visit: <http://mts.nasa.gov>



Flight Paths of 4 Gov't Research Planes



4 Gov't Planes
(2 NOAA, 1 NASA, 1 DOE)
and a NOAA Ship are
sampling the atmospheric
river just offshore CA



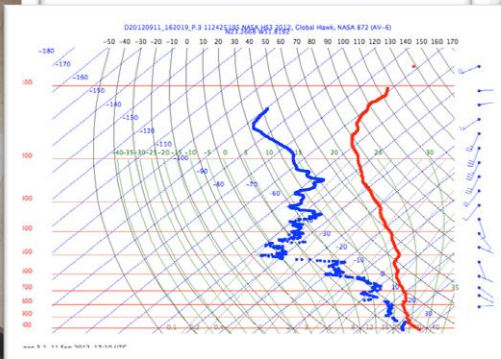
NWS Sacramento @NWSSacramento · 19h

Monumental day in wx research- 4 planes & a ship sampling #AtmosphericRiver in CA. @NOAA @NWS @NASA #CalWater2 #CaWx

↩ 35 ★ 20 ⋮



AVAPS



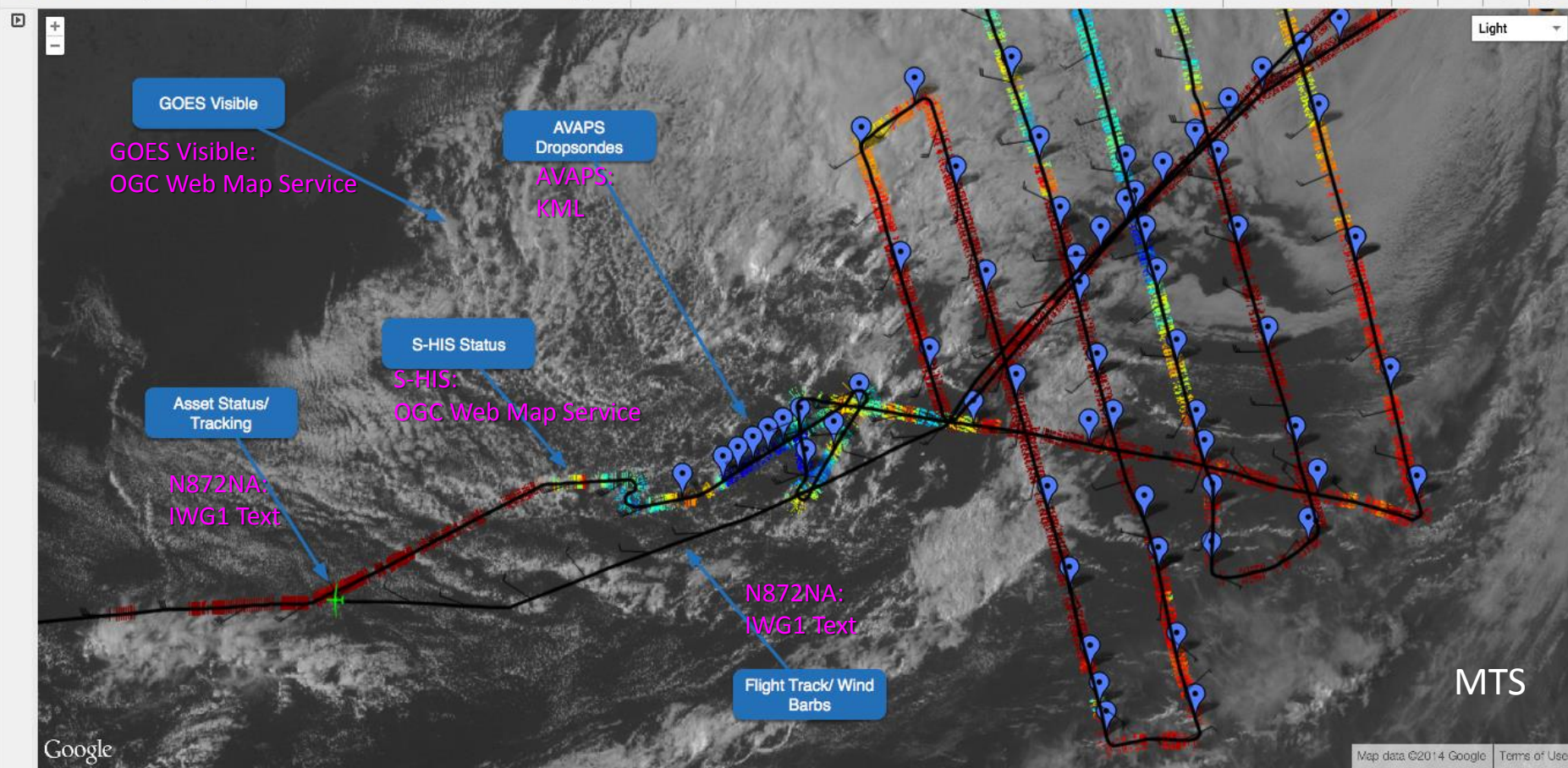
S-HIS

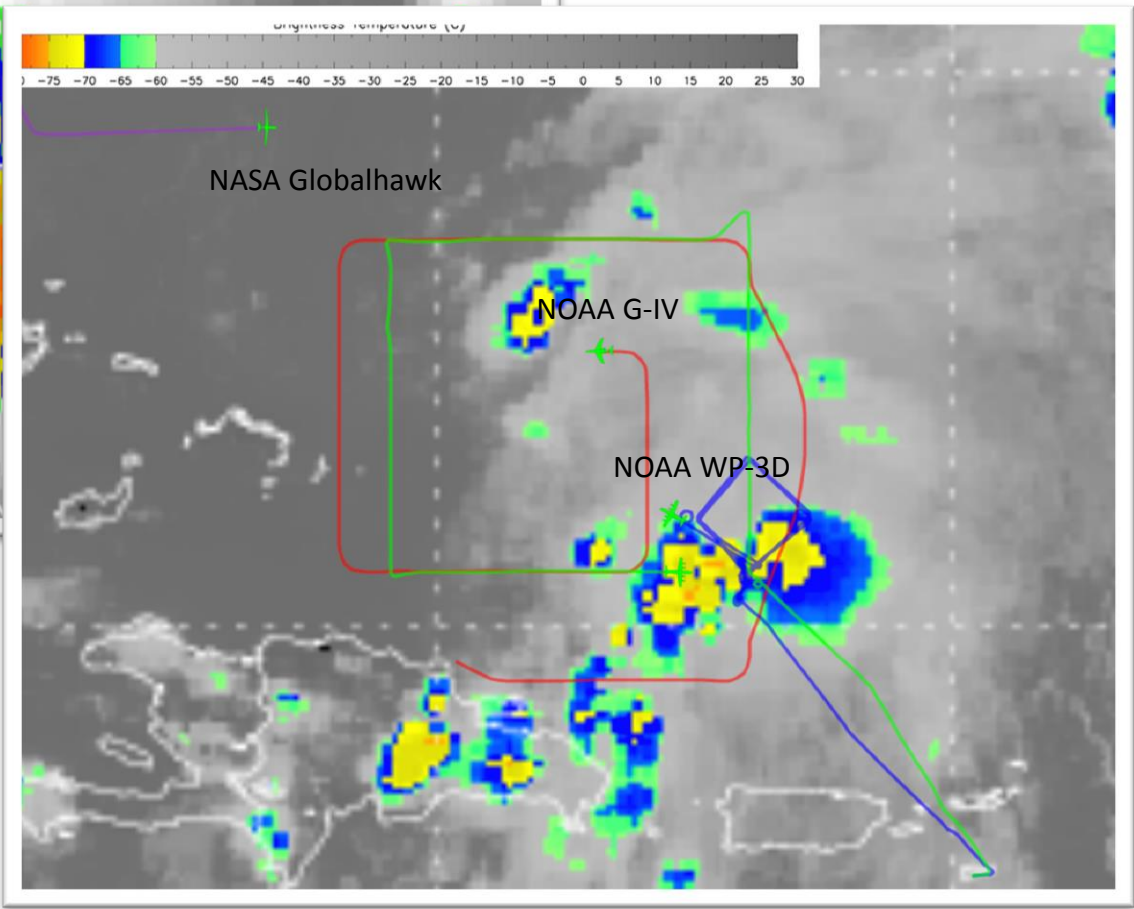
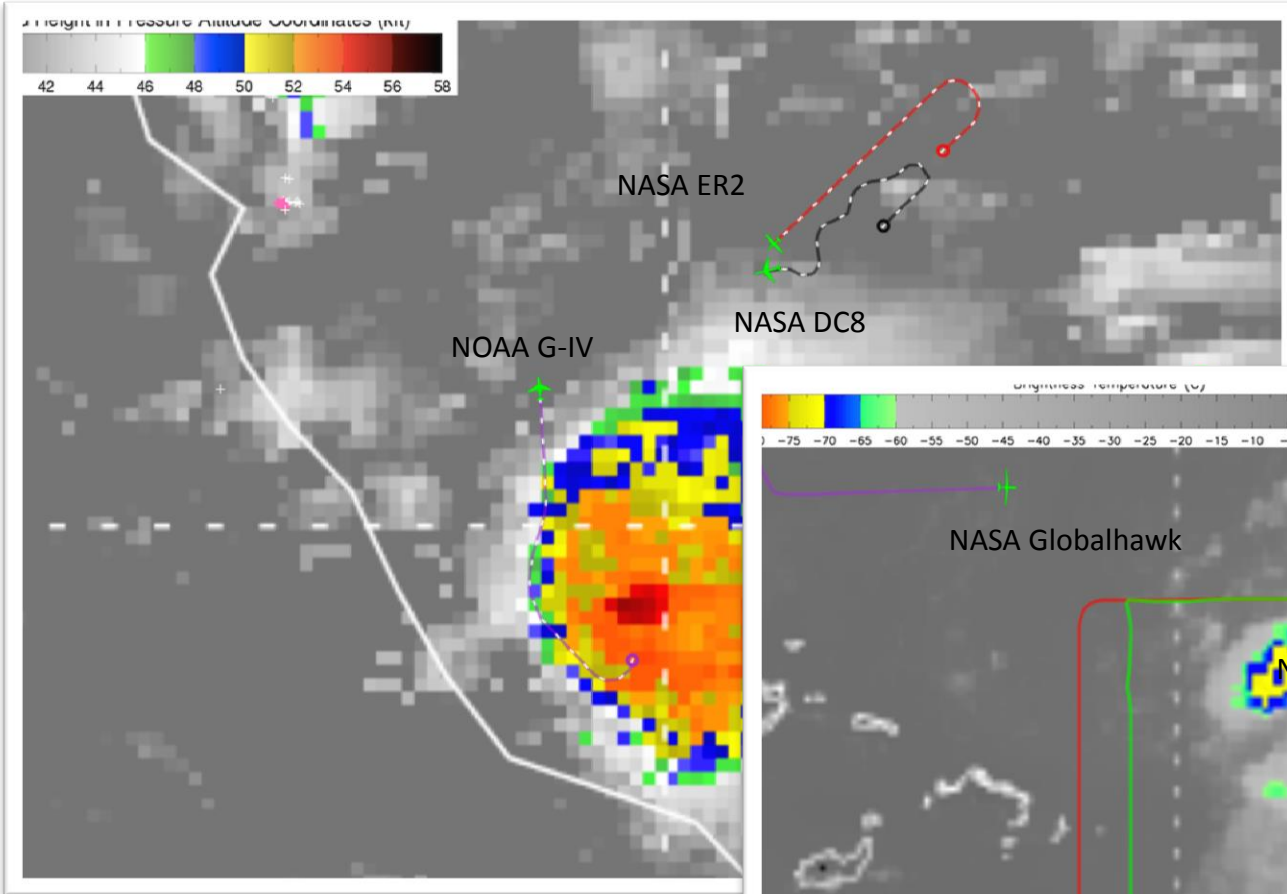
Global Hawk AV6 (N872NA) ▾

2014-08-29T20:38:43Z (About 8 seconds ago) ▾

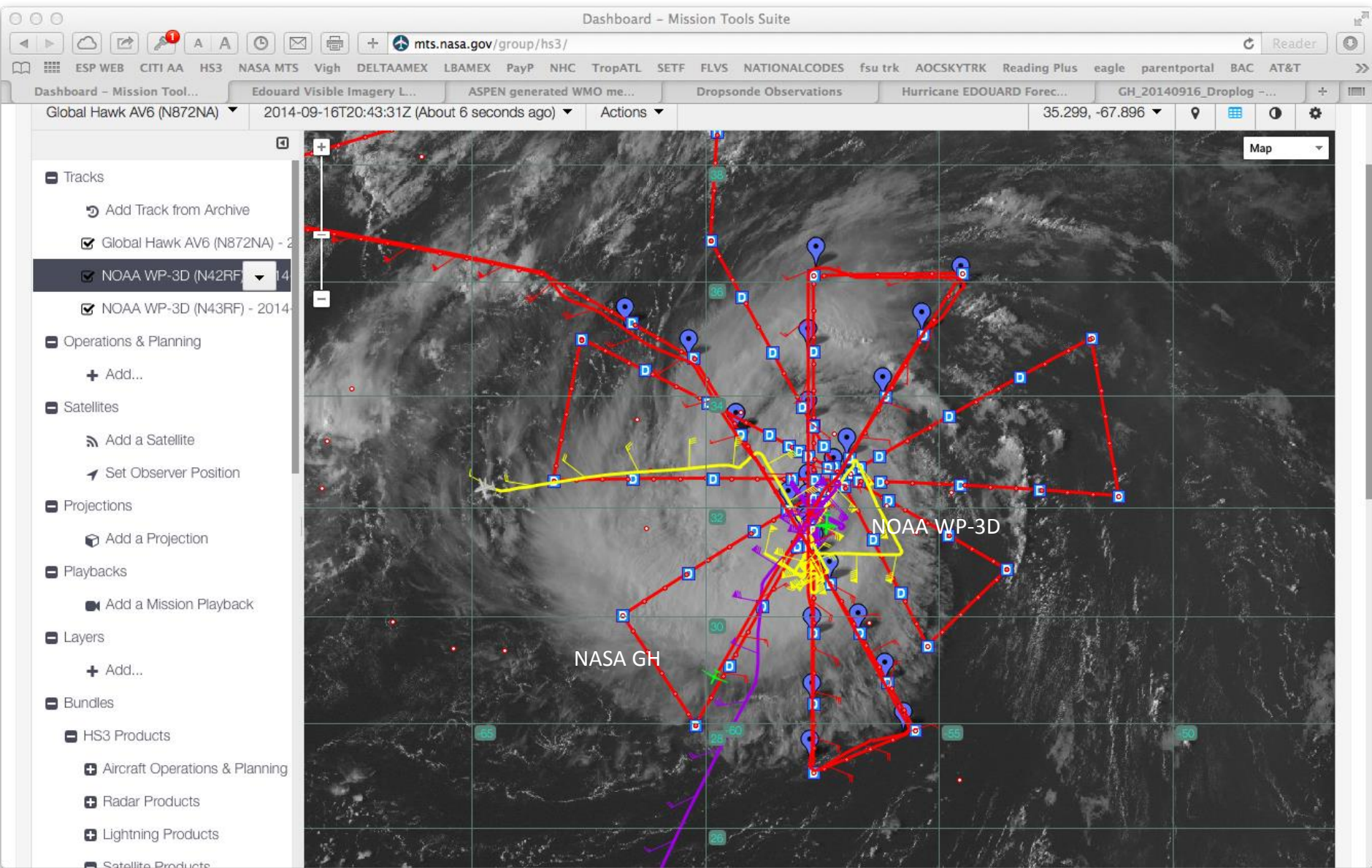
Actions ▾

45.460, -53.372 ▾



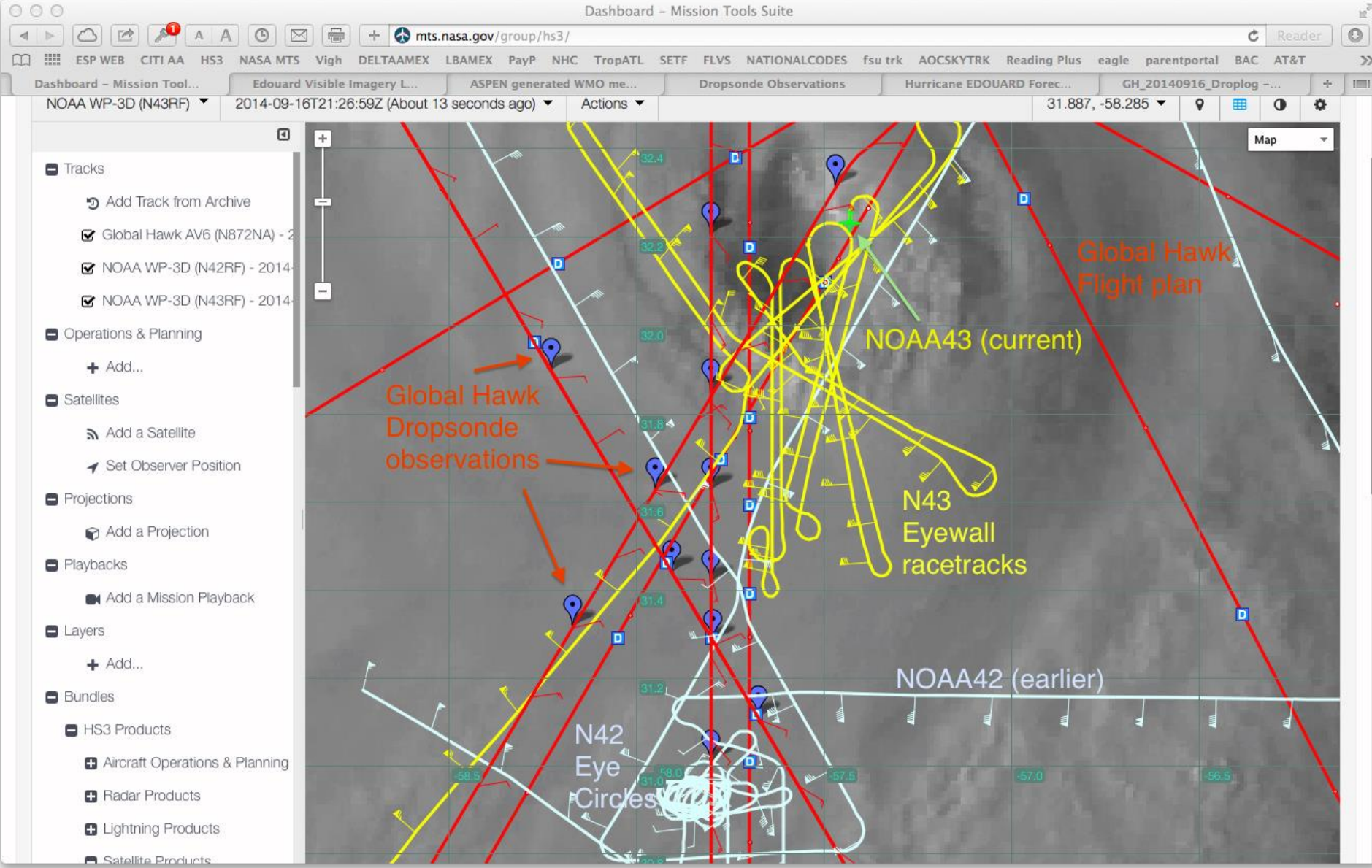


HS3, 2013; NASA GH, NOAA G-IV, WP-3D (N42, N43)



Michael Black (NOAA/AOML): MTS screen capture 9/16/2014 during NASA/NOAA joint operations over Hurricane Edouard.





Michael Black (NOAA/AOML): MTS screen capture 9/16/2014 during NASA/NOAA joint operations over Hurricane Edouard.





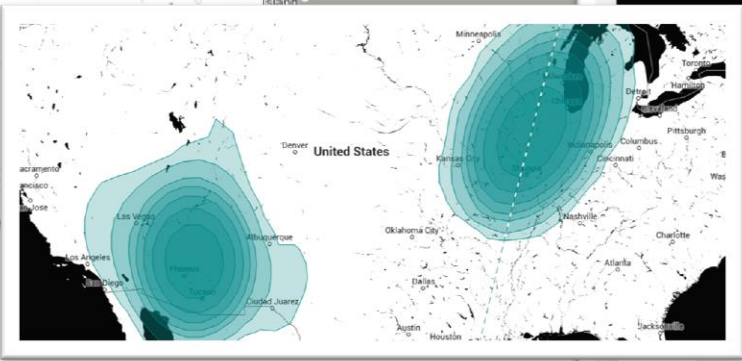
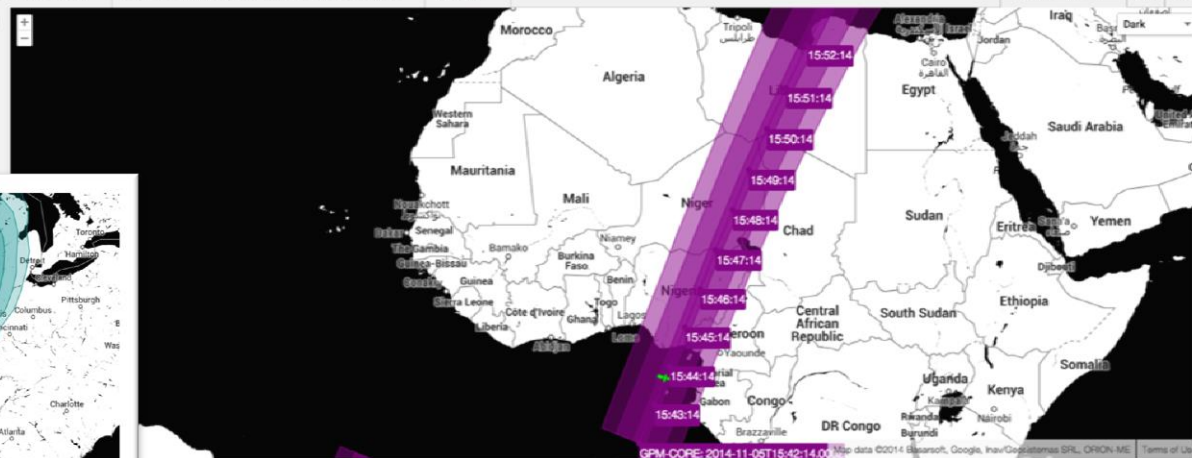
Airborne Science Monitor Map

ER-2 (N809NA) 2014-05-24T01:44:00Z (About 5 seconds ago) Actions 32.227, -75.108



Aircraft: ER-2 (N809NA)
 Last Update (utc): 2014-05-24T01:44:00Z (About 4 seconds ago)
 Position: 33.8209, -80.6504
 GPS MSL Altitude (ft): 65,737.53 (20,036.80 m)
 Heading (deg): 184.25°
 Ground Speed (kts): 405.10

DC-8 (N817NA) 2014-11-05T15:43:52Z (About 5 seconds ago) Actions -0.527, -7.471



GPM-CORE

Start: November 5, 2014 Passes: 15 Refresh

<input type="checkbox"/> AOS	LOS	Elevation	Azimuth	Orbit
<input type="checkbox"/> Wed, 05 Nov 2014 15:37:54 GMT	Wed, 05 Nov 2014 15:47:51 GMT	28.575531	130.5362	3903
<input type="checkbox"/> Wed, 05 Nov 2014 17:14:47 GMT	Wed, 05 Nov 2014 17:20:32 GMT	3.593448	299.285421	3904
<input type="checkbox"/> Thu, 06 Nov 2014 03:11:35 GMT	Thu, 06 Nov 2014 03:20:40 GMT	15.211899	67.866708	3910

IPHEX, 2014: ER-2 NASA GPM ground validation field campaign: IPHEX-GVFC