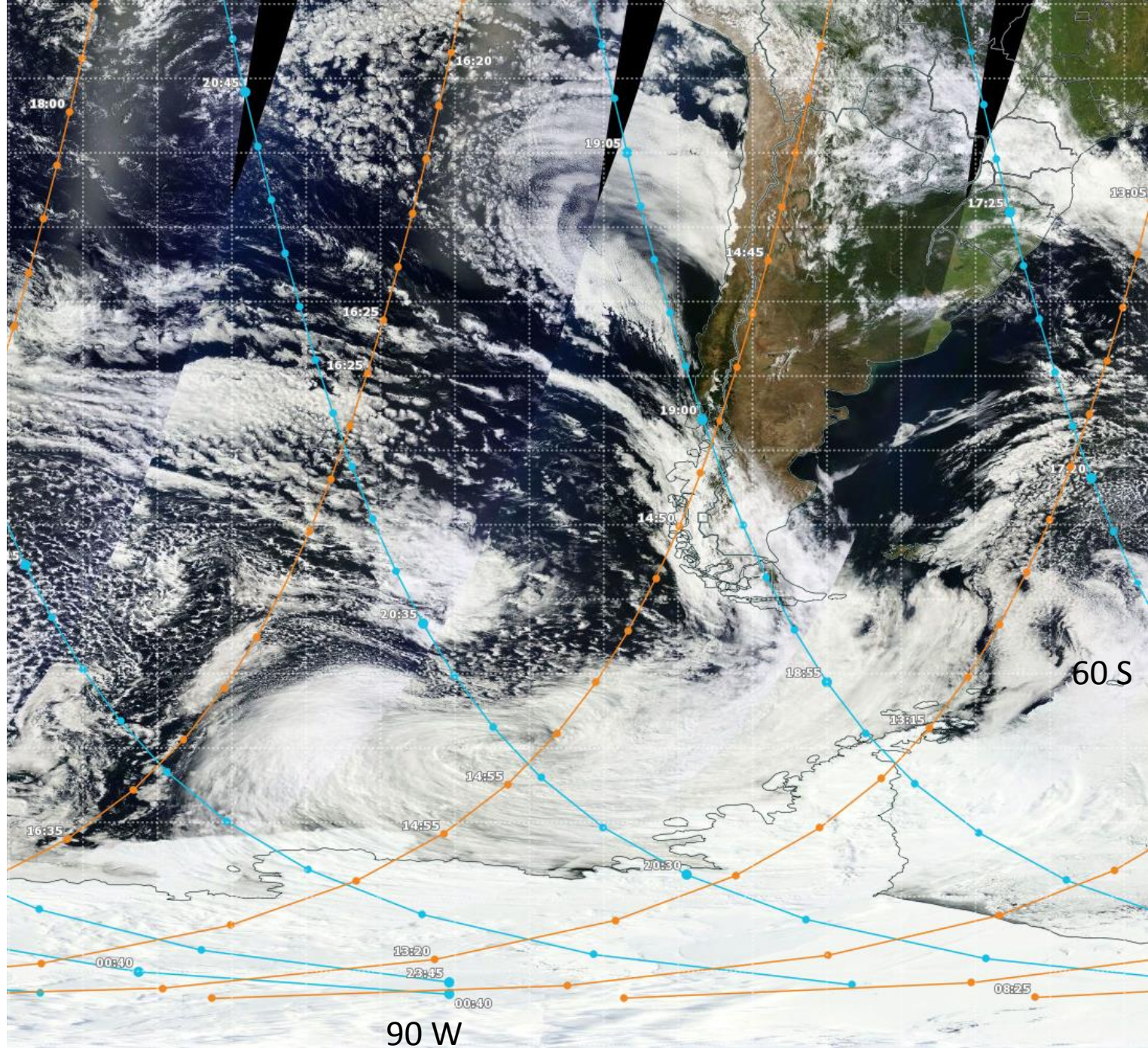


Verification

14 February Terra
composite.

The dry slot /
'clear' skies were
where they were
expected near
57S 80W.

Mostly clear skies
were over the AB
(except for some
sea fog).



14 February
Aqua composite.

The dry slot /
'clear' skies
progressed
eastward, (along
75W) with the
vort max clouds
moving in rapidly
from the west.

Mostly clear skies
continued over
the AB (the sea
fog appears to
dissipate during
the day).

