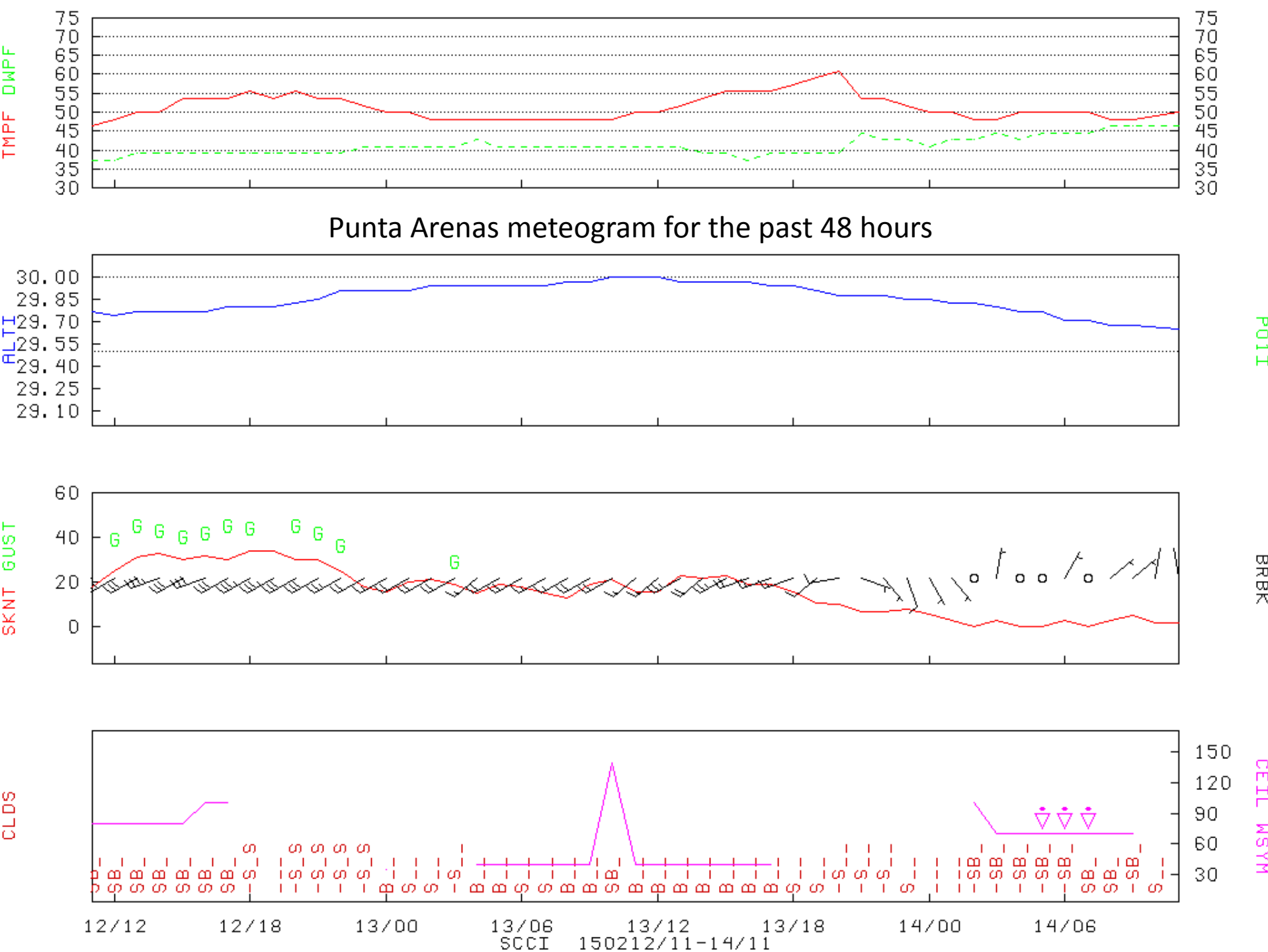


Weather Update

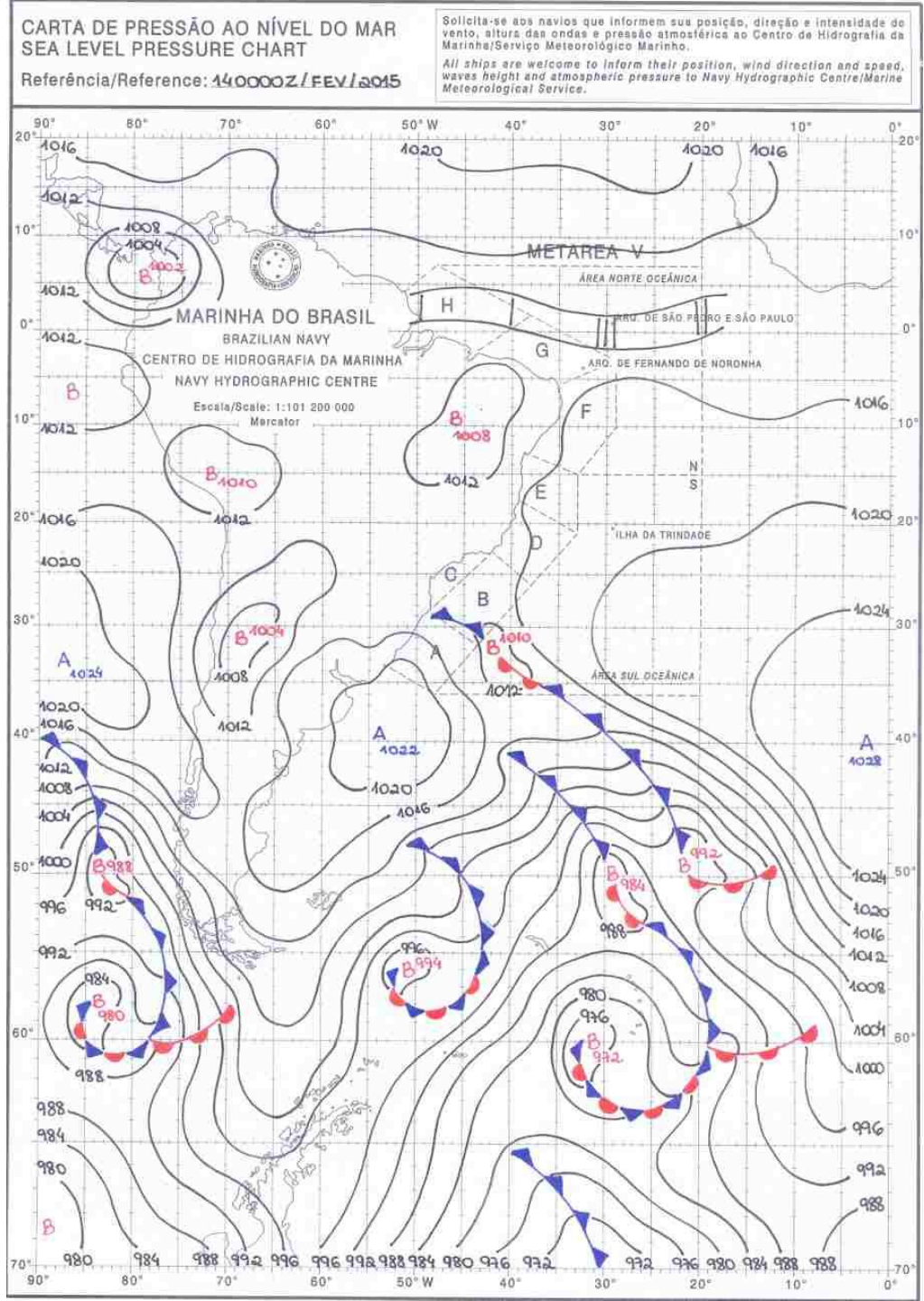
14 February 2015

Jim Bresch and Shawn Honomichl
ORCAS Forecast team

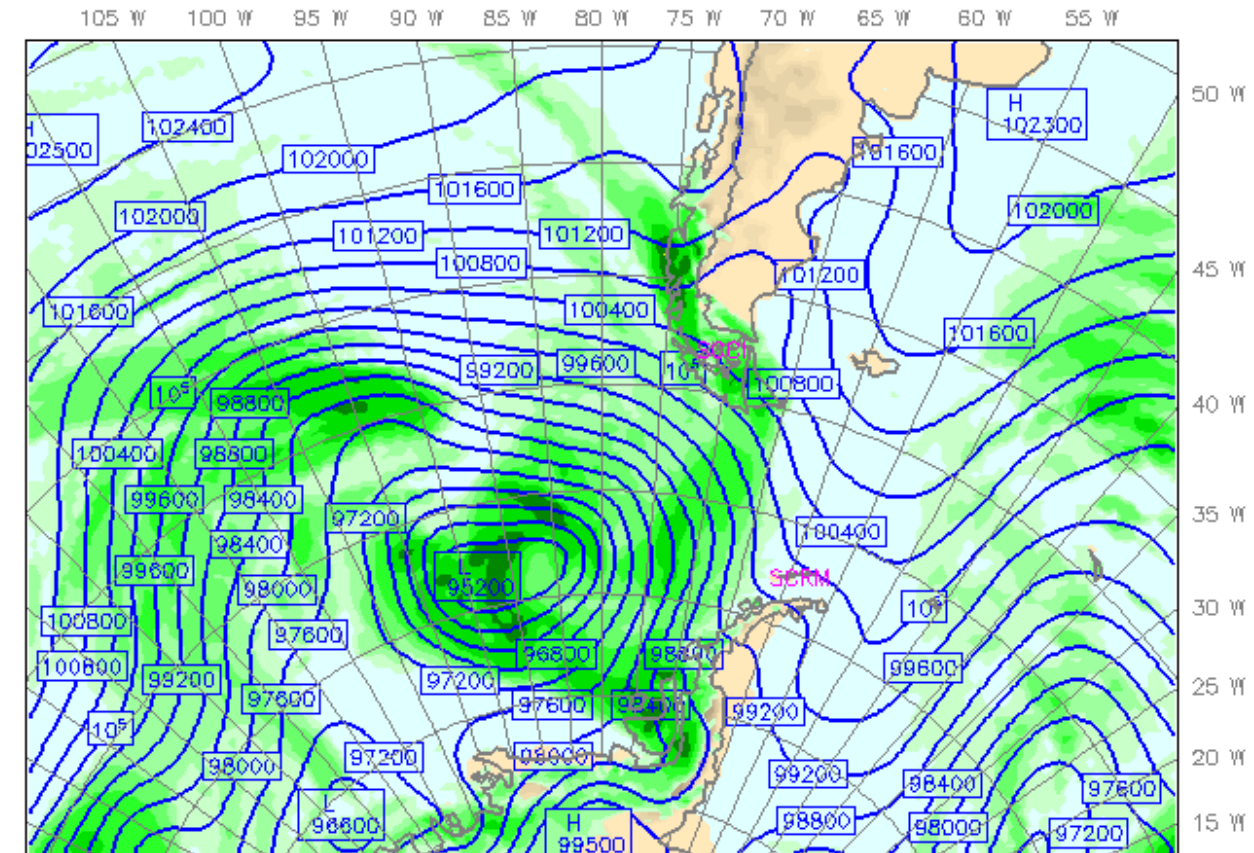
- Takeoff weather: Rain showers ended by 5 AM local, ceiling is lifting, winds are light.



9 PM CST surface analysis



Surface chart at
takeoff time. It's
nearly identical
to the 30-h
forecast
presented in
yesterday's
briefing.



NCEP GFS 0.25 degree
Fcst: 6 h
Low cloud fraction
Horizontal wind vectors

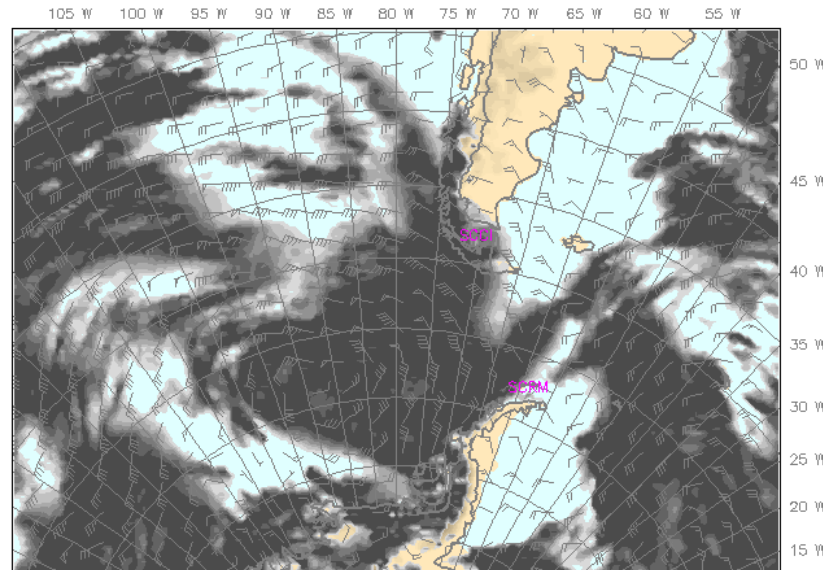
NCAR/MMM
Valid: 12 UTC Sat 14 Feb 15 (09 LST Sat 14 Feb 15)
at pressure = 900 hPa

Init: 06 UTC Sat 14 Feb 15
sm= 1

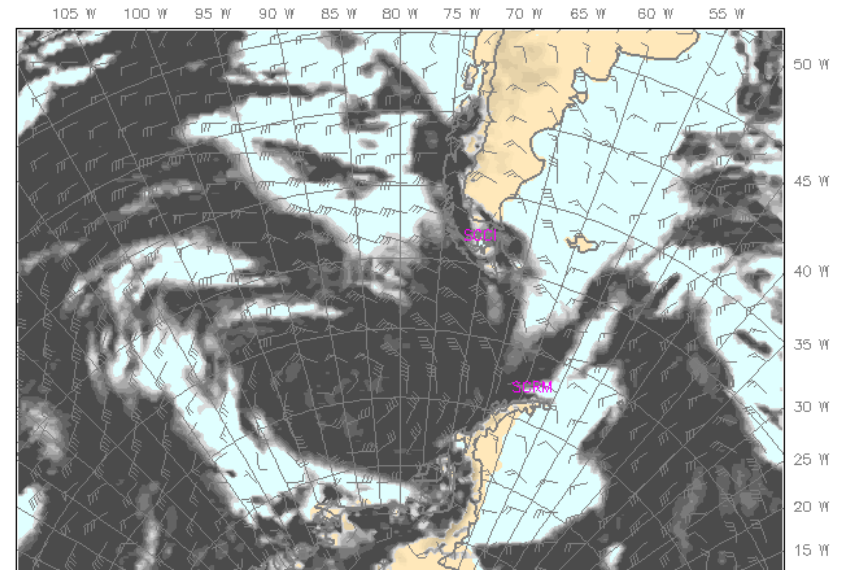
NCEP GFS 0.25 degree
Fcst: 9 h
Low cloud fraction
Horizontal wind vectors

NCAR/MMM
Valid: 15 UTC Sat 14 Feb 15 (12 LST Sat 14 Feb 15)
at pressure = 900 hPa

Init: 06 UTC Sat 14 Feb 15
sm= 1



BARB VECTORS: FULL BARB = 10 kts
10 20 30 40 50 60 70 80 90 100
OUTPUT FROM METGRID V3.7 x = 180, y = 128, 30 km, 27 levels



BARB VECTORS: FULL BARB = 10 kts
10 20 30 40 50 60 70 80 90 100
OUTPUT FROM METGRID V3.7 x = 180, y = 128, 30 km, 27 levels

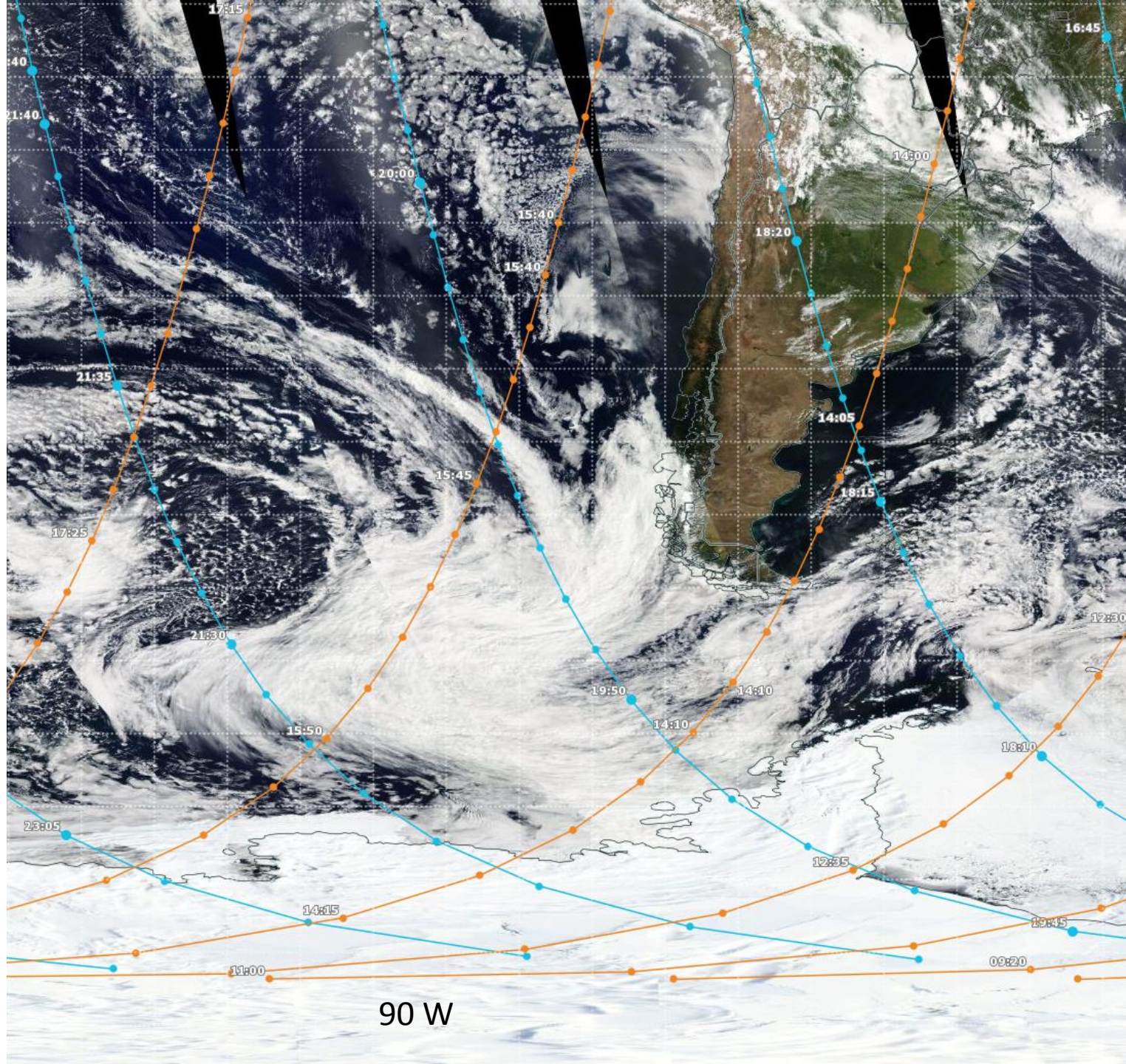
The GFS low-cloud fraction is similar to yesterday's forecast, but has slightly more cloud. The clear slot at 15z doesn't extend as far south (58S 80W) as forecast, but is wider in the W-E direction. The AB is clear.

Composite of
Aqua's afternoon
overpasses 13
February.

Clouds were
progressing as
expected.

60 S

90 W

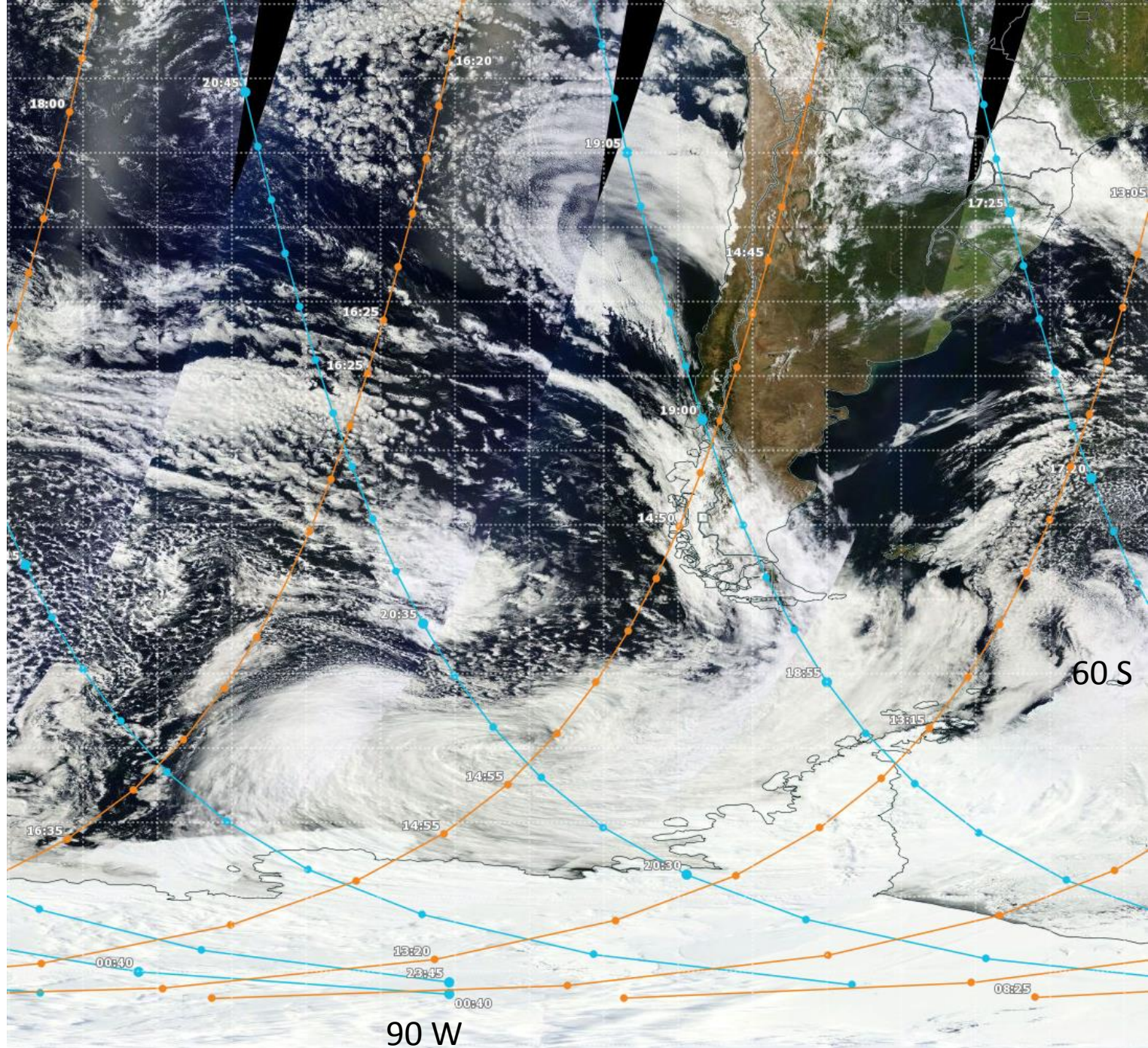


Verification

14 February Terra
composite.

The dry slot /
'clear' skies were
where they were
expected near
57S 80W.

Mostly clear skies
were over the AB
(except for some
sea fog).



14 February
Aqua composite.

The dry slot /
'clear' skies
progressed
eastward, (along
75W) with the
vort max clouds
moving in rapidly
from the west.

Mostly clear skies
continued over
the AB (the sea
fog appears to
dissipate during
the day).

