

DEEPWAVE Project Debriefing

EOL Project Management Office (PMO)
Support Summary

Jim Moore



Office/Storage
Bldg B52

Project
Parking

Gate 3

Hangar B46

NSF USAP/PAE Office

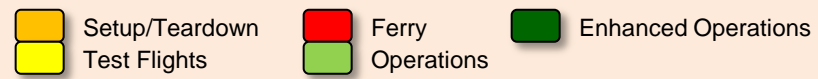
CHC
Airport
Apron

International
Antarctic Centre

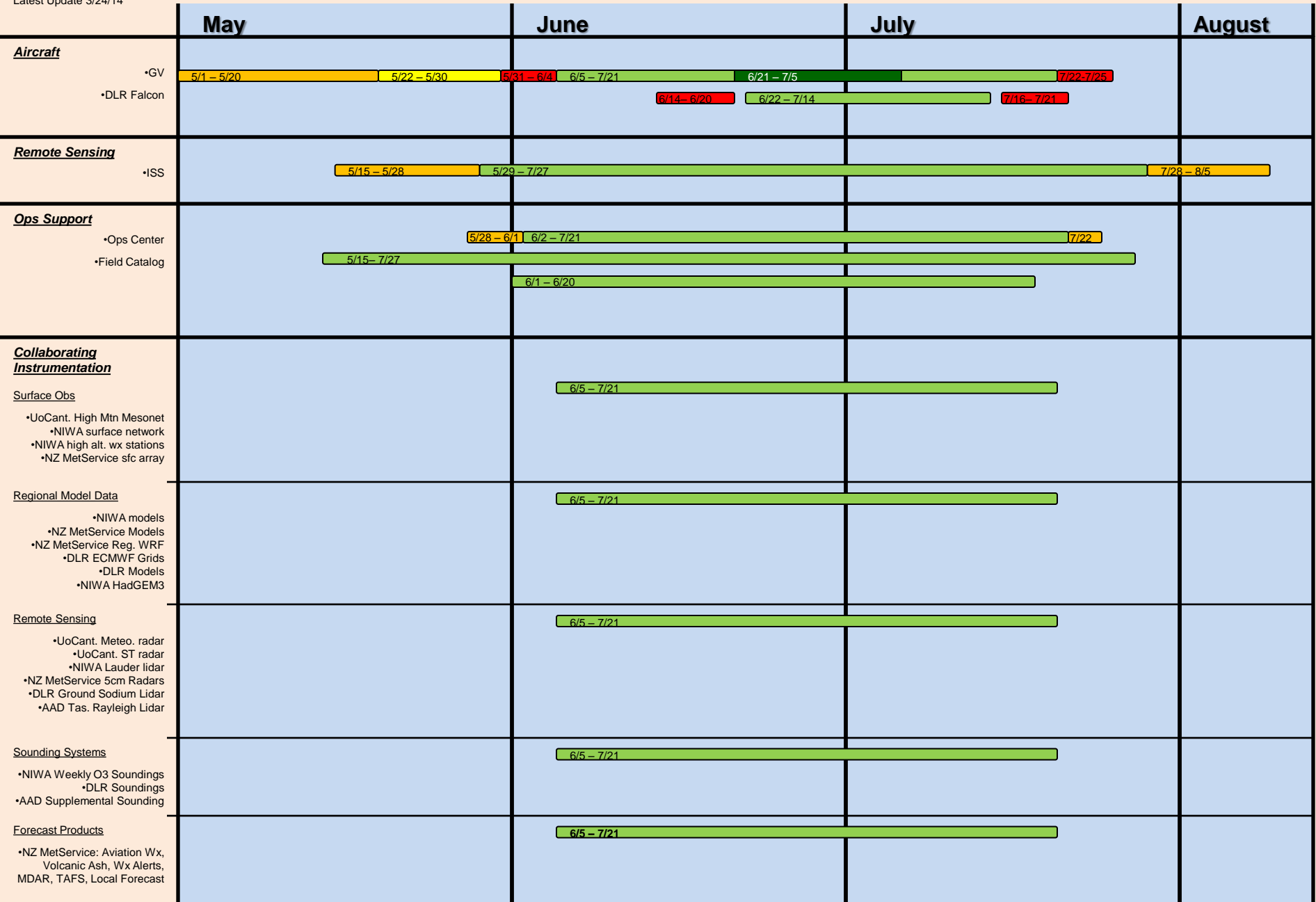
NSF USAP/PAE
Office

Antarctic Center
(Public)

DEEPWAVE Facility Operations Timeline (2014)



Latest Update 3/24/14



DEEPWAVE PMO Support Activities

- PI planning and support (calls, meetings, etc.) before deployment (over ~18 months)
- Project Dry Run in August 2013
- NZ Planning Meeting January 2014
- Site survey trips: Aug 2012, Jan 2014
- Complete participant information
- Project shipping guidelines
- Complete sections of the Operations Plan
- Coordination of Ops Plan Preparation and access via web site
- DEEPWAVE Web site updating

DEEPWAVE PMO Support Activities

- Project lodging options (via USAP contacts)
- Project forecast team coordination
- Print badges for all participants
- Arrangements at NSF Antarctic Center (Security guards, Internet services, shipping clearance and local delivery coordination)
- Assist with DLR arrangements for use of CHC USAP facilities
- Operations Planning Meeting in March 2014
- Operations support during deployment
- Site management for all participants
- Coordination of public open house

Lessons Learned

- Use of the USAP/PAE facilities for Southern Hemisphere deployments work well
- UCAR working with EOL to improve flexibility and clarity in shipping procedures, contractors
- Advanced planning for infrastructure, networking, ATC, regional data collection all important to success of the project
- International collaborations with DLR, NIWA, NZ MetService, Australian BOM was excellent