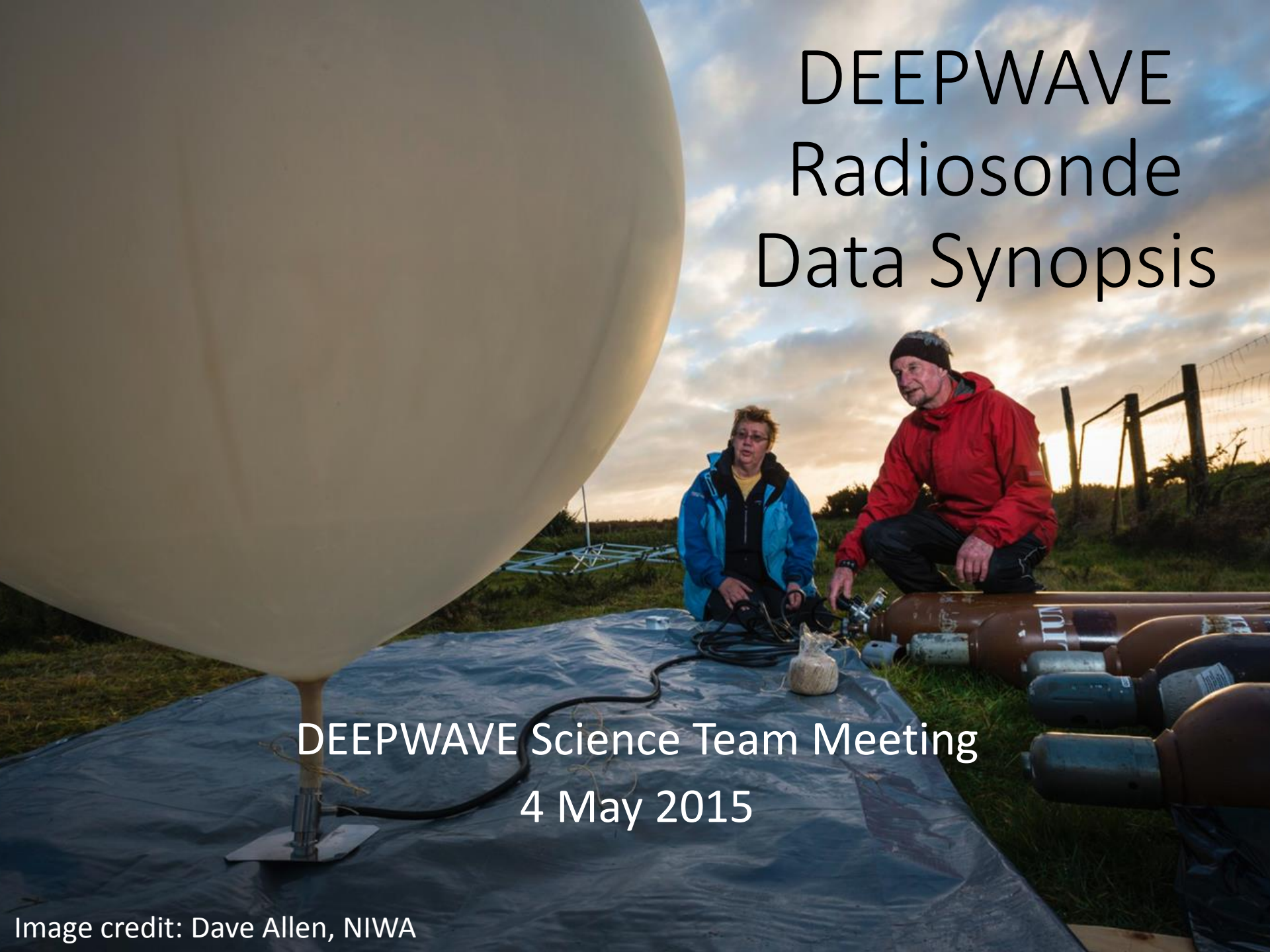


DEEPWAVE Radiosonde Data Synopsis

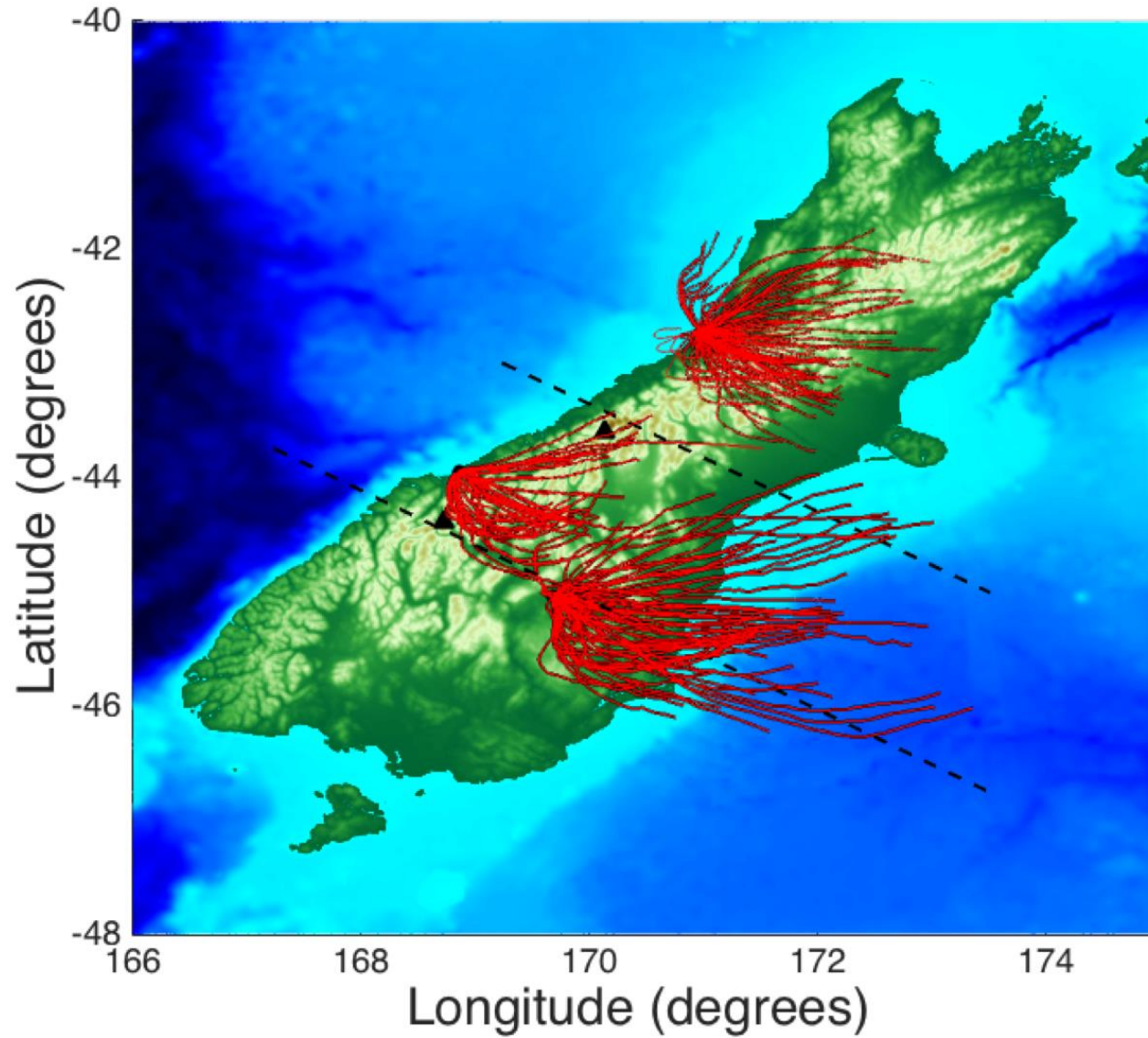


DEEPWAVE Science Team Meeting
4 May 2015

Overview

South Island Flights	Date	Haast	Hokitika	Lauder	Total
RF1	6/6	2	3	0	5
RF4	6/14	4	4	6	14
RF5	6/16	4	4	4	12
RF7	6/19	0	5	3	8
RF8	6/20	3	3	0	6
RF9	6/24	6	4	3	13
RF10	6/25	6	5	6	17
RF12	6/29	5	4	8	17
RF13	6/30	4	4	6	14
RF14	7/1	3	4	0	7
RF16	7/4	5	4	12	21
RF21	7/11	5	4	6	15
RF22	7/13	0	4	1	5
RF26	7/20	0	0	4	4
Location Totals		47	52	59	158

Overview

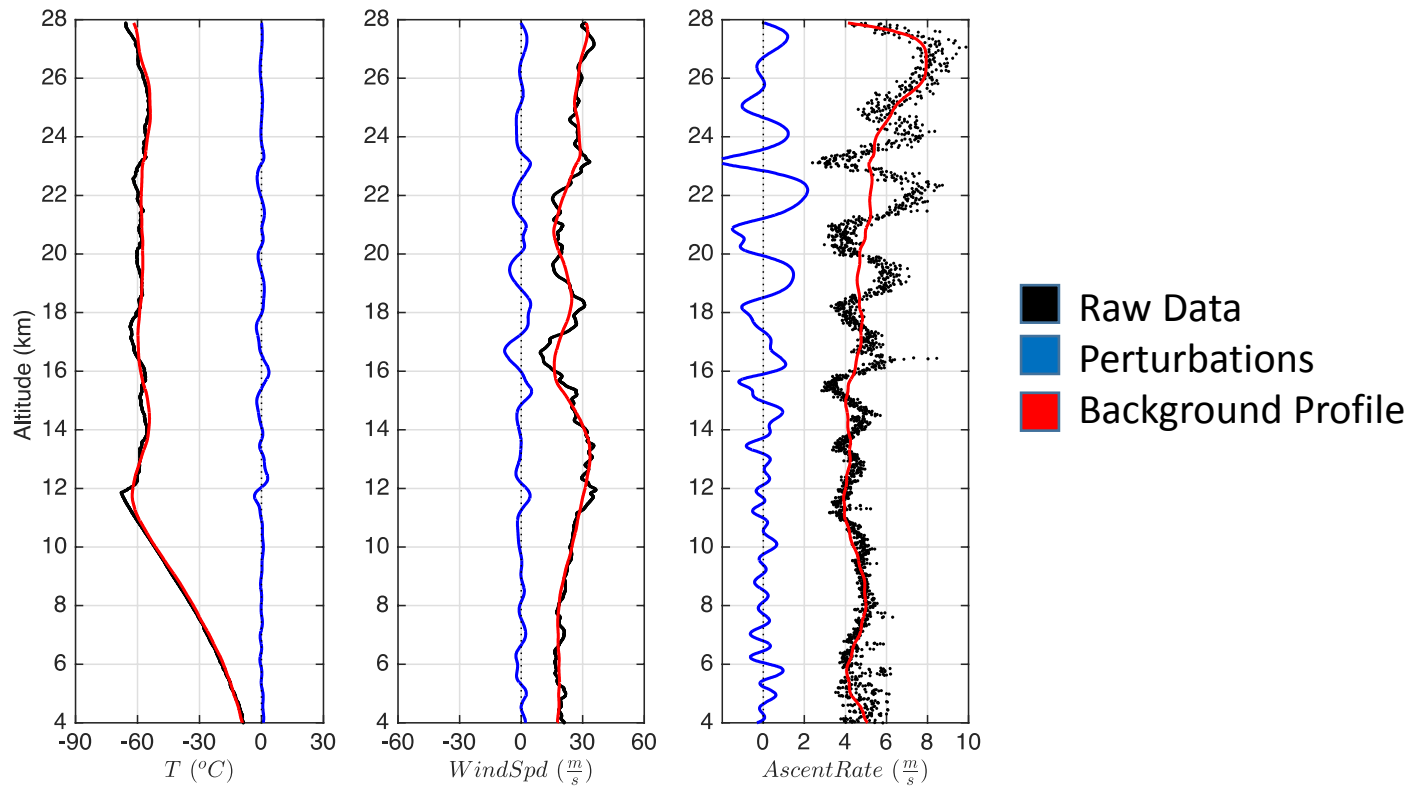


IOP Support Capabilities

- Temporal evolution of background wind and temperature profiles
- Identify regions of sustained vertical momentum flux

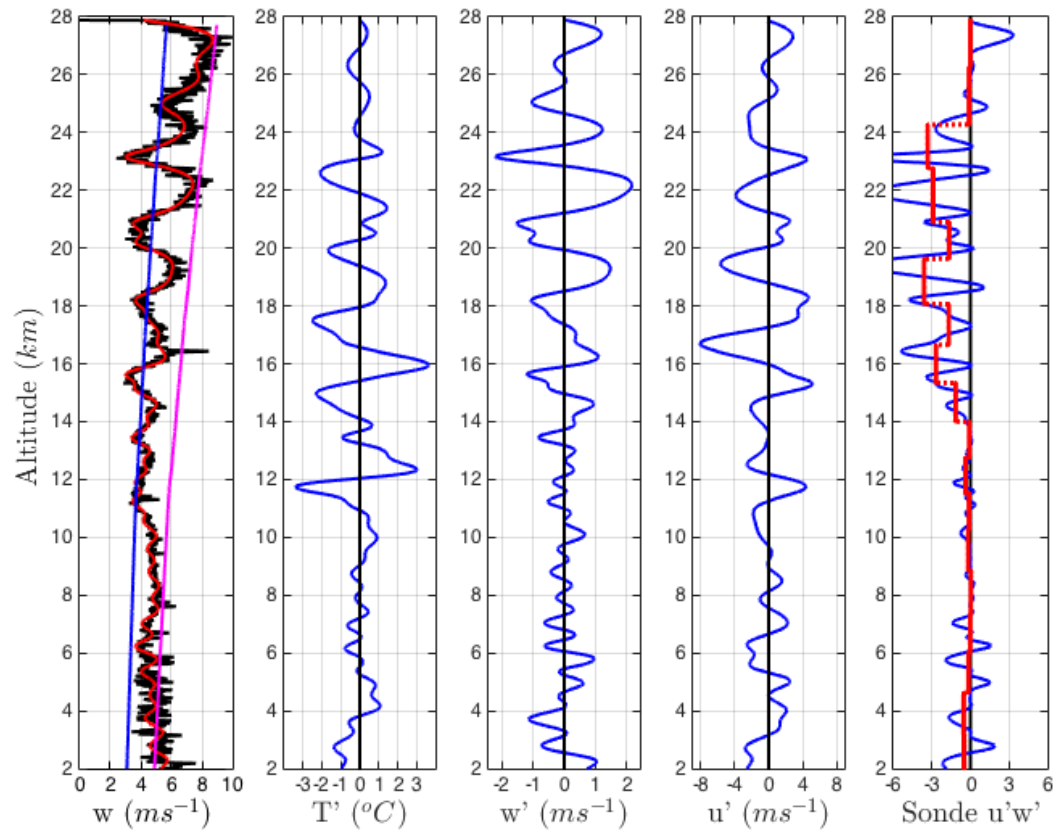
Identify fluctuations from background profile

Haast 6/12 Sounding at 12 UTC

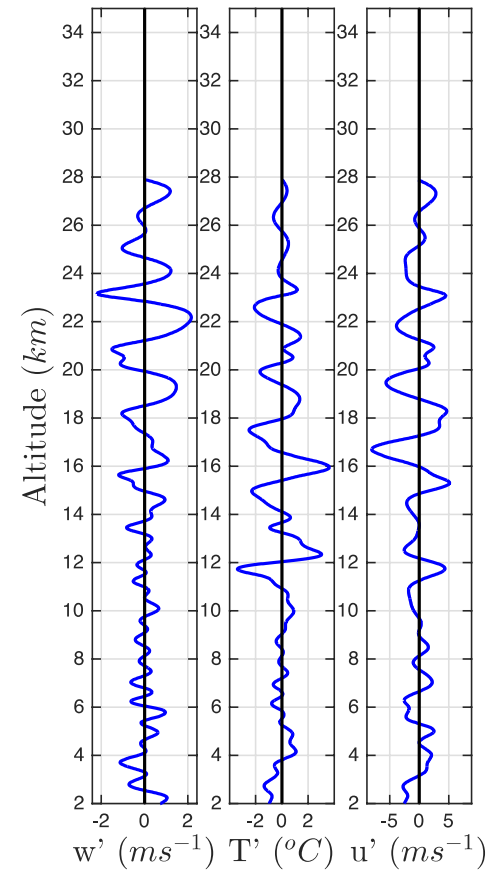
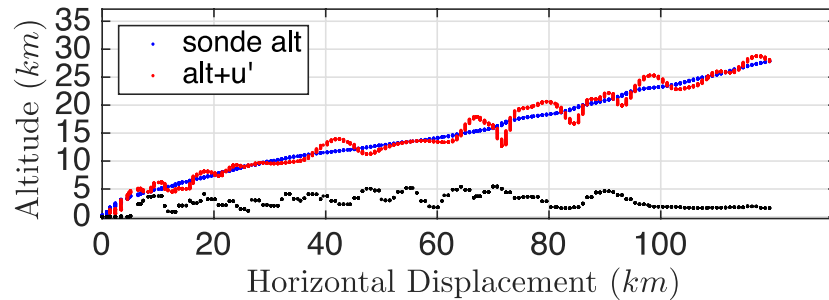
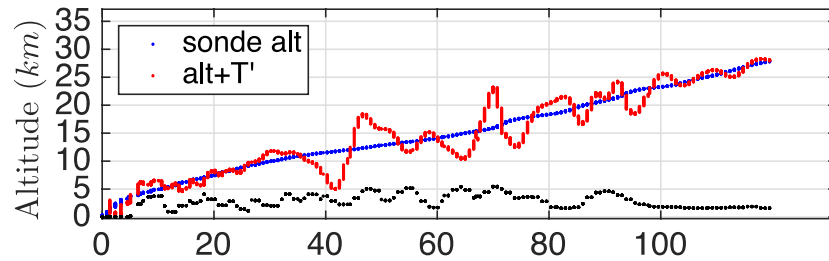
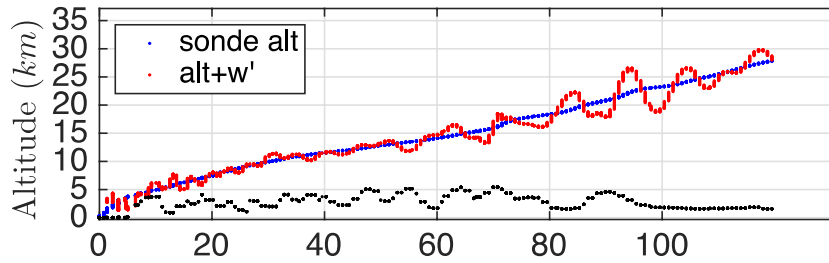


Identify regions of sustained $u'w'$ fluxes

Haast 6/12 Sounding at 12 UTC

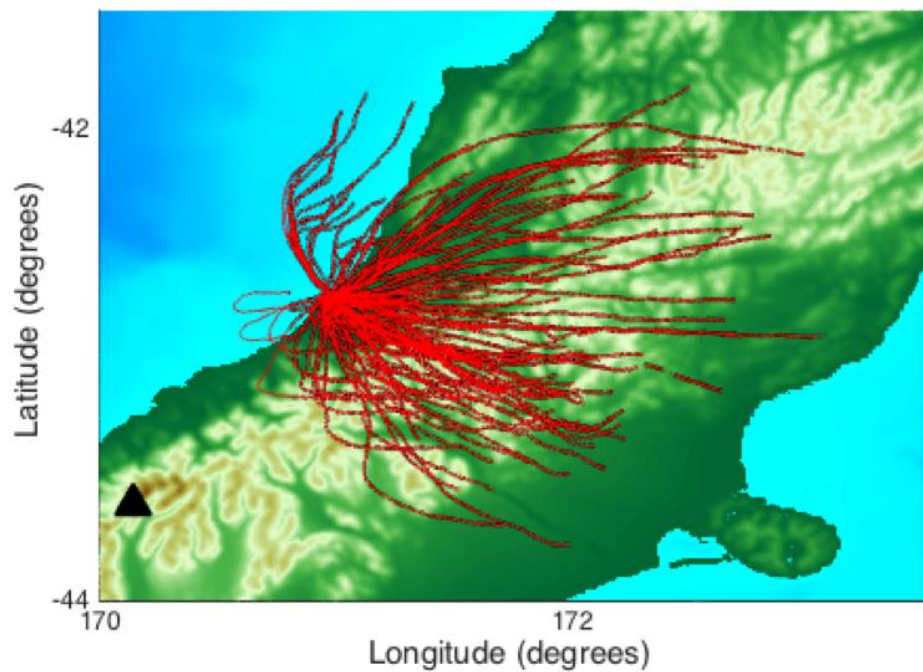


Contextualize wave oscillations with location and altitude

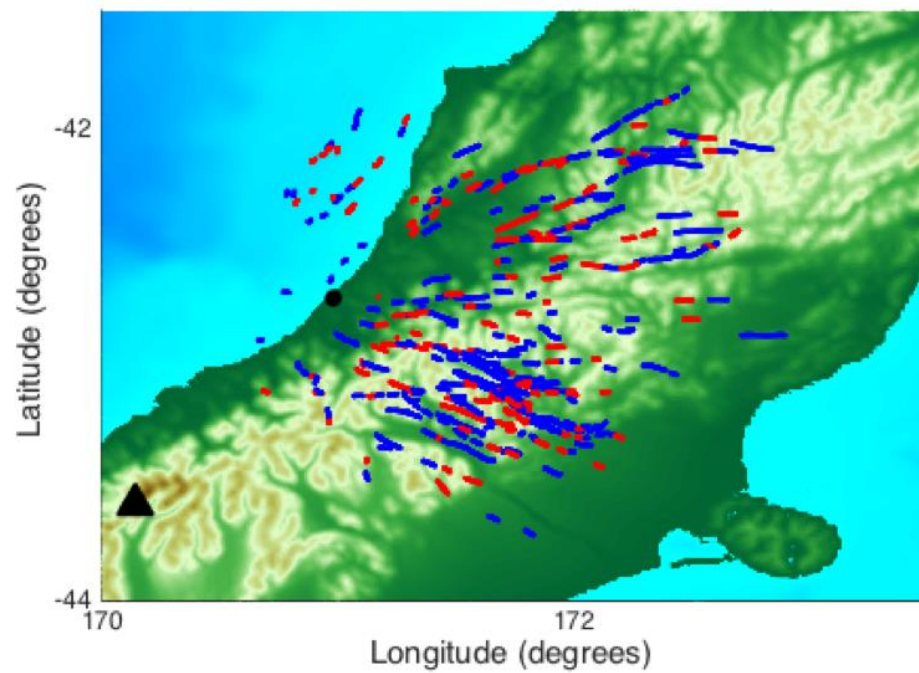


Hokitika

Sonde Trajectories

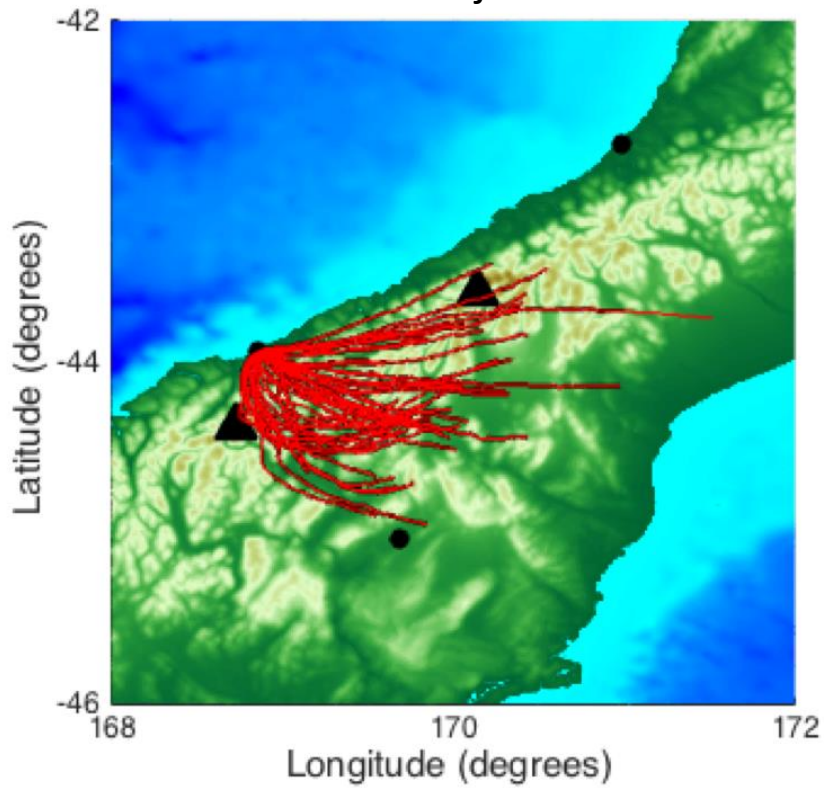


$u'w'$ (+/-)

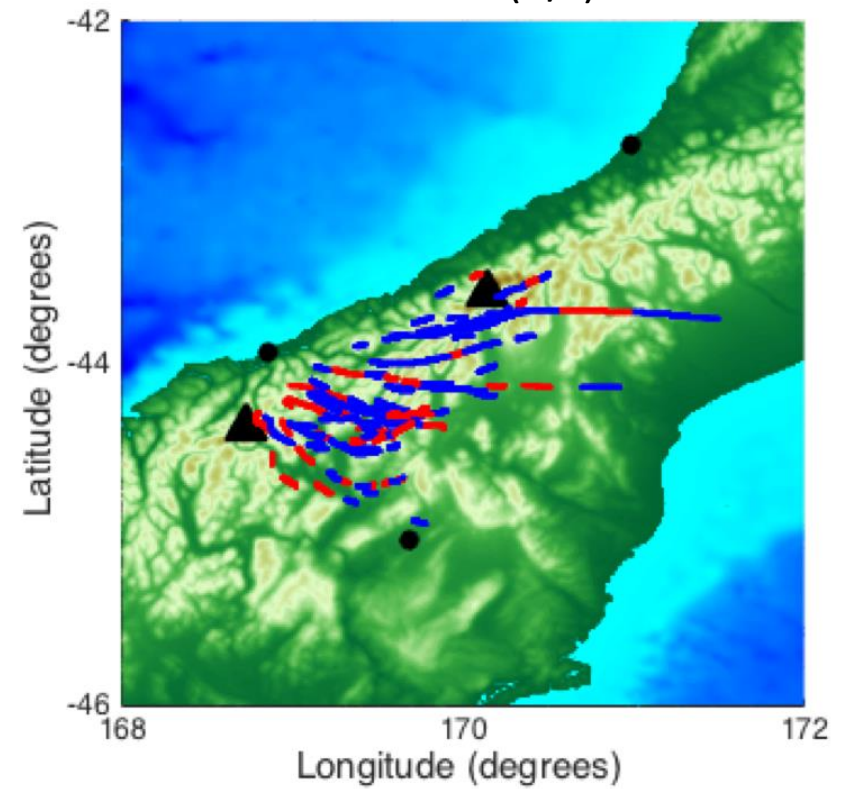


Haast

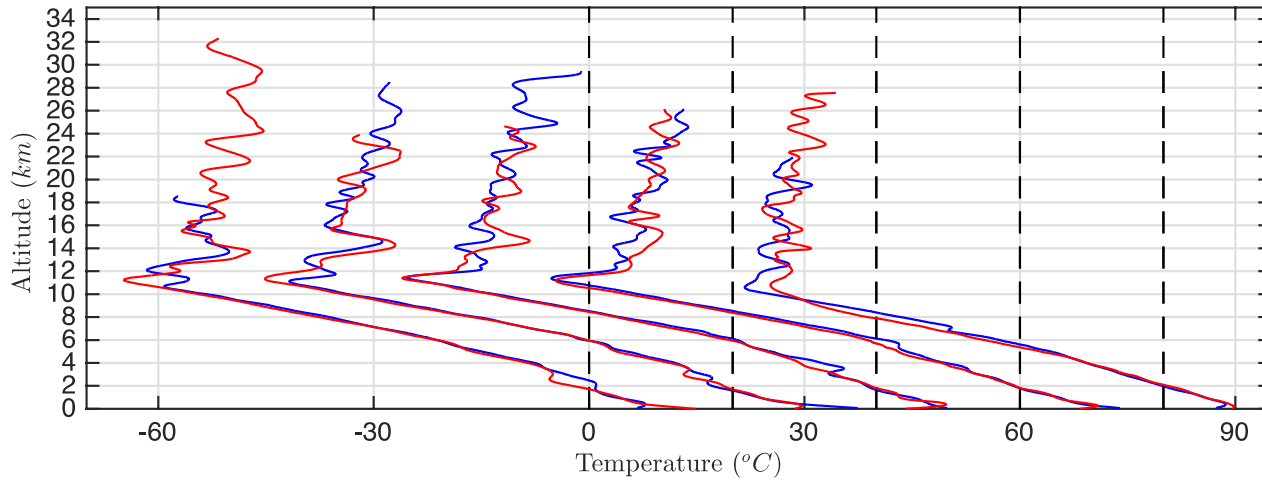
Sonde Trajectories



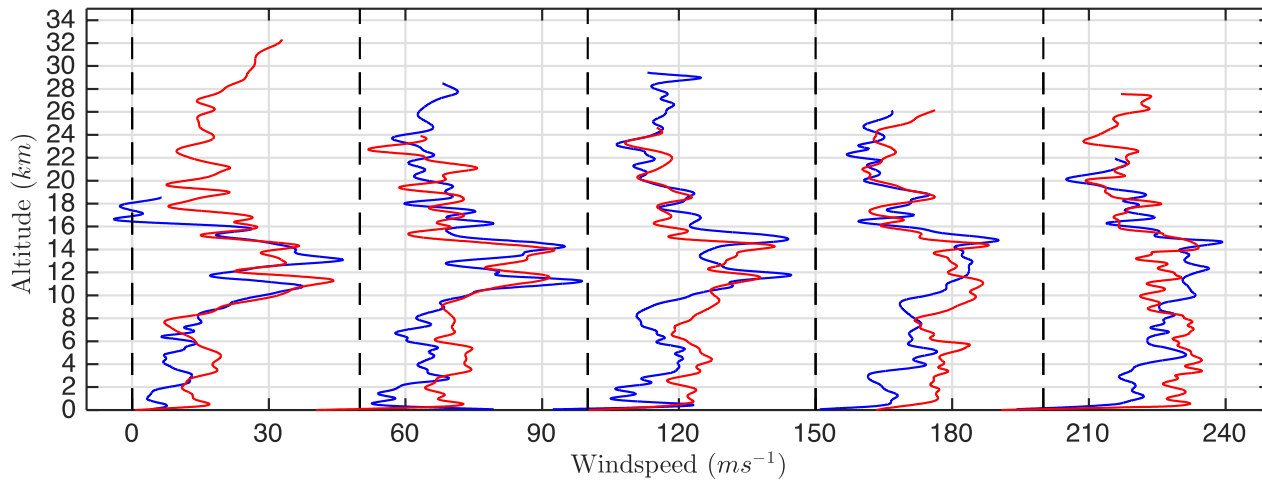
$u'w'$ (+/-)



RF12 – 0Z, 3Z, 6Z, 9Z, 12Z Soundings



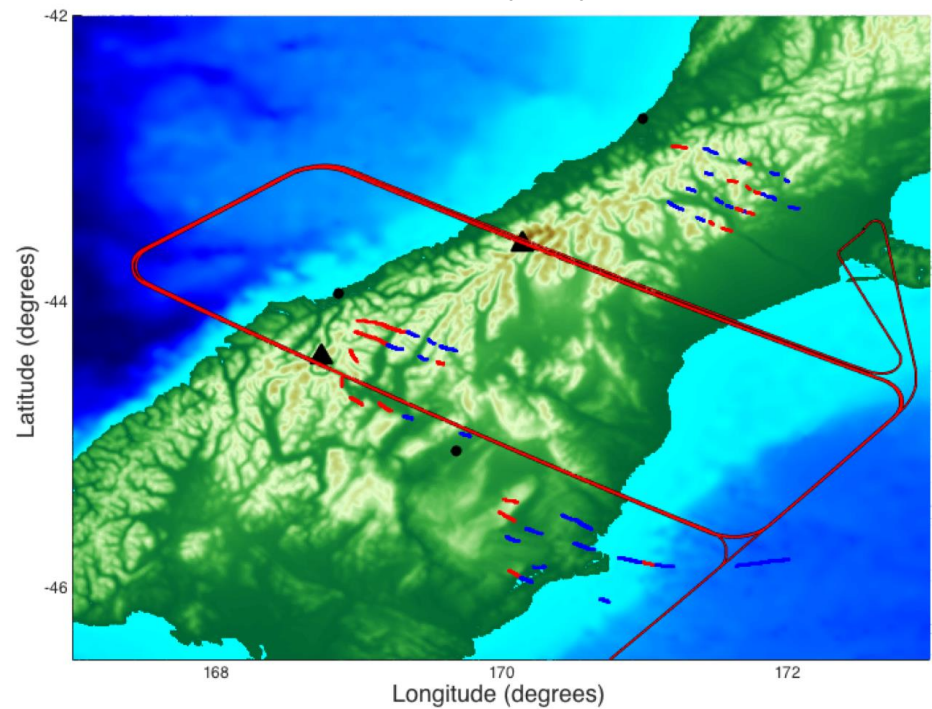
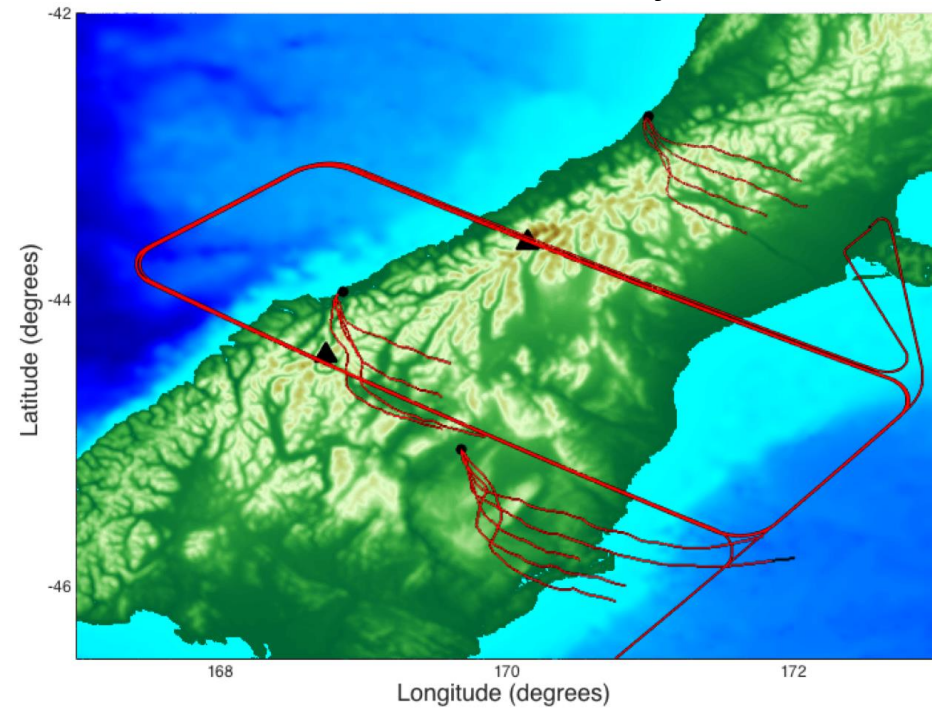
■ Haast
■ Hokitika



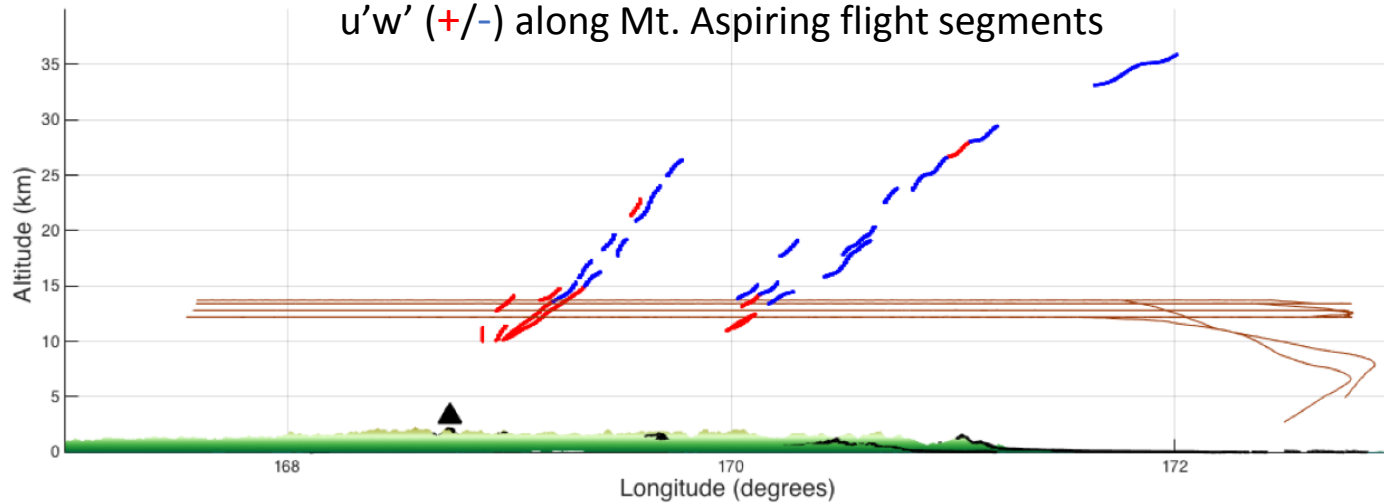
RF12 - 3Z, 6Z, 9Z, 12Z, 15Z Soundings

Sonde and Aircraft Trajectories

$u'w'$ (+/-)



$u'w'$ (+/-) along Mt. Aspiring flight segments



Questions?