

Mobile mesonet data collection in V2Y1

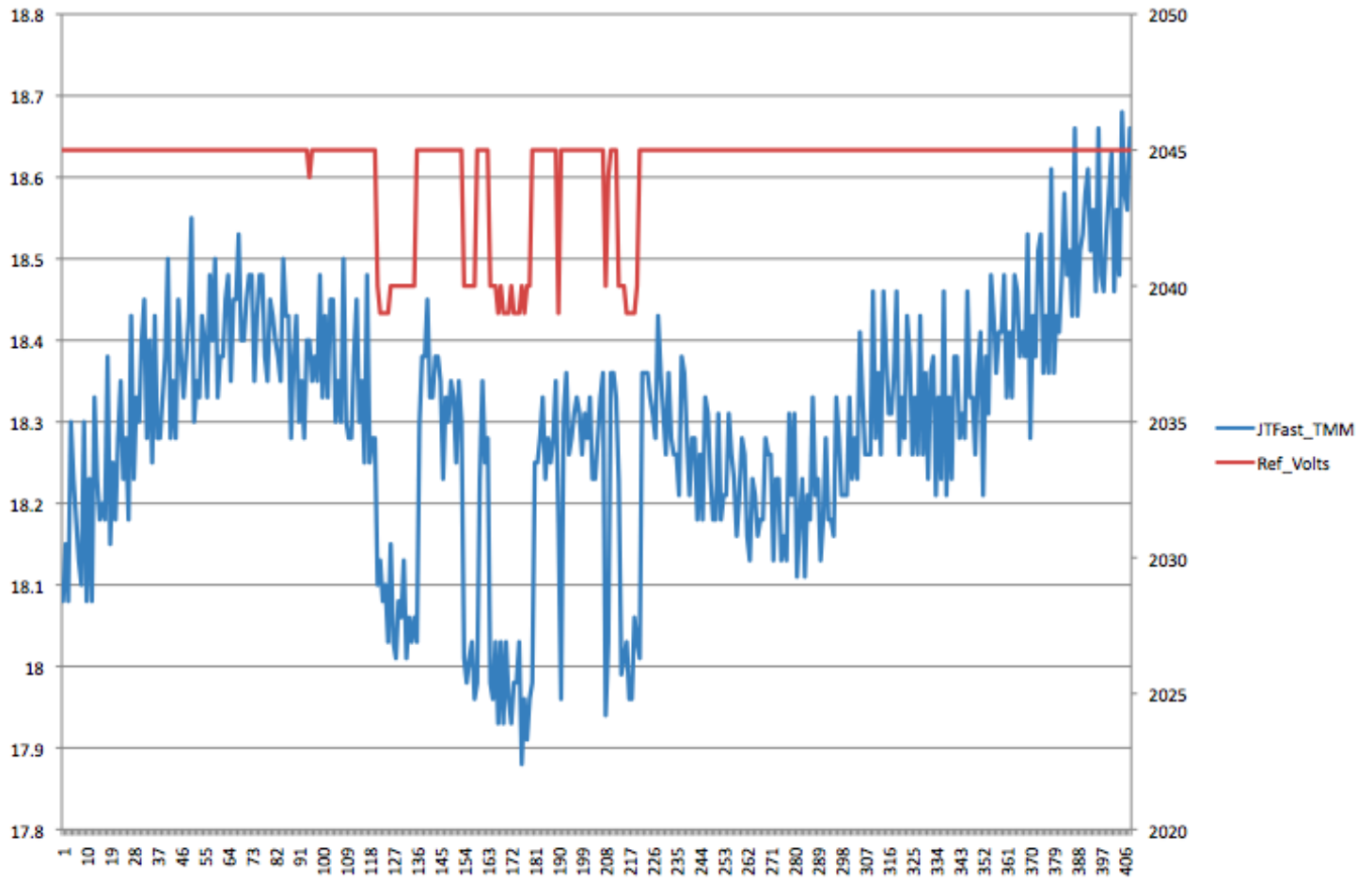
Yvette Richardson and Paul Markowski

Overall impressions

- SASSI + stellar personnel made coordination relatively easy
- Decent sampling of cold pools and, if applicable, mesocyclone regions in every deployment, even when road options were somewhat mediocre
- Notably good deployments
 - 26 May (left-mover), 4 June (Cheyenne), 5 June (LaGrange), 7 June (NW MO), 9 June (Ford, KS), 11 June (SE CO)

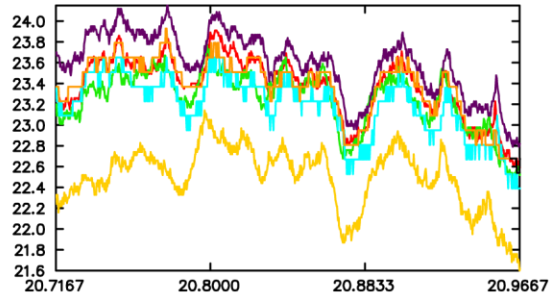
Status of data

- All 2009 data from NSSL mobile mesonet units has been QC'd and bias-corrected
 - P6 (EC) data QC'd but not bias-corrected
 - P8 (Straka) data QC'd but not bias-corrected

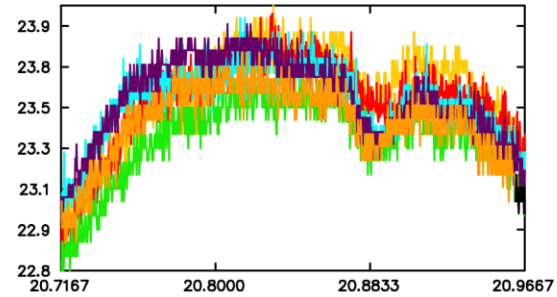


2043:00–2058:00 5 June 2009

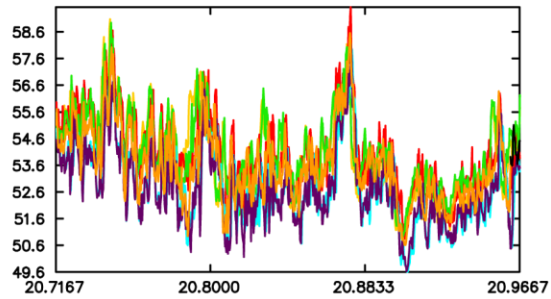
Tfast



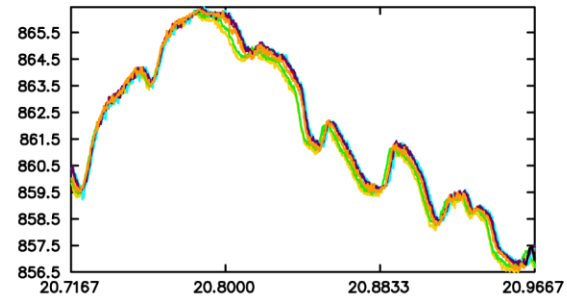
Tslow



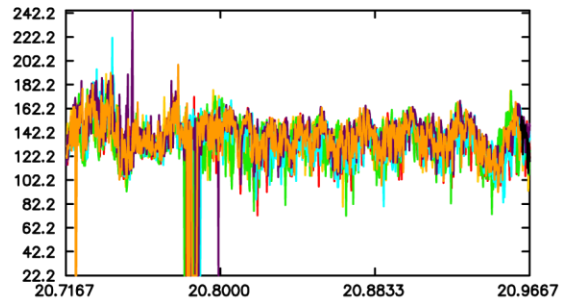
RH



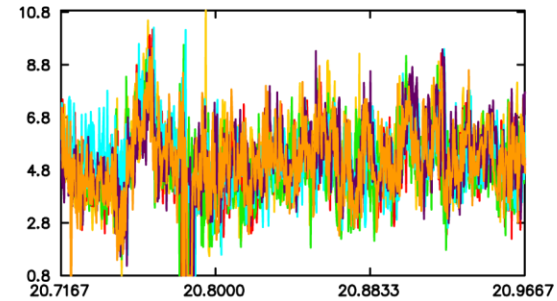
pressure



wind dir



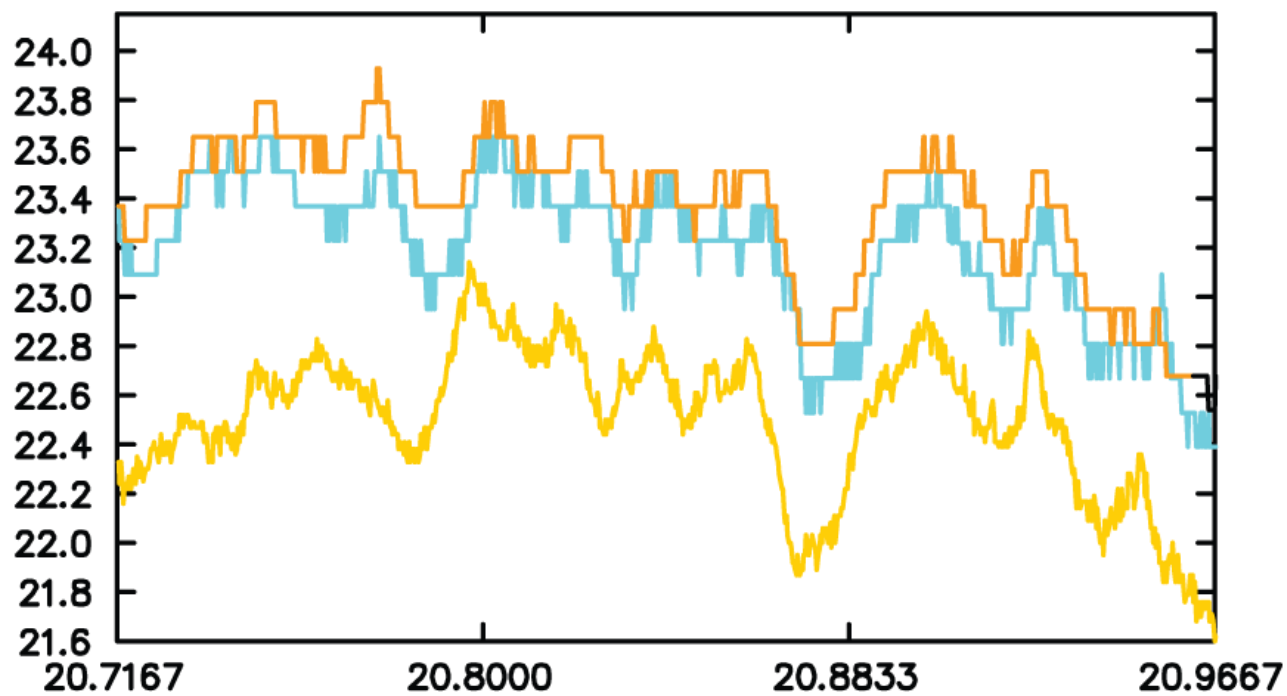
wind spd



P1 P2 P3 P4 P5 P7

- *Need to compare NSSL MM data to CSWR MM data and StickNet!*

Tfast



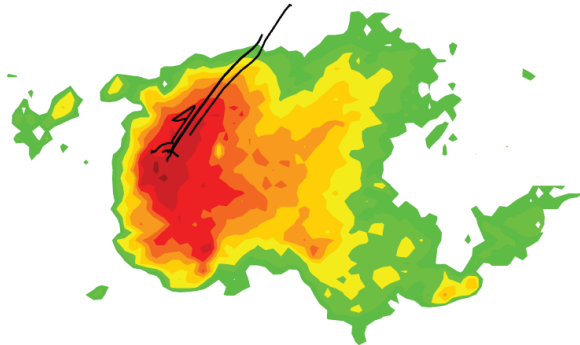
P1

P4

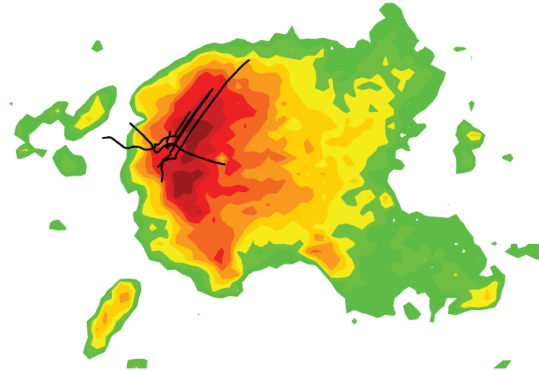
P7

Sampling: 26 May 2009 (left-mover near Decatur, TX)

0053 UTC

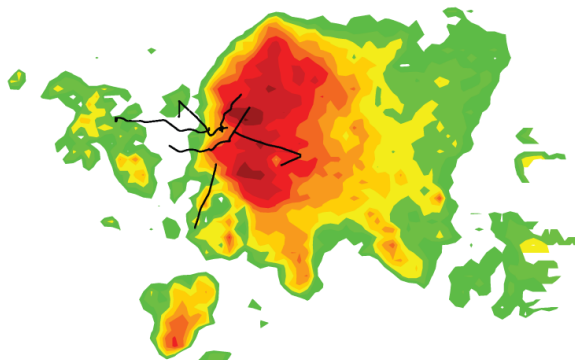


0057 UTC

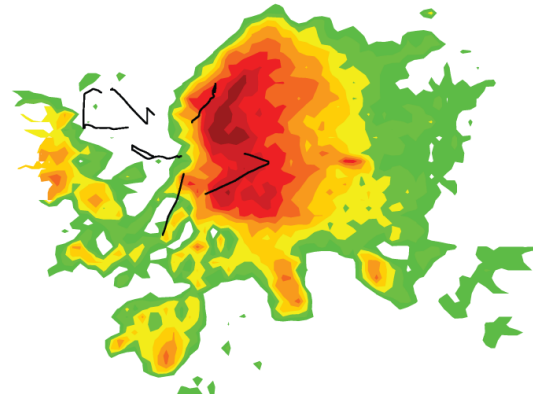


↔
10 km

0102 UTC



0107 UTC



Sampling: 5 June (Goshen Co., WY)

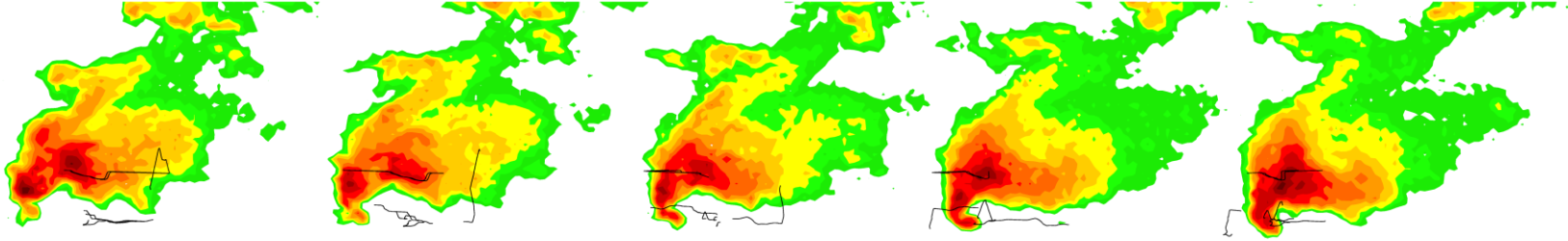
2139 UTC

2143 UTC

2148 UTC

2152 UTC

2157 UTC



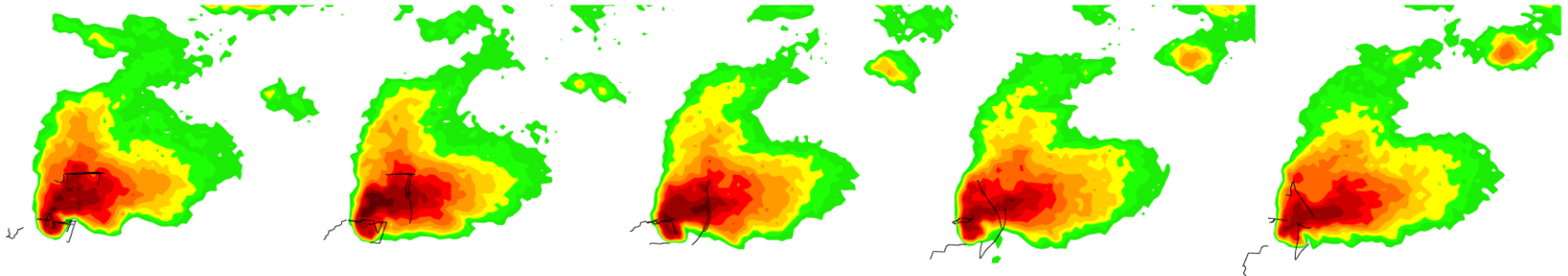
2202 UTC

2206 UTC

2211 UTC

2215 UTC

2220 UTC



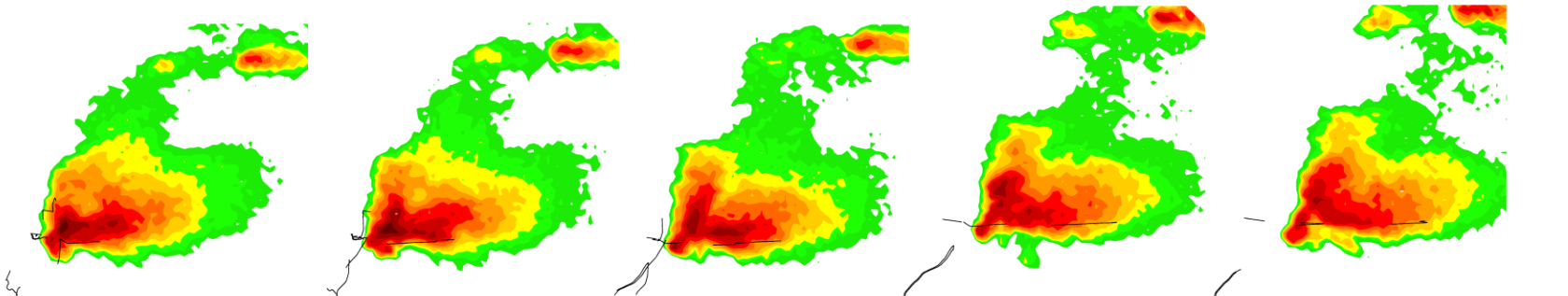
2224 UTC

2229 UTC

2234 UTC

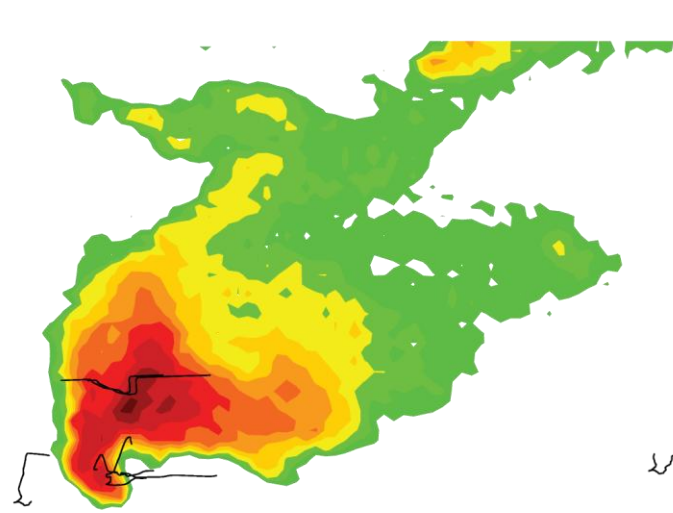
2238 UTC

2243 UTC

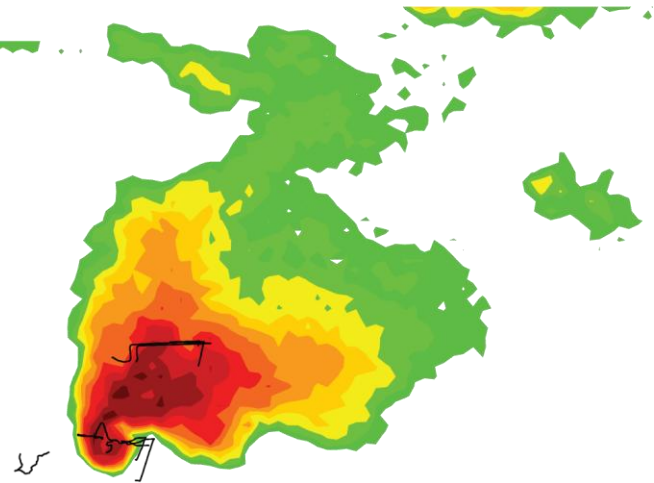


http://met.psu.edu/~marko/MMcoverage_v2/

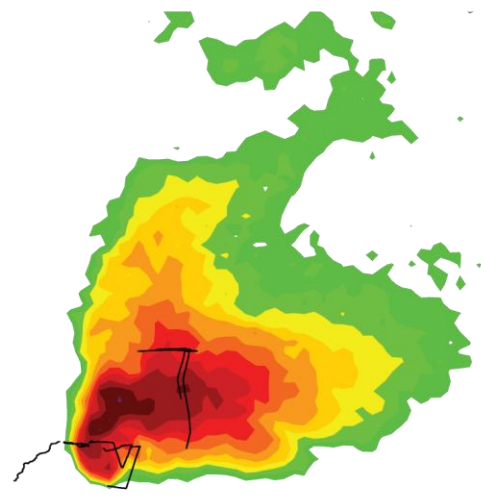
2157 UTC



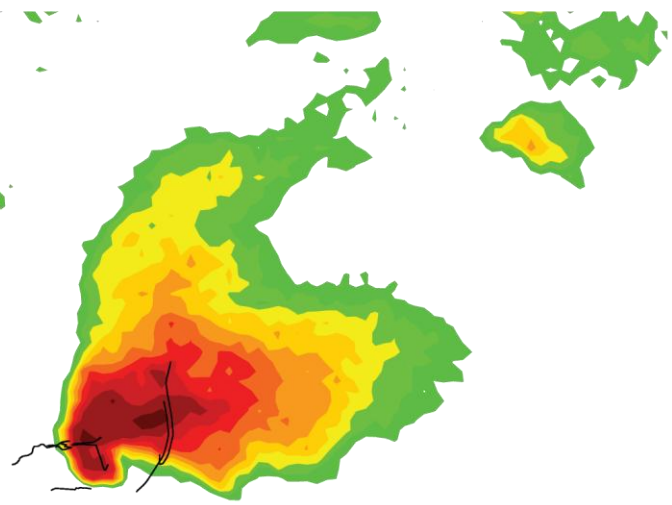
2202 UTC



2206 UTC

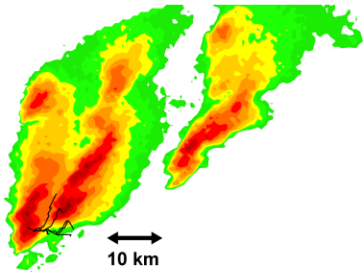


2211 UTC

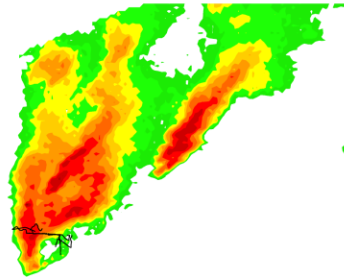


Sampling: 7 June (NW MO)

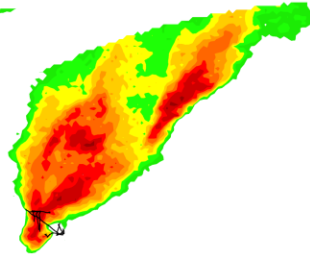
2316 UTC



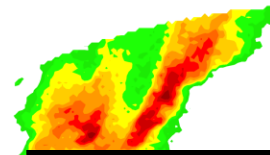
2325 UTC



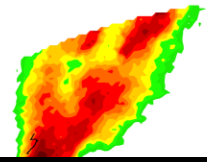
2334 UTC



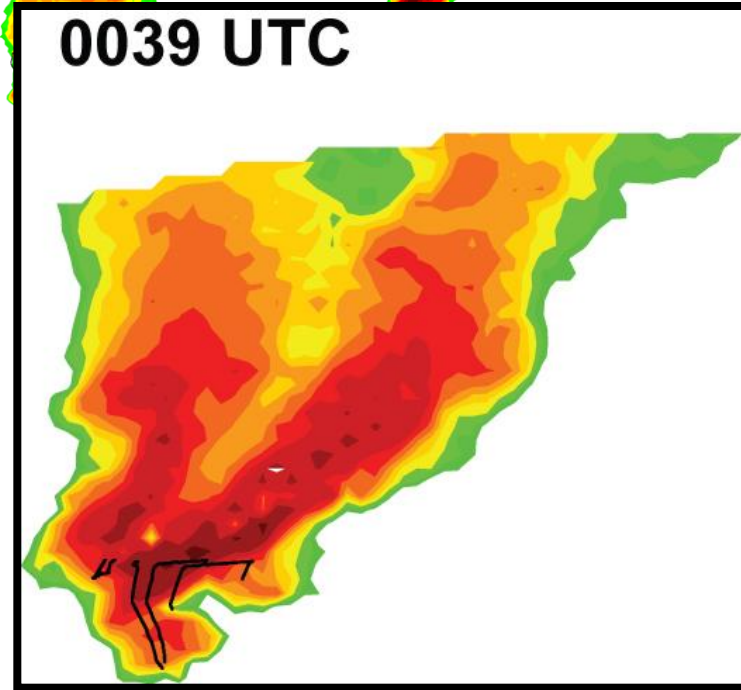
2343 UTC



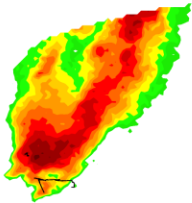
2352 UTC



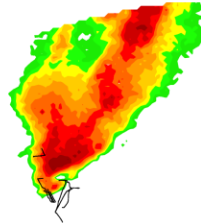
0039 UTC



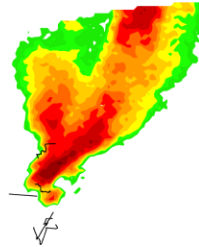
0001 UTC



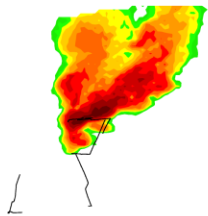
0010 UTC



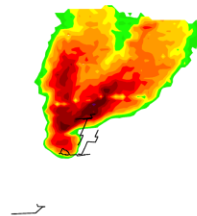
0019 UTC



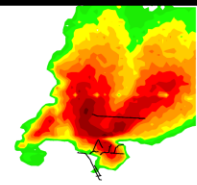
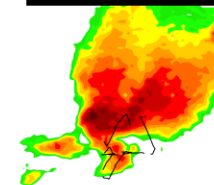
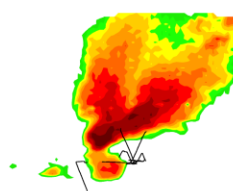
0048 UTC



0057 UTC

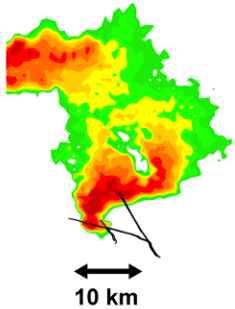


0111 UTC

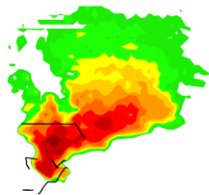


Sampling: 9 June (Ford Co., KS)

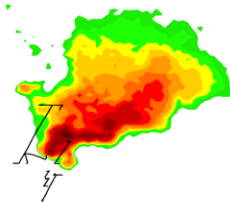
2306 UTC



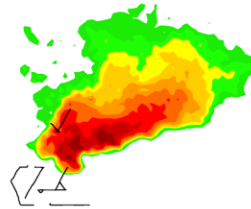
2316 UTC



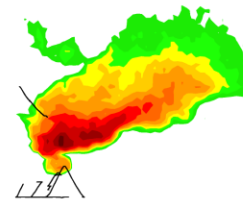
2325 UTC



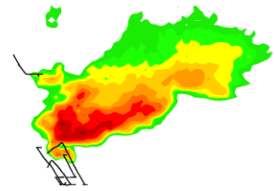
2334 UTC



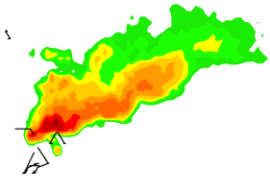
2343 UTC



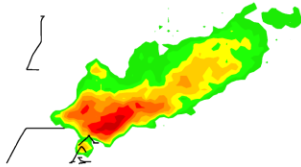
2353 UTC



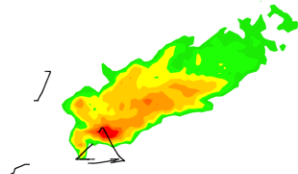
0002 UTC



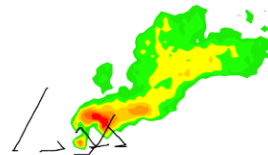
0011 UTC



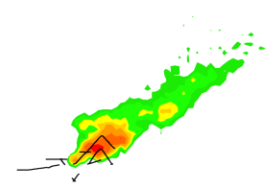
0020 UTC



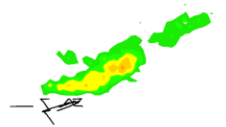
0030 UTC



0039 UTC



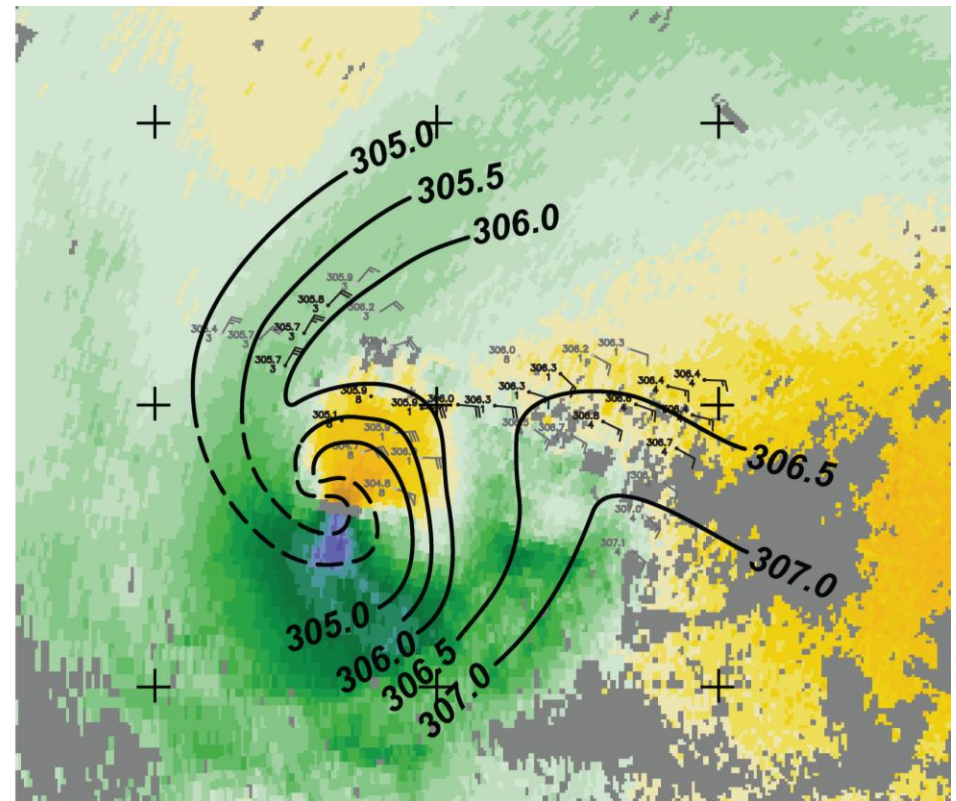
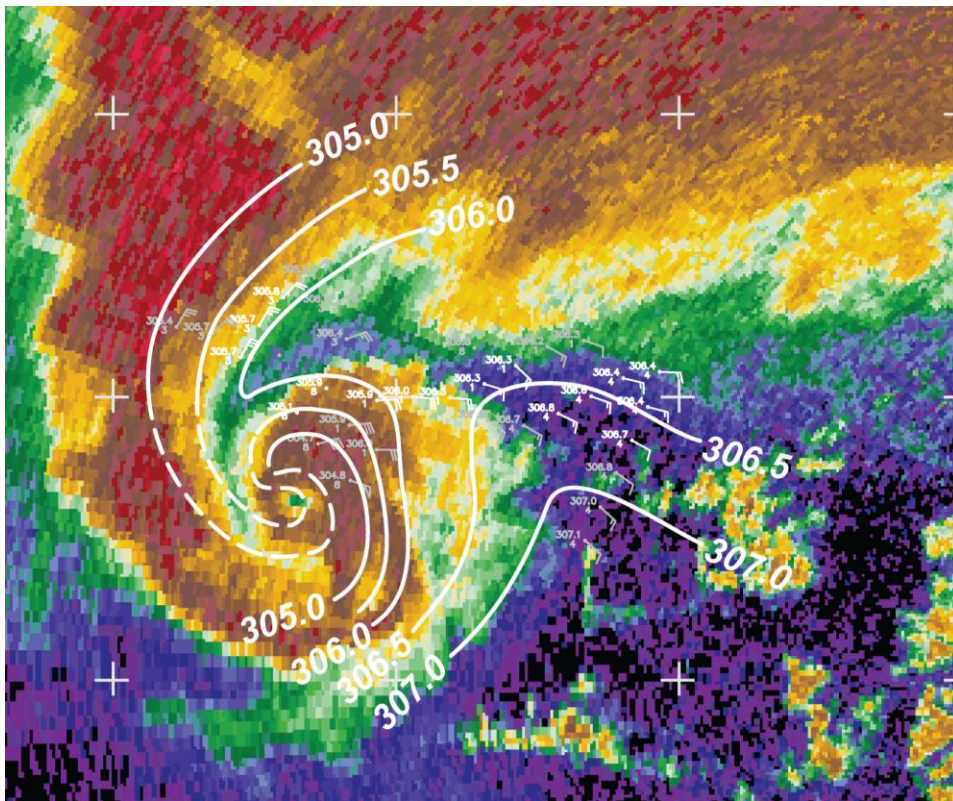
0049 UTC



2202:02 UTC 5 June 2009



Al Pietrycha





Paul Markowski

0120:11 UTC 8 June 2009

