

5A: Marine Boundary Layer Structure and Dynamics

P. Zuidema: microwave LWPs

A. Brewer: Doppler lidar RVB

S. Tucker: Doppler lidar RVB

D. Khelif: Twin Otter turbulence

K Takahashi: Peruvian coastal jet

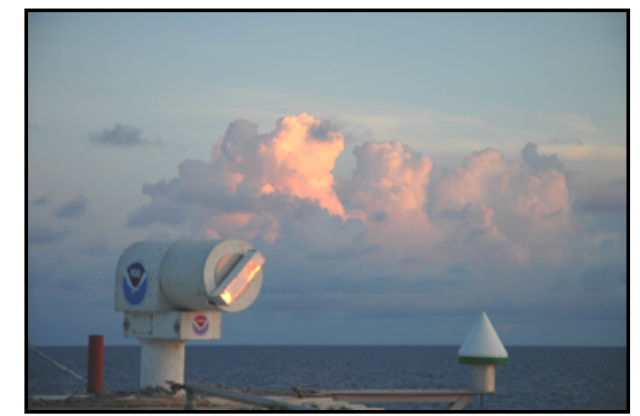
H. Xiao: Sc-shallow Cu transition in UCLA AGCM

|
obs

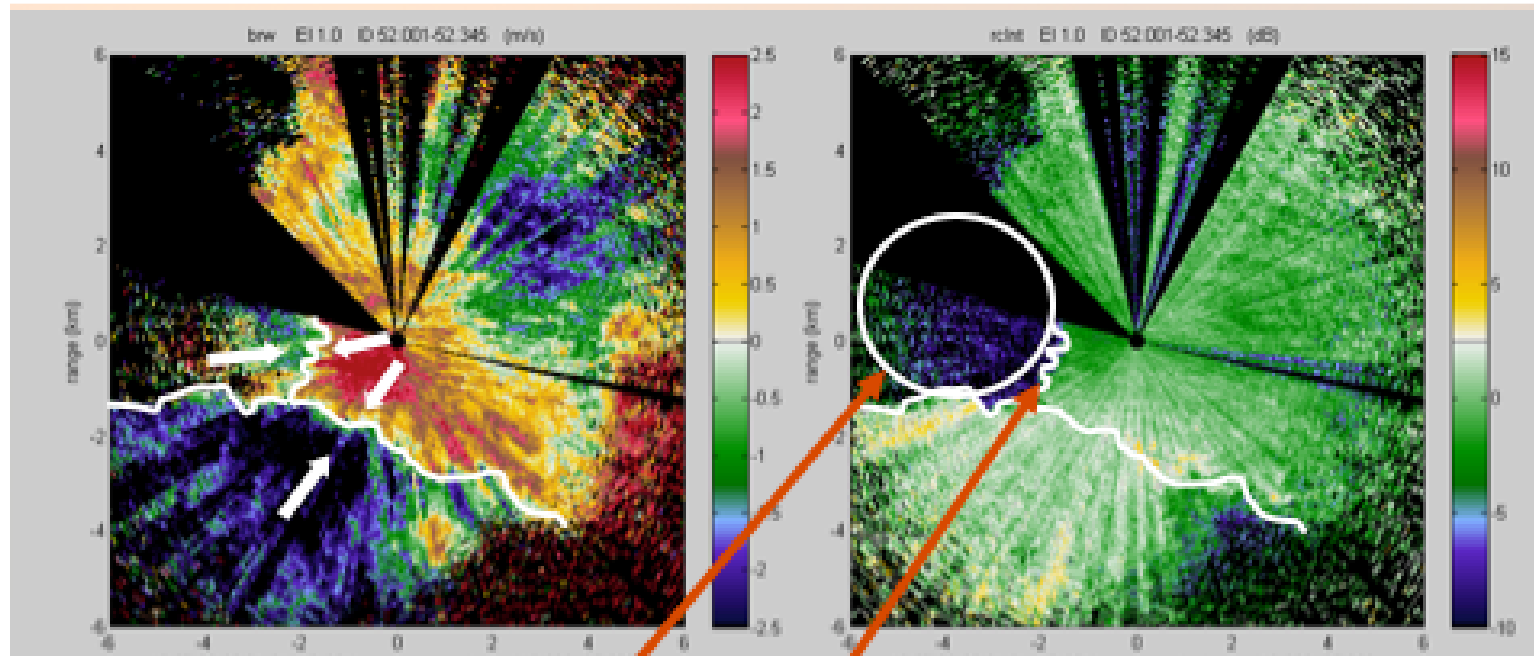
| o/m
mod

Doppler lidar

Alan Brewer: Stratocumulus circulation

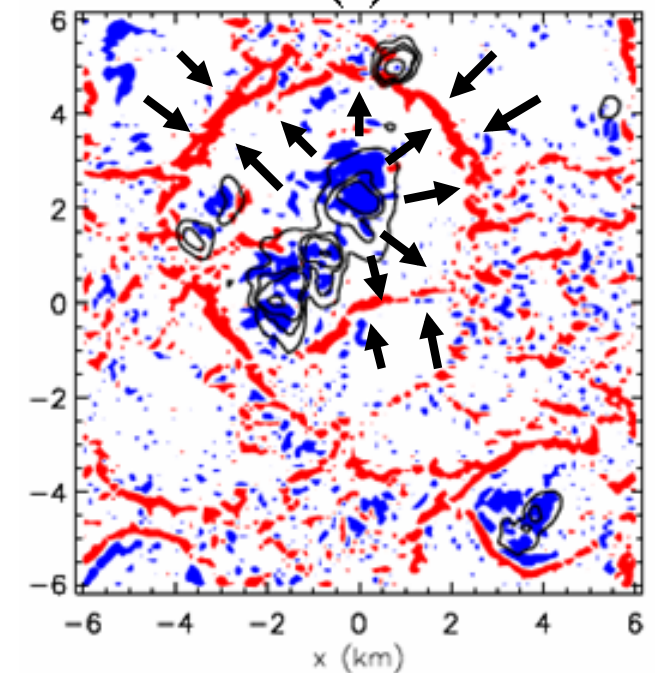
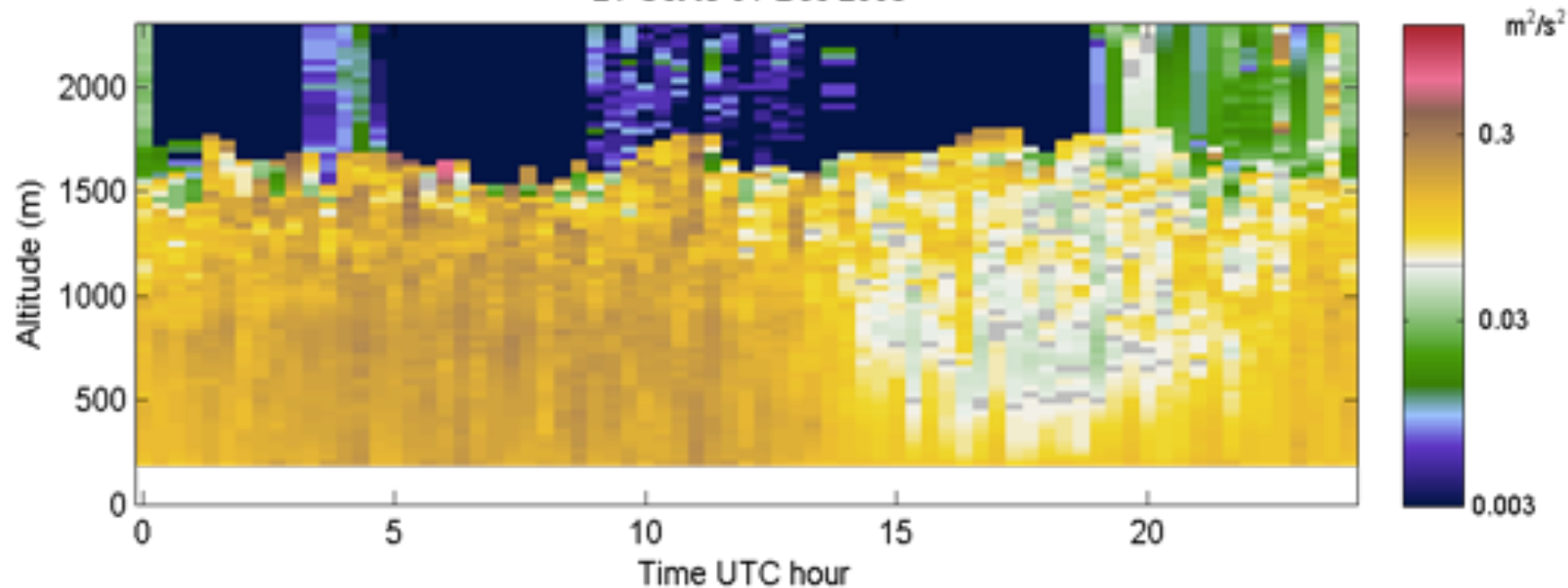


(d)



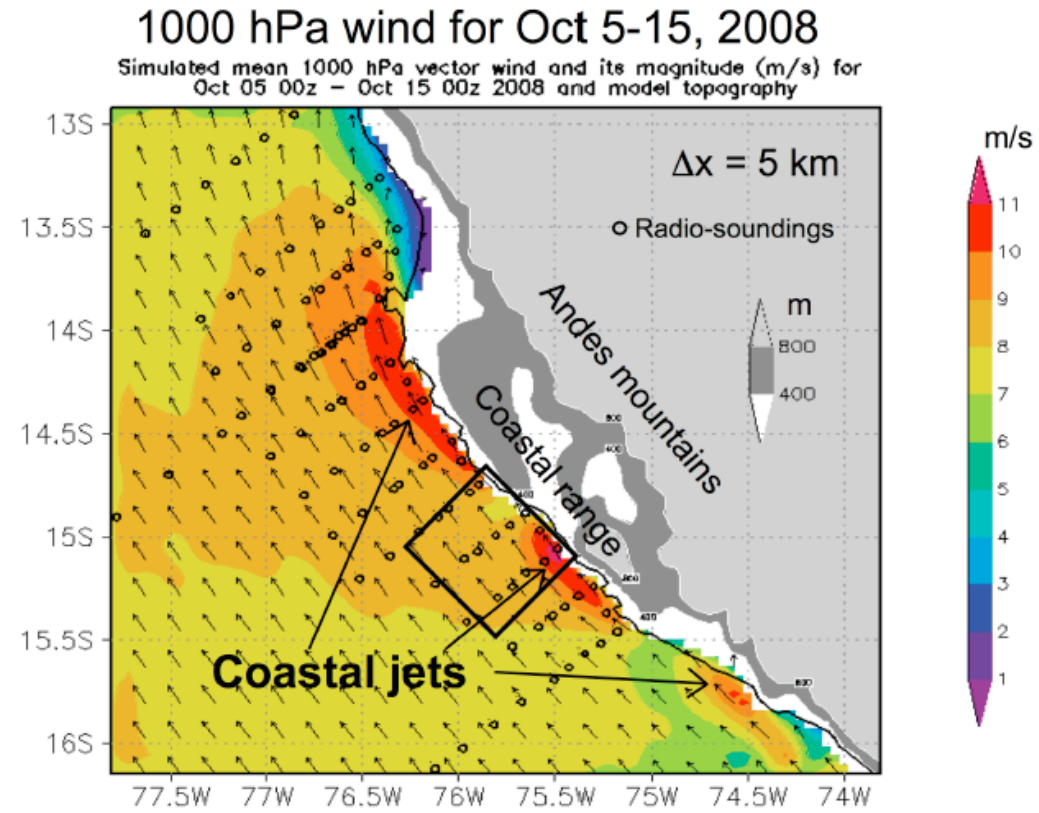
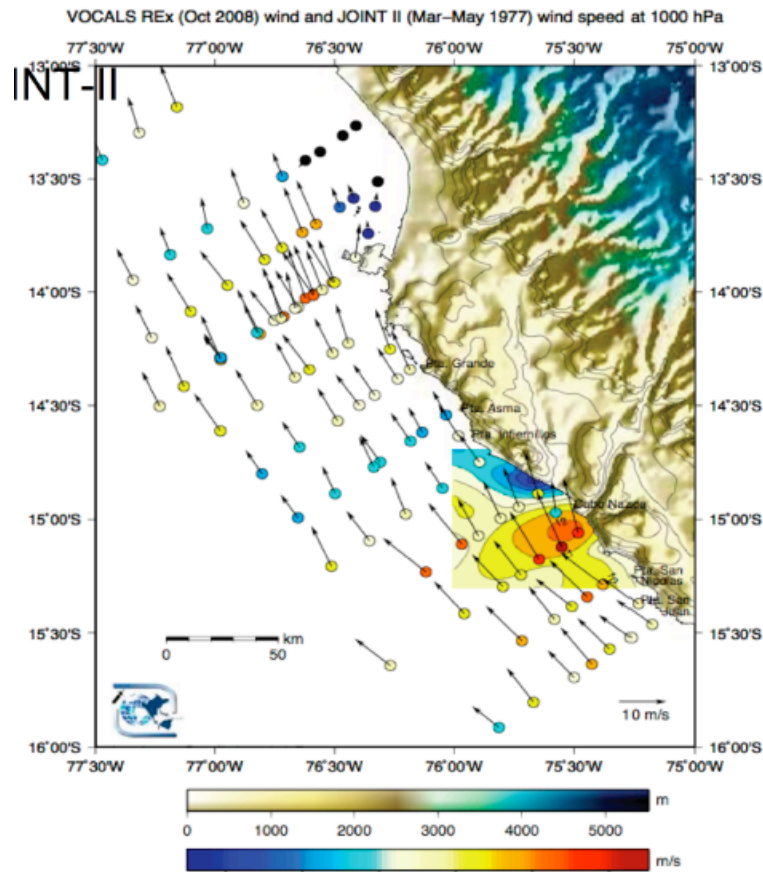
Sara Tucker: Diurnal cycle; daytime velocity variance $\sim 50\%$ lower

HRDL RV Brown VOCALS 2008 - Average Vertical Velocity Variance σ_V^2 (m^2/s^2) Profiles. 21-Oct to 01-Dec 2008



LES model: Xue, Wang, Feingold

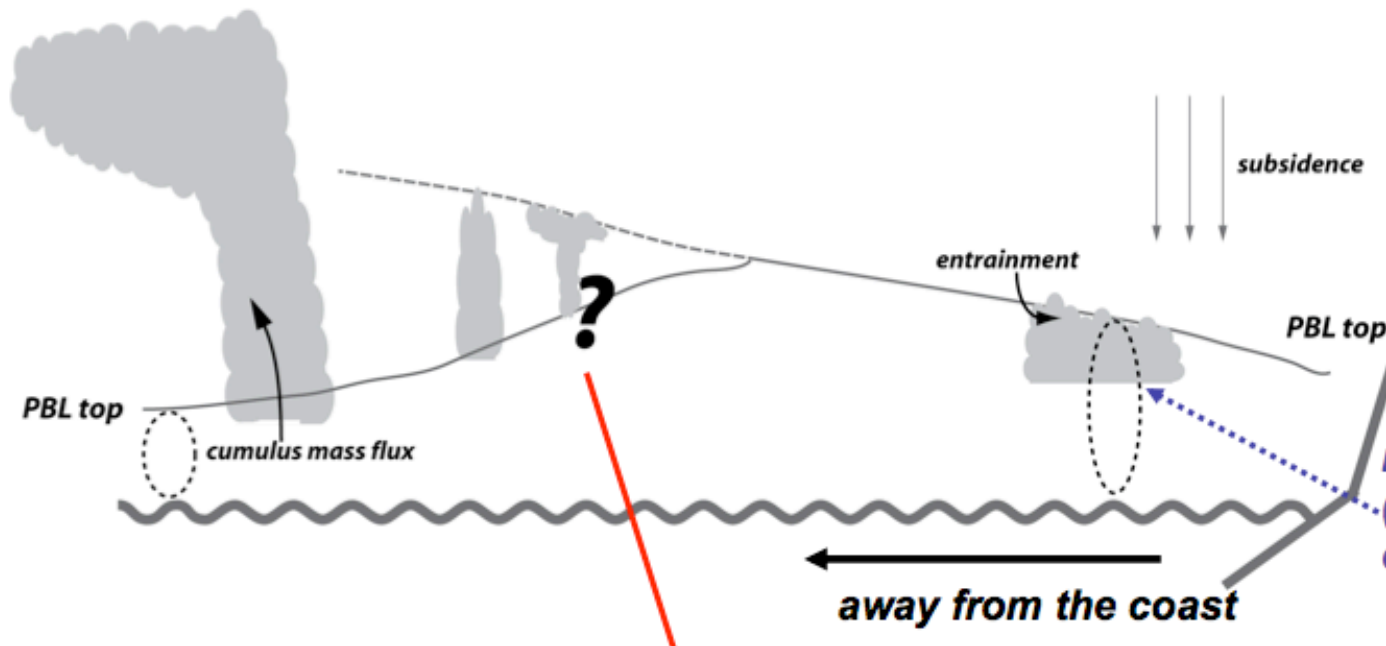
Ken Takahashi: observed & modeled Peruvian coastal jet



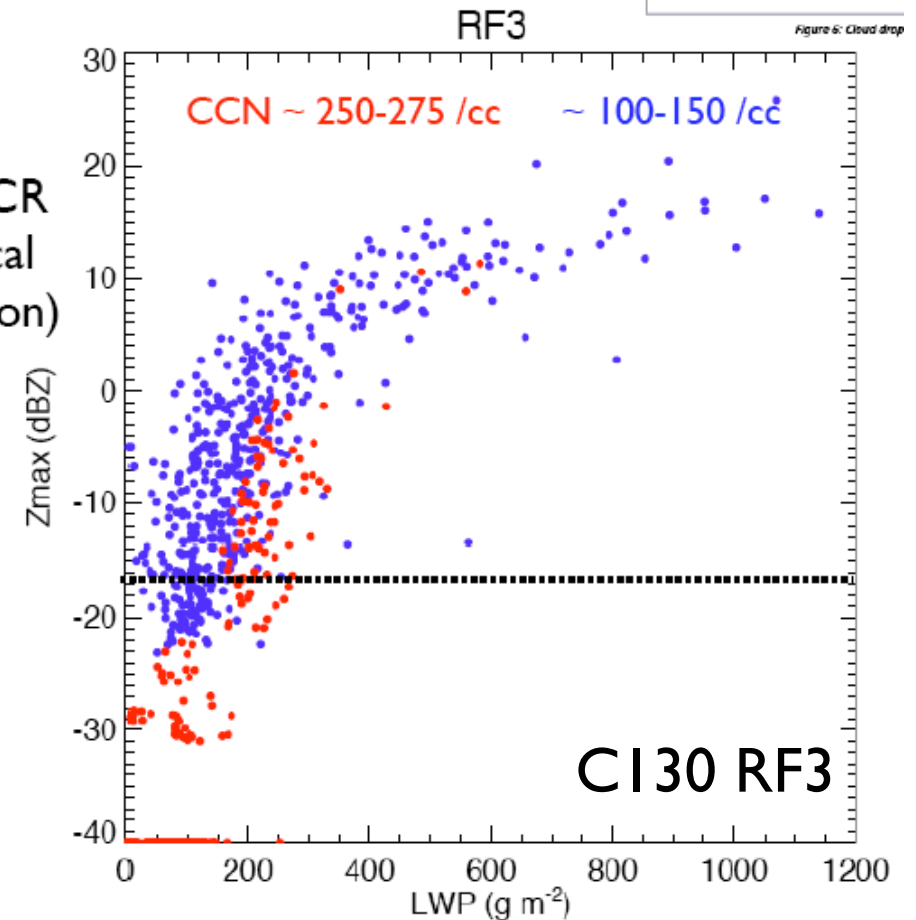
Heng Xiao: improve transitional cloudiness

PZ: drizzle as $f(\text{LWP}, \text{Nd})$

in UCLA AGCM



maximum WCR
dBZ in vertical
column (D. Leon)



Issues raised:

What is the appropriate scale?

What connects disparate processes?