

OWLeS Orographic (O_2)

Summary of Snow Transect Data

Jim Steenburgh, Leah Campbell, and Peter Veals

Department of Atmospheric Sciences

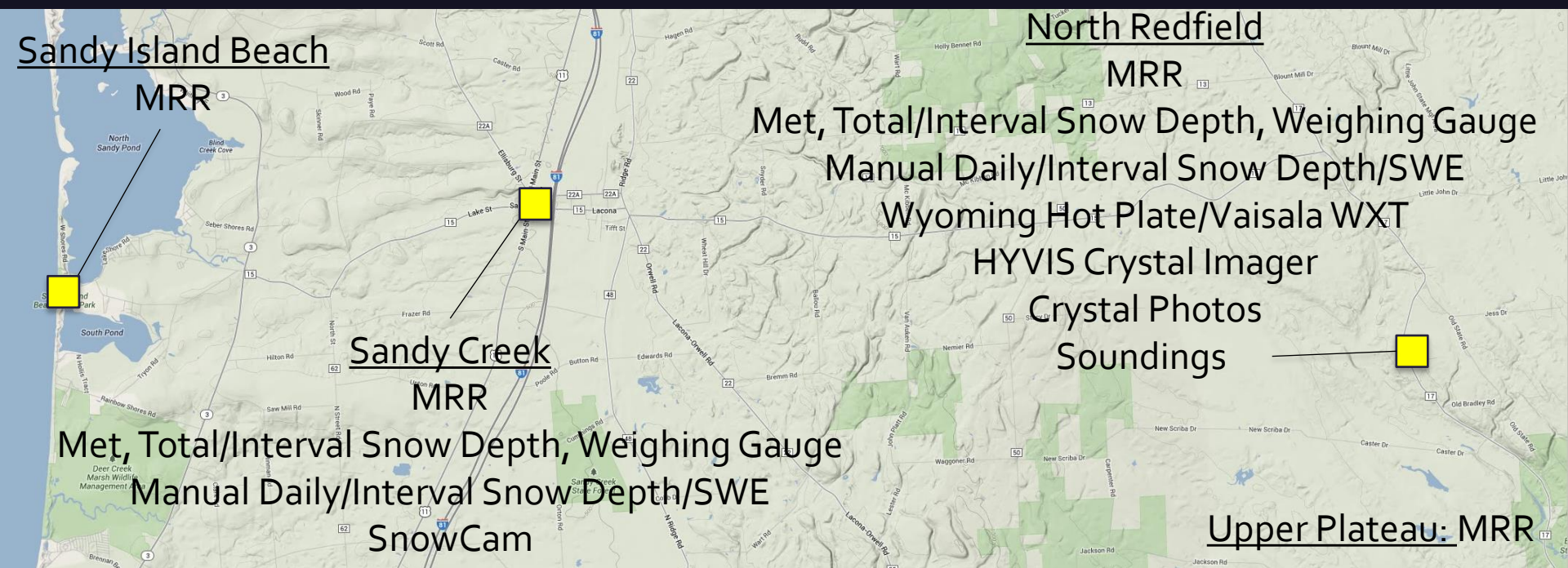
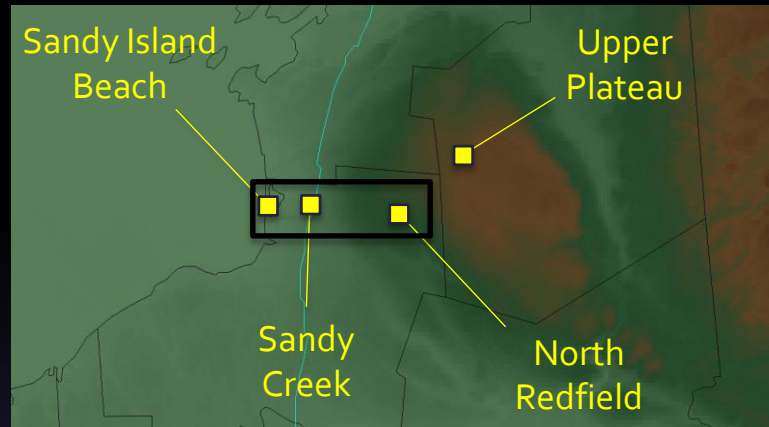
University of Utah

Justin Minder and Ted Letcher

Department of Earth and Atmospheric Sciences

State University of New York, University at Albany

The Transect

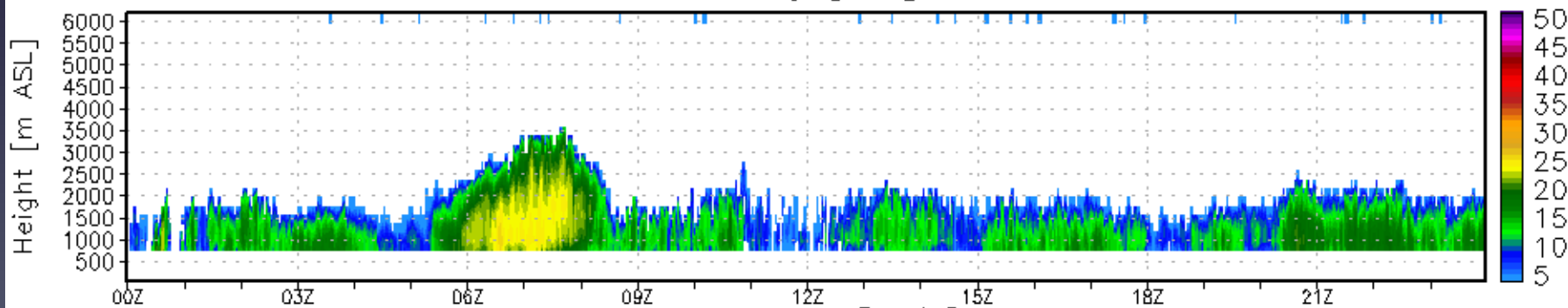


MRR Data Summary

- Bomber: Installed and running since mid Oct to early Nov
- SIB, SC School, Upper Plateau: No outages
- North Redfield: 2-d outage early Jan (not during field phase), Possible 1-d outage Nov
- No major icing problems (but need to check)
- **Need to cross calibrate**



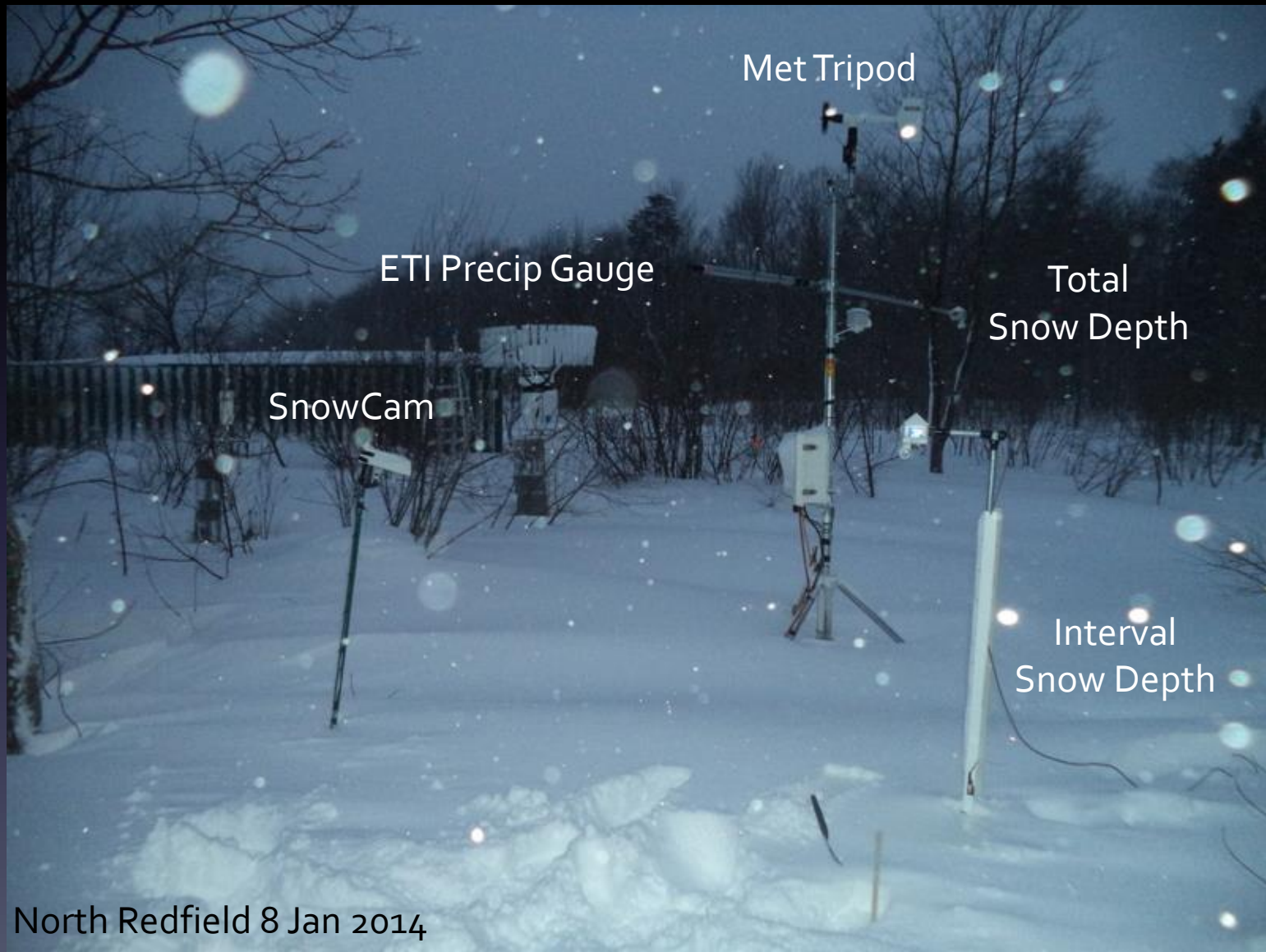
SNDCR Processed Reflectivity [dBz] Valid: JAN 07th 2014



Met Station Summary



Met Station Summary



North Redfield 8 Jan 2014

Met Station Summary

- Operating continuously since 4 Dec
- No known outages
- Need to QC
- IOP1-5: Sites generally well sheltered
- IOP6-10: More wind
 - Sandy Creek well sheltered
 - North Redfield site now more wind exposed

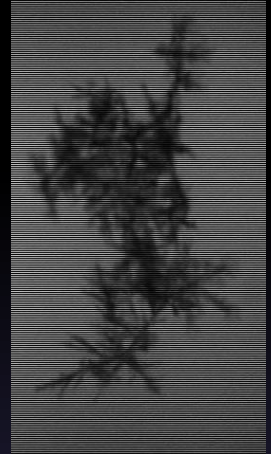
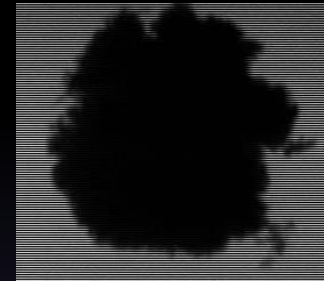
Manual Snow Obs

- IOP₁₋₅:
 - Very high quality at both sites
 - 6-h during and around IOPs – very nice
 - Doing daily sometimes, but not finding them all that useful
- IOP₆₋₁₀:
 - Quality ranges from poor to fair at North Redfield and poor to good at Sandy Creek
 - Nothing too interesting except for possible down-band particle sorting

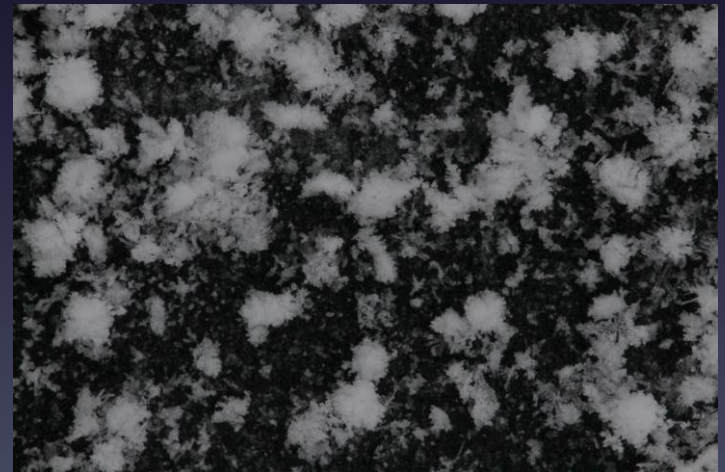


Hyvis/Manual Crystal Photos

- Hyvis: Intermittently working during IOPs
 - Image frequency varies and can be low



- Manual photos
 - Concentrating on UWKA flight periods
 - Varying quality – have better system now
 - Issue in IOPs6-10: Wind lofting & transport



Soundings

- Have made it to 500 mb or higher nearly all scheduled launches
- Fired at will during one IOP
- Probably out of LLAP soundings
 - Have 20 extras coming from Utah so not worried
- Need to be QC'd



Data Access

- Preliminary data access @
home.chpc.utah.edu/owles
- Login: owles
- Password: lake-effect!
- Very little documentation
- Expect changes!