



Ice in Clouds Experiment – Tropical (ICE-T)

Web Site & Data Management

Janine Aquino

Linda Echo-Hawk

Steve Williams

ICE-T Workshop, Oct 17, 2013

NCAR



NCAR/EOL ICE-T Efforts Sponsored by



http://www.eol.ucar.edu/field_projects/ice-t

Description
Scientific Objectives
Data Access
Data Documentation
Facilities & Platforms
Publications
Documents
Meetings & presentations
Logistics & Safety
Related links
Digital Media
Participants & Mailing Lists
Contact info

The screenshot shows the top navigation bar of the ICE-T website. It includes links for 'Closures/Emergencies', 'Locations/Directions', and 'Find People'. Below this is a secondary navigation bar with 'Data & Software', 'News & Events', and 'Help'. A search bar is located on the right side of the page, with 'My account' and 'Log out' links nearby. The main content area features a sidebar with several menu items: 'ICE-T PAGES' (Project Safety Documentation), 'DATA ACCESS' (ICE-T Data Archive, ICE-T Field Catalog), 'DATA DOCUMENTATION' (Data Policy, Dataset Documentation Guidelines, Data Submission Instructions), 'FACILITIES & PLATFORMS' (C-130, WCR), and 'PUBLICATIONS' (ICE-T Publications). A red arrow points to the 'ICE-T Data Archive' link in the 'DATA ACCESS' section.

Ice in Clouds Experiment - Tropical



ICE-T Field Catalog

Catalog Home

Daily Reports

Operational Products

Model/Forecast Products

Research Products

Missions

Tools & Links

Data Access

Help ?

Boulder, Colo: Wed, Oct 16, 9:58 PM UTC: Thur, Oct 17, 3:58 Z St Croix, USVI: Wed, Oct 16, 11:58 PM

Current Reports/Links:

[Plan of the Day](#)

[Weather Discussion](#)

X-Chat Instant access



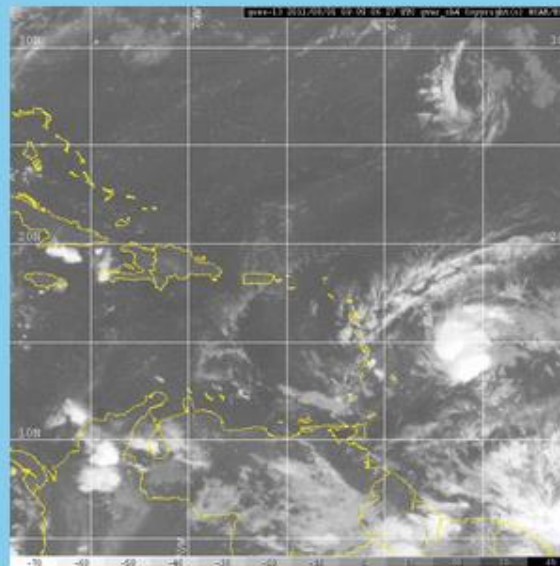
Help Documentation

*need passwd? :
loehrer at ucar.edu*

[Mission Coordinator Display](#)

[Catalog Earth Display](#)

Latest ICE-T Region Thermal IR Loop:



Additional Imagery:

[Latest 4 hours GOES-13 Visible](#)
[Latest 4 hours GOES-13 Water Vapor](#)

General Information:

[ICE-T Web Site](#)

C-130 Plans:




The ICE-T Field Phase has ended.



[Comments](#)



ICE-T Data Sets

Data Set Name (Responsible Group/PIs shown in parentheses)	Date Posted	Info
Aerosols		
NSF/NCAR C-130 Aerosol Particle Spectrometer with Polarization Detection (APSPD) Data [Baumgardner, Darrel (DMT)]	New 2013-10-16	
NSF/NCAR C-130 Aerosol Time-of-Flight Mass Spectrometer (ATOFMS) Data [Prather, Kim (UCSD)]	Preliminary	
NSF/NCAR C-130 CCN Data [Dhaniyala, Suresh (Clarkson)]	Expected 2013-12-15	
NSF/NCAR C-130 Cloud Condensation Nuclei (CCN) Counter Data [Hudson, Jim (DRI)]	Updated 2013-05-02	
NSF/NCAR C-130 High-flow Dual-channel Differential Mobility Analyzer (HDDMA) Aerosol size distributions [Dhaniyala, Suresh (Clarkson U.)]	New 2013-10-17	
NSF/NCAR C-130 Ice Nuclei Counter (CFDC) Data [DeMott, Paul (CSU)]	2012-04-19	
NSF/NCAR C-130 Impactor Data [Anderson, Jim (ASU)]		
NSF/NCAR C-130 Isotopic Water (PICARRO) Data [Noone, David (CU)]	Expected 2013-11-20	
NSF/NCAR C-130 Streaker Filter Pack Data [Anderson, Jim (ASU)]		
NSF/NCAR C-130 Wyoming Cloud Lidar (WCL) Aerosol Spatial Distribution Images and Data [Wang, Zhen (U Wyoming)]	Preliminary 2011-12-05	
Aircraft		

DATA BY CATEGORY

- [Aerosols](#)
- [Aircraft](#)
- [Ancillary](#)
- [Cloud Properties](#)
- [Land Based](#)
- [Model](#)
- [Oceanography](#)
- [Photography](#)
- [Radar](#)
- [Satellite](#)
- [Ship Based](#)
- [Upper Air](#)

[Back to ICE-T](#)

Email comments & questions to codiac@ucar.edu

Missing Datasets

- CCN Data [Dhaniyala, Suresh (Clarkson)] **Expected 2013-12-15**
- Isotopic Water (PICARRO) Data [Noone, David (CU)] **Expected 2013-11-20**
- Giant CCN (GNI) Data [Jensen, Jorgen (NCAR-EOL-RAF)] **In Progress**
- ICE-T Chat Logs [(NCAR-EOL)] **In Progress**
- Impactor Data [Anderson, Jim (ASU)]
- Streaker Filter Pack Data [Anderson, Jim (ASU)]
- In Situ Carbon monoxide mixing ratio (CO) [Campos, Teresa, Ilana Pollack, and Cliff Heizer (NCAR-ESSL-CARI, NCAR-EOL-RAF)]
- Picarro WS-CRDS in situ Carbon dioxide (CO₂) mixing ratio [Flocke, F. , T. Campos (NCAR-ESSL-CARI, NCAR-EOL-RAF)]



NCAR/EOL ICE-T Efforts Sponsored by



View Edit Revisions Log Devel



Ice in Clouds Experiment – Tropical (ICE-T)

July 1, 2011 to July 31, 2011 Project Location: St Croix, USVI

Project Description:

More than 50% of the earth's precipitation originates in the ice phase. Ice nucleation, therefore, is one of the most basic processes that lead to precipitation. The poorly understood processes of ice initiation and secondary ice multiplication in clouds result in large uncertainties in the ability to model precipitation production and to predict climate changes. Therefore, progress in modeling precipitation accurately requires a better understanding of ice formation processes.



ICE-T Aircraft



ICE-T PAGES
Project Safety Documentation

DATA ACCESS
ICE-T Data Archive
ICE-T Field Catalog

DATA DOCUMENTATION
Data Policy
Dataset Documentation Guidelines
Data Submission Instructions

FACILITIES & PLATFORMS
C-130
WCR

PUBLICATIONS
ICE-T Publications

Data Submission Instructions

Submit data and documentation to:

FTP: ftp.eol.ucar.edu

Login: anonymous *(No password required.)*

cd /pub/data/incoming/ice-t

It is very important to send an e-mail to [sfw at ucar.edu](mailto:sfw@ucar.edu) indicating that the data file(s) have been FTPed



NCAR/EOL ICE-T Efforts Sponsored by



View

Edit

Revisions

Log

Devel



Ice in Clouds Experiment – Tropical (ICE-T)

July 1, 2011 to July 31, 2011 Project Location: St Croix, USVI

Project Description:

More than 50% of the earth's precipitation originates in the ice phase. Ice nucleation, therefore, is one of the most basic processes that lead to precipitation. The poorly understood processes of ice initiation and secondary ice multiplication in clouds result in large uncertainties in the ability to model precipitation production and to predict climate changes. Therefore, progress in modeling precipitation accurately requires a better understanding of ice formation processes.

ICE-T Aircraft



ICE-T PAGES

Project Safety Documentation

DATA ACCESS

ICE-T Data Archive
ICE-T Field Catalog

DATA DOCUMENTATION

Data Policy
Dataset Documentation Guidelines
Data Submission Instructions

FACILITIES & PLATFORMS

C-130
WCR

PUBLICATIONS

ICE-T Publications





Ice in Clouds Experiment – Tropical (ICE-T)

Publication References



[How to Submit Publication References to this List](#)

[Publications](#)

[Conferences](#)

[Reports](#)

[Theses](#)

[Other Citation Links](#)

Publications

[A-D](#)

[E-H](#)

[I-L](#)

[M-P](#)

[Q-T](#)

[U-Z](#)

[Back to Top](#)

Conference Proceedings

[A-D](#)

[E-H](#)

[I-L](#)

[M-P](#)

[Q-T](#)

[U-Z](#)

[Back to Top](#)

- Dhaniyala, S., L. Craig, A. Moharreri, M. Brown, T. Lathem, A. Nenes, D. C. Rogers (2011), An Overview of Observations of Interstitial Aerosol during ICE-T, Abstract #A13A-0206 *Poster* presented at 2011 Fall Meeting, AGU, San Francisco, Calif., 5-9 Dec.
- Heymsfield, A. J., P. Field, K. A. Prather, P. J. DeMott, S. Lasher-Trapp, P. Lawson, D. C. Rogers, J. L. Stith, Z. Wang, D. Leon, J. French, and S. Haimov (2011), Early Ice Formation in Tropical Maritime Convection: First Results from ICE-T, Abstract #A13A-0205 *Poster* presented at 2011 Fall Meeting, AGU, San Francisco, Calif., 5-9 Dec.

Publication Reference Submission Instructions

- To submit an ICE-T publication reference, please send an email to Steve Williams at [sfw at ucar dot edu](mailto:sfw@ucar.edu) including the following information:
- **Corresponding Author, email, organization/institution**
- **Citation**
- **URL** of online publication. If publication is *not* available on-line, please include as attachment to e-mail, if possible



NCAR/EOL ICE-T Efforts Sponsored by





Ice in Clouds Experiment – Tropical (ICE-T)

Questions?

janine@ucar.edu

sfw@ucar.edu



NCAR/EOL ICE-T Efforts Sponsored by

