

# Cloud microphysical properties in cirrus during ATTREX



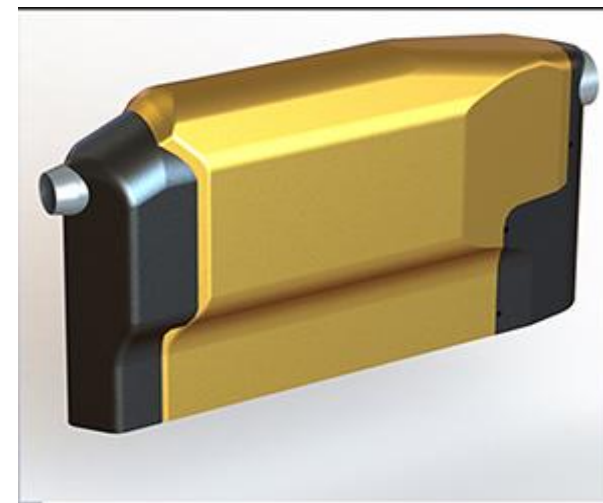
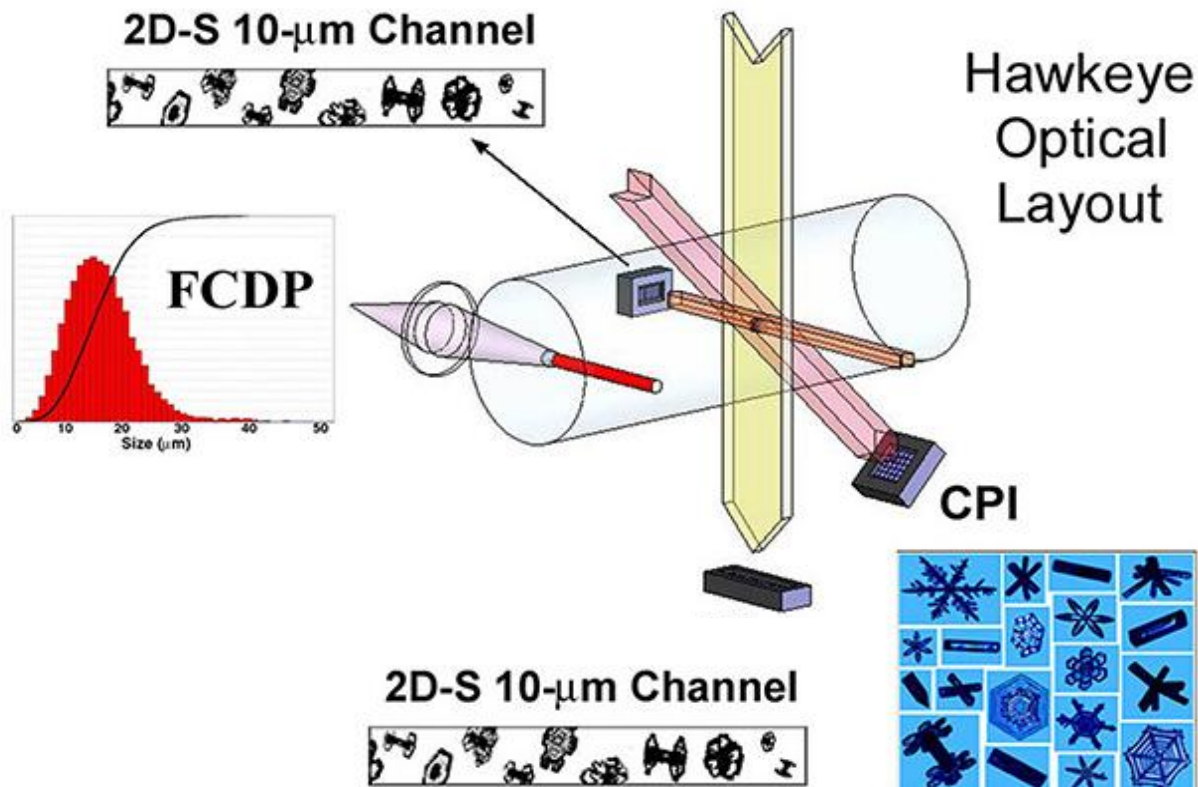
Sarah Woods<sup>1</sup>, Sara Lance<sup>1</sup>, Eric Jensen<sup>2</sup>, Nick Krause<sup>1</sup>, R. Paul Lawson<sup>1</sup>, Bruce Gandrud<sup>1</sup>, Troy Thornberry<sup>3</sup>, Andrew W. Rollins<sup>3</sup>, Paul Bui<sup>2</sup>

<sup>1</sup> SPEC Incorporated, Boulder, CO

<sup>2</sup> NASA Ames Research Center, Moffet Field, CA

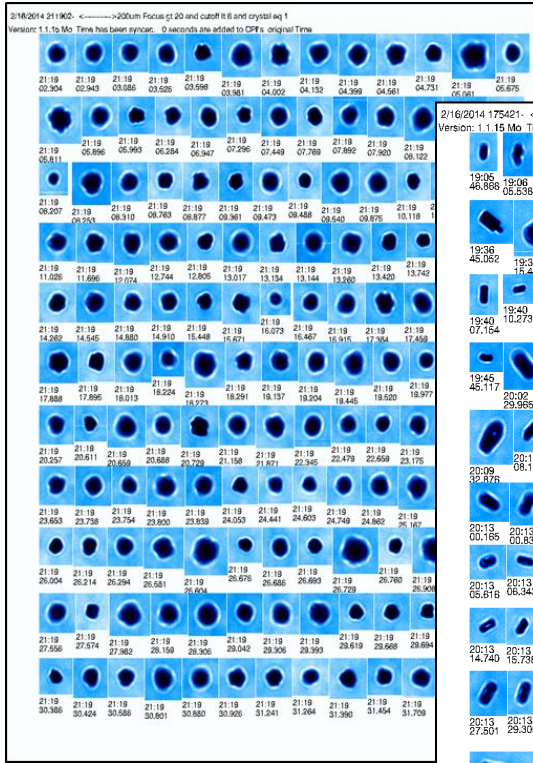
<sup>3</sup> NOAA ESRL Chemical Sciences Division, Boulder, CO

Instrument	Resolution	Measurement Range	Measurement Technique
Hawkeye-CPI (cloud particle imager)	2.3 $\mu\text{m}$	2.3 $\mu\text{m}$ - 2.36 mm	CCD (camera)
Hawkeye-FCDP	2 $\mu\text{m}$	1 $\mu\text{m}$ - 50 $\mu\text{m}$	Forward Scattering
Hawkeye-2D-S	10 $\mu\text{m}$	10 $\mu\text{m}$ - 1.28 mm	Diode Array (128)

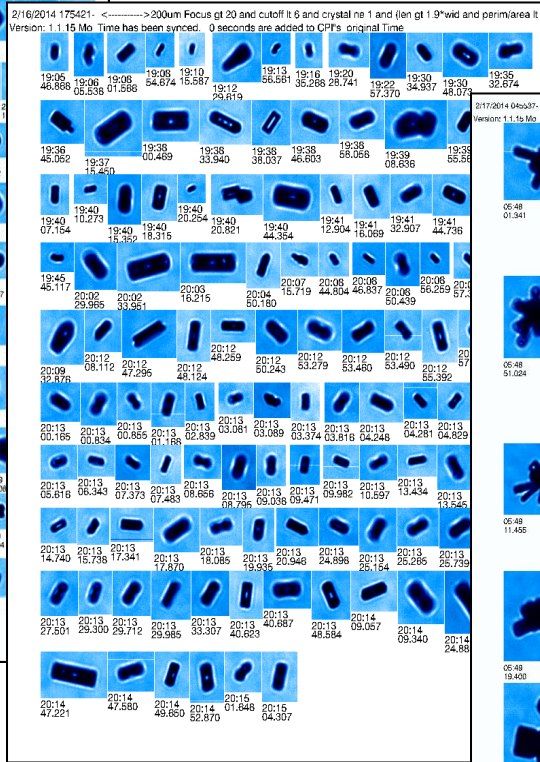


# Habit Classification Feb 16, 2014

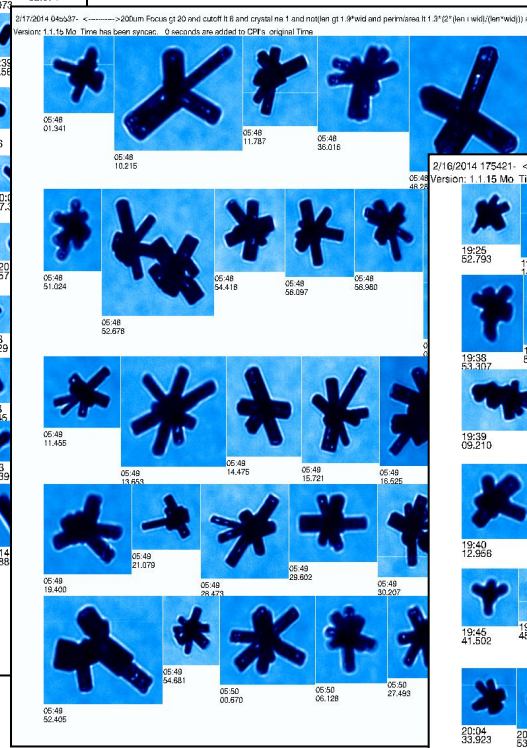
Spheroids



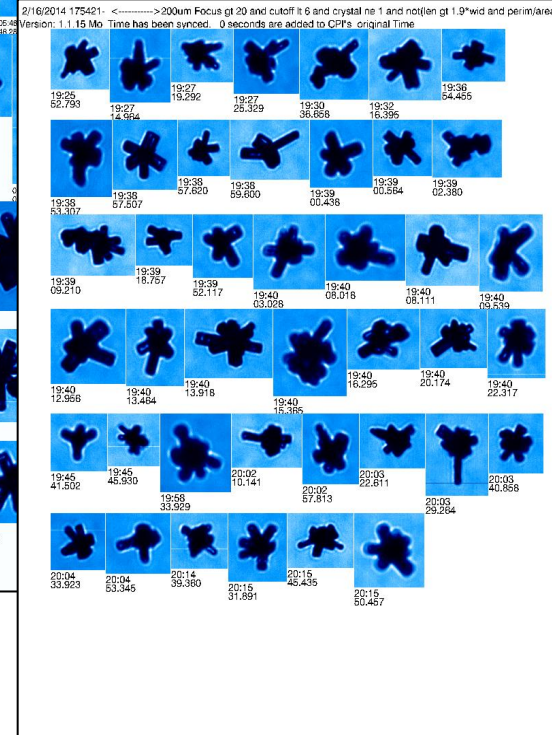
Columns



Rosettes

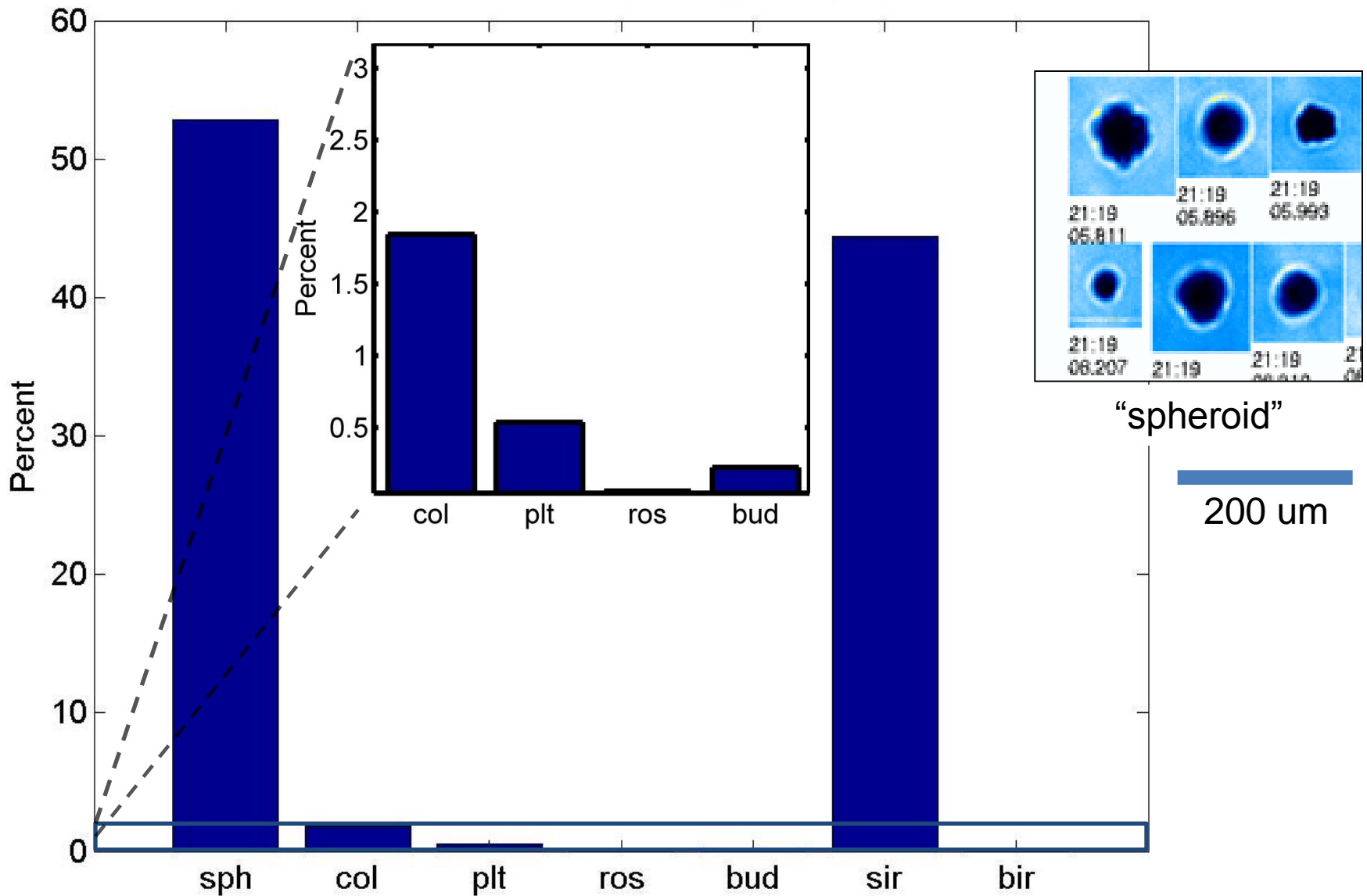


Budding Rosettes

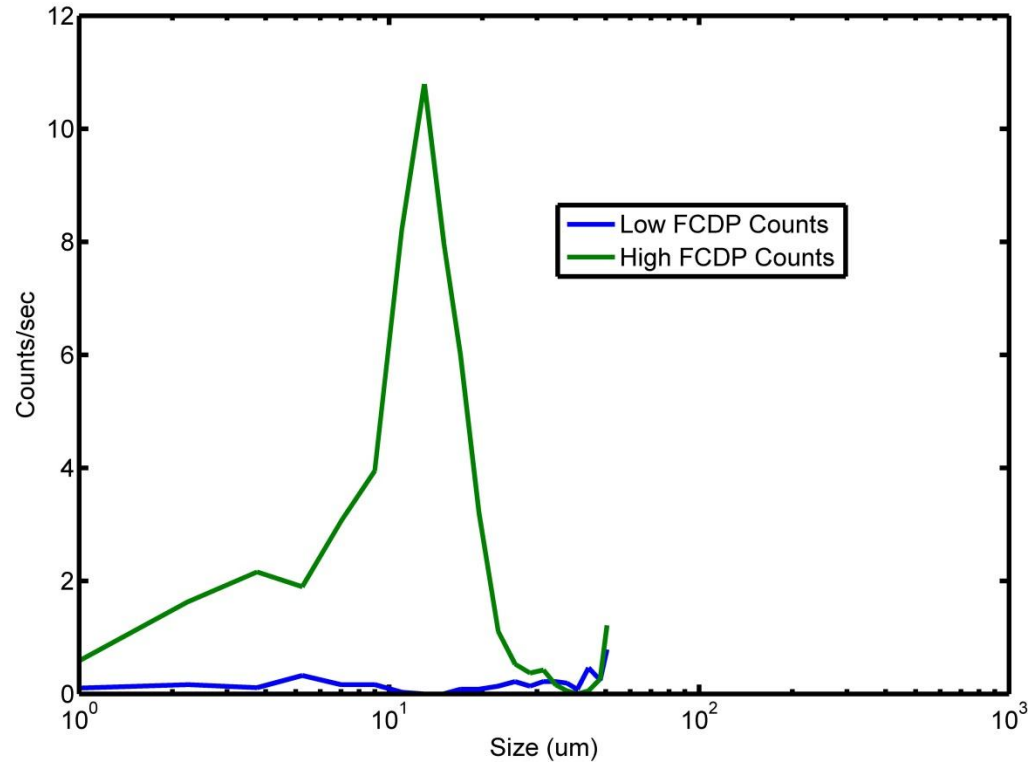
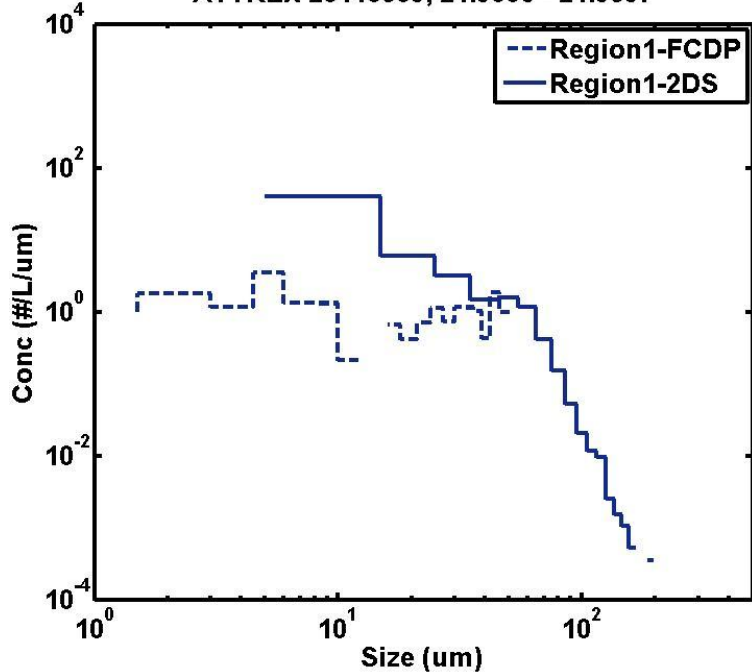
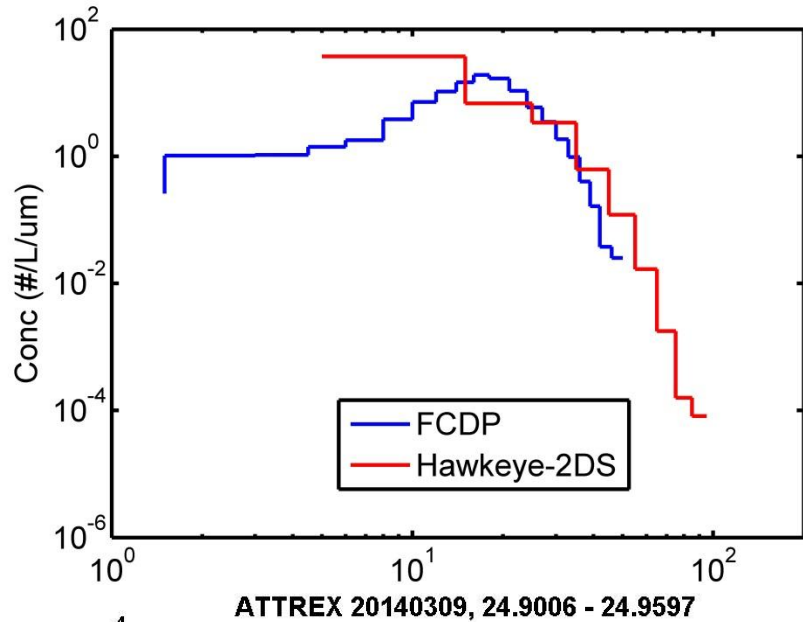


Habit classification following  
Lawson et al. (2006)

# Habit Occurrence Feb 16, 2014

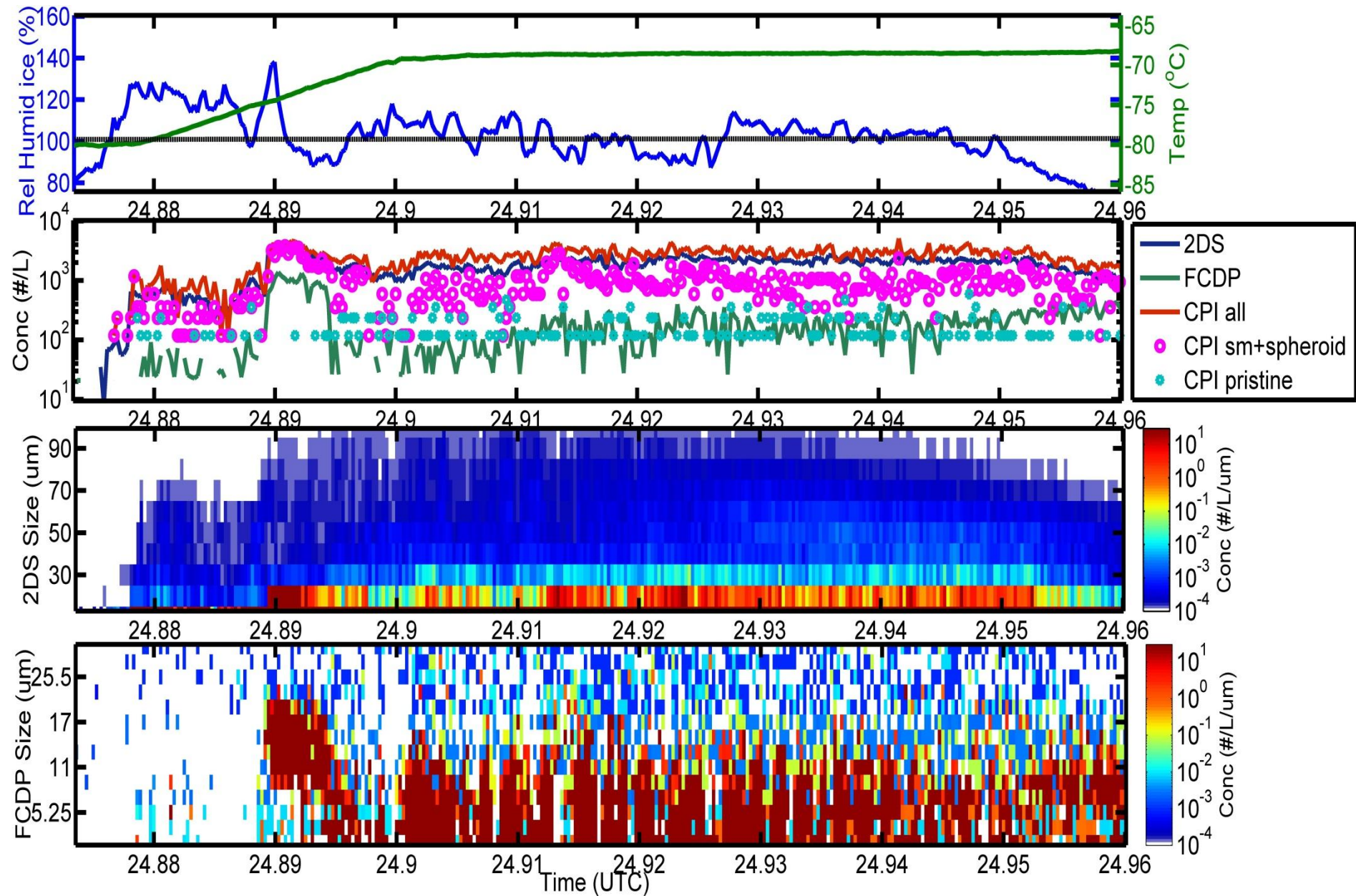


# Size Distributions

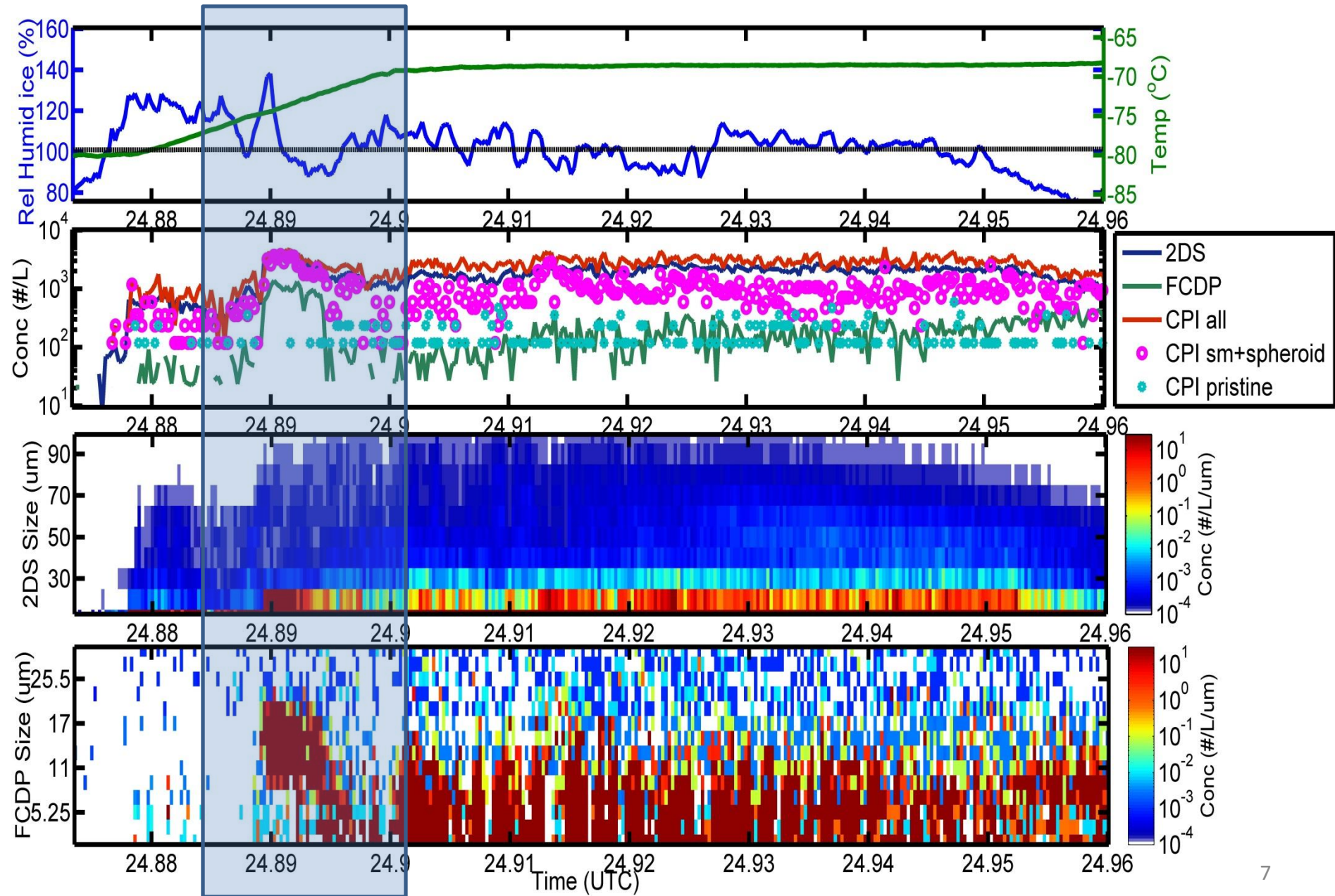


- If using FCDP, take a look at 2D-S as well
- Reliable FCDP measurements require higher bin counts per second

# March 9-10

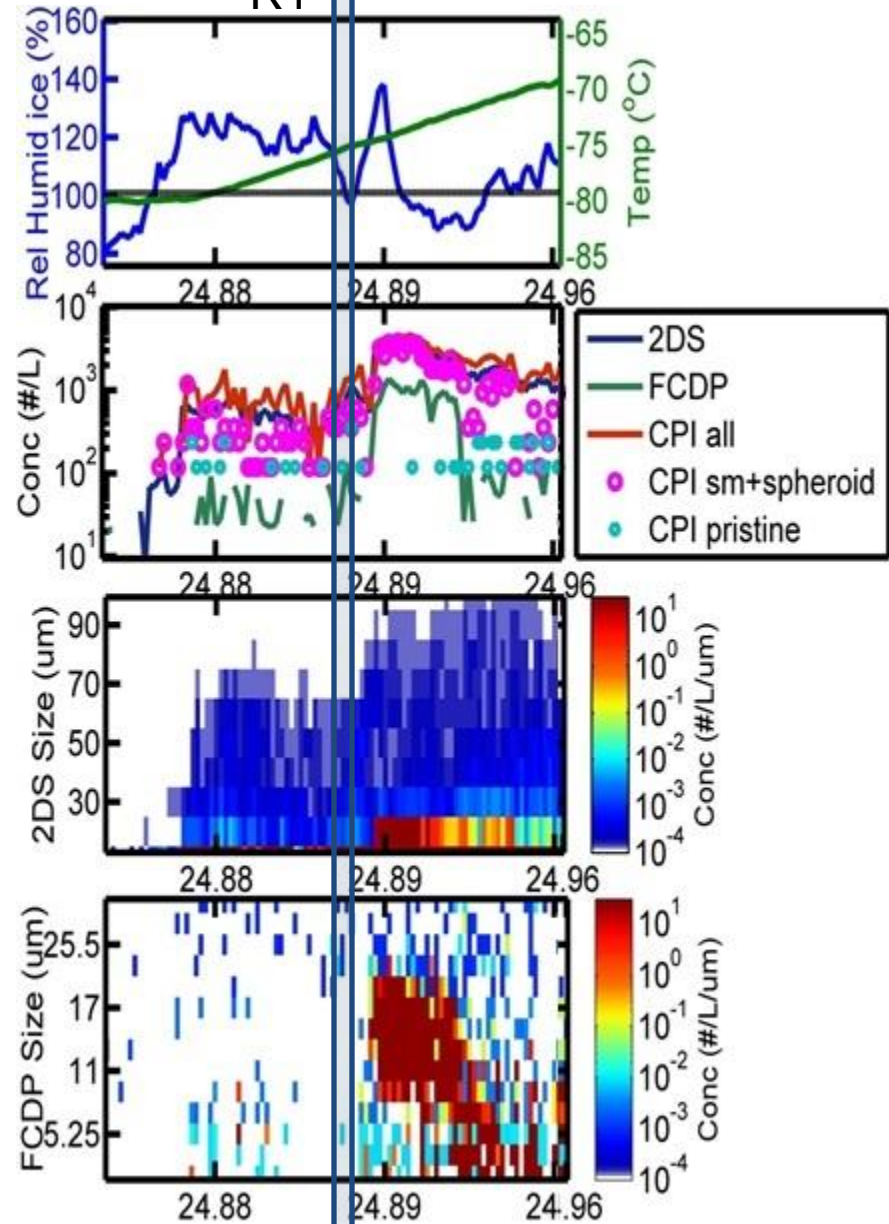


# March 9-10



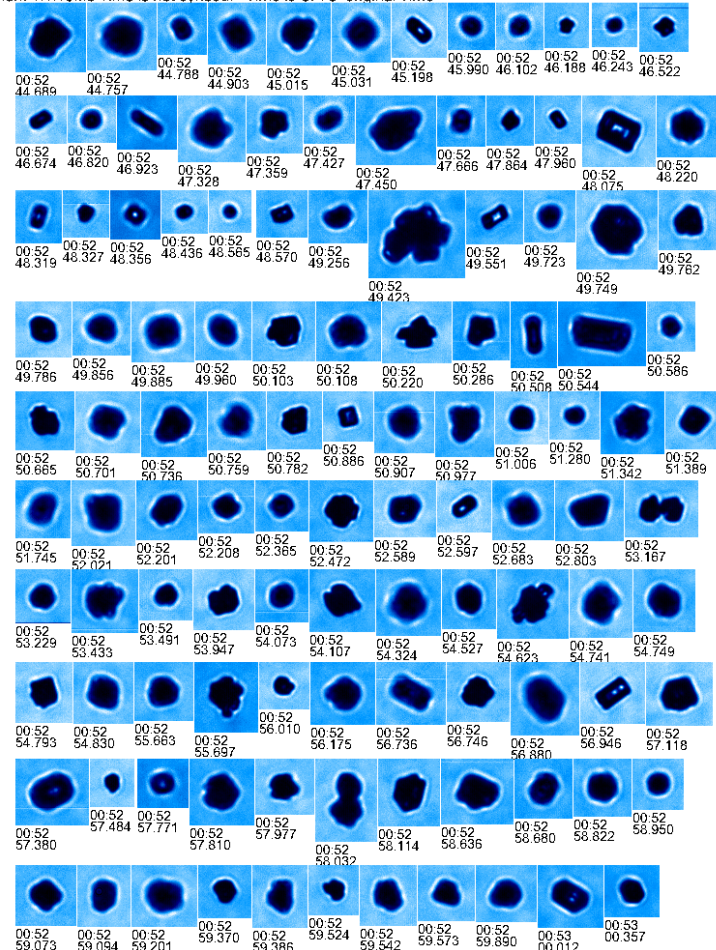
# March 9-10

R1



Region 1

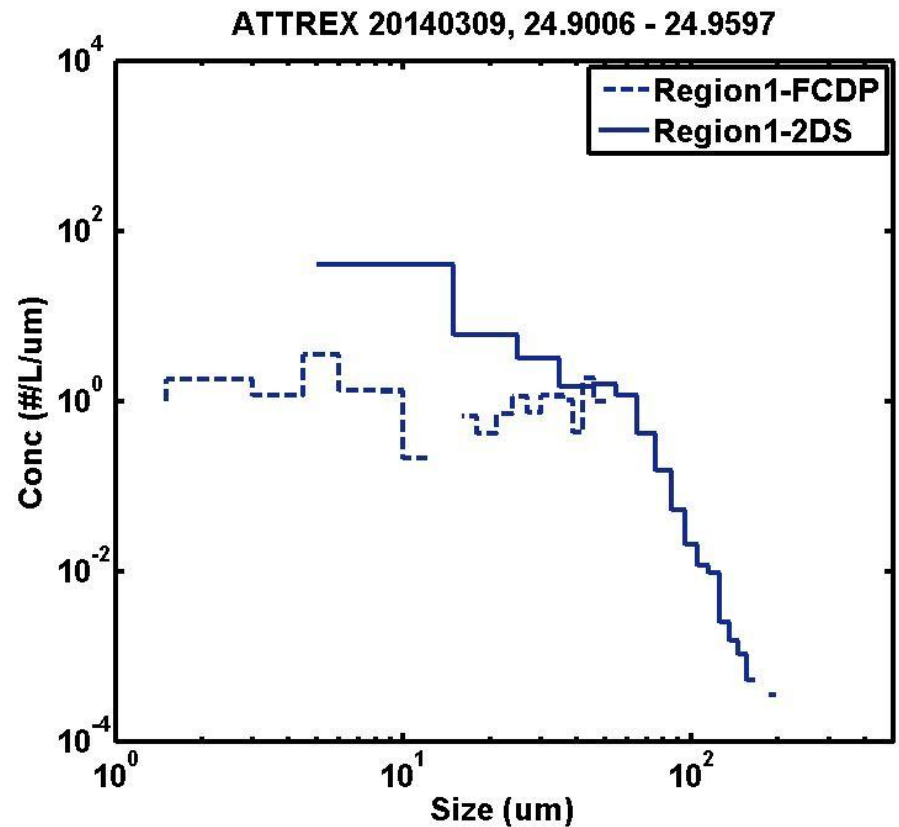
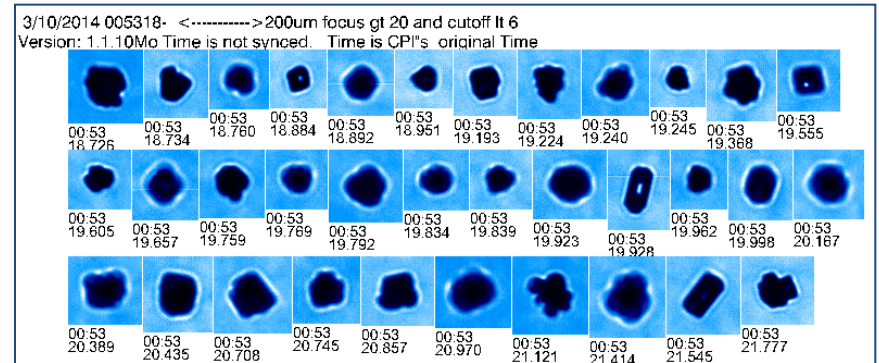
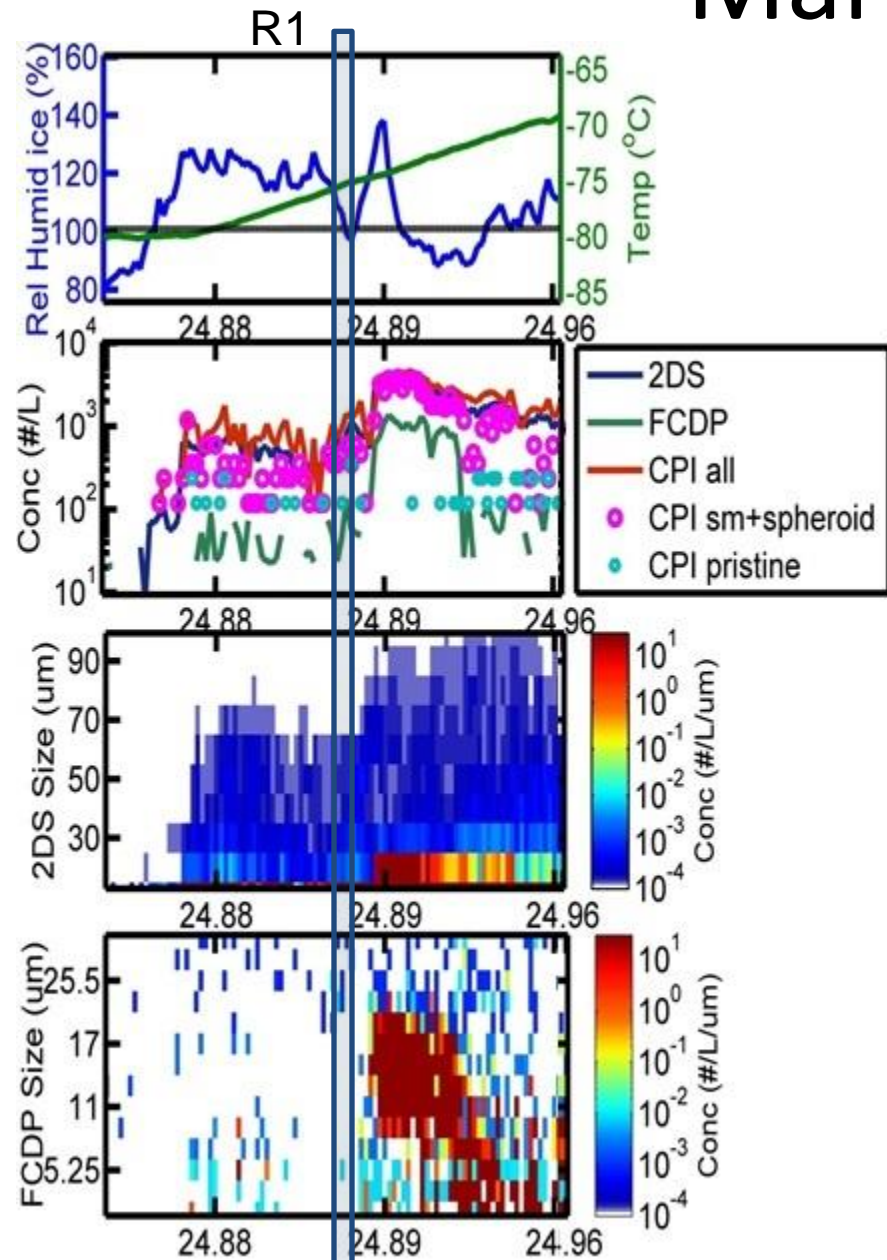
3/10/2014 005244- <----->200µm focus gt 20 and cutoff lt 6  
Version: 1.1.10Mo Time is not synced. Time is CPI's original Time



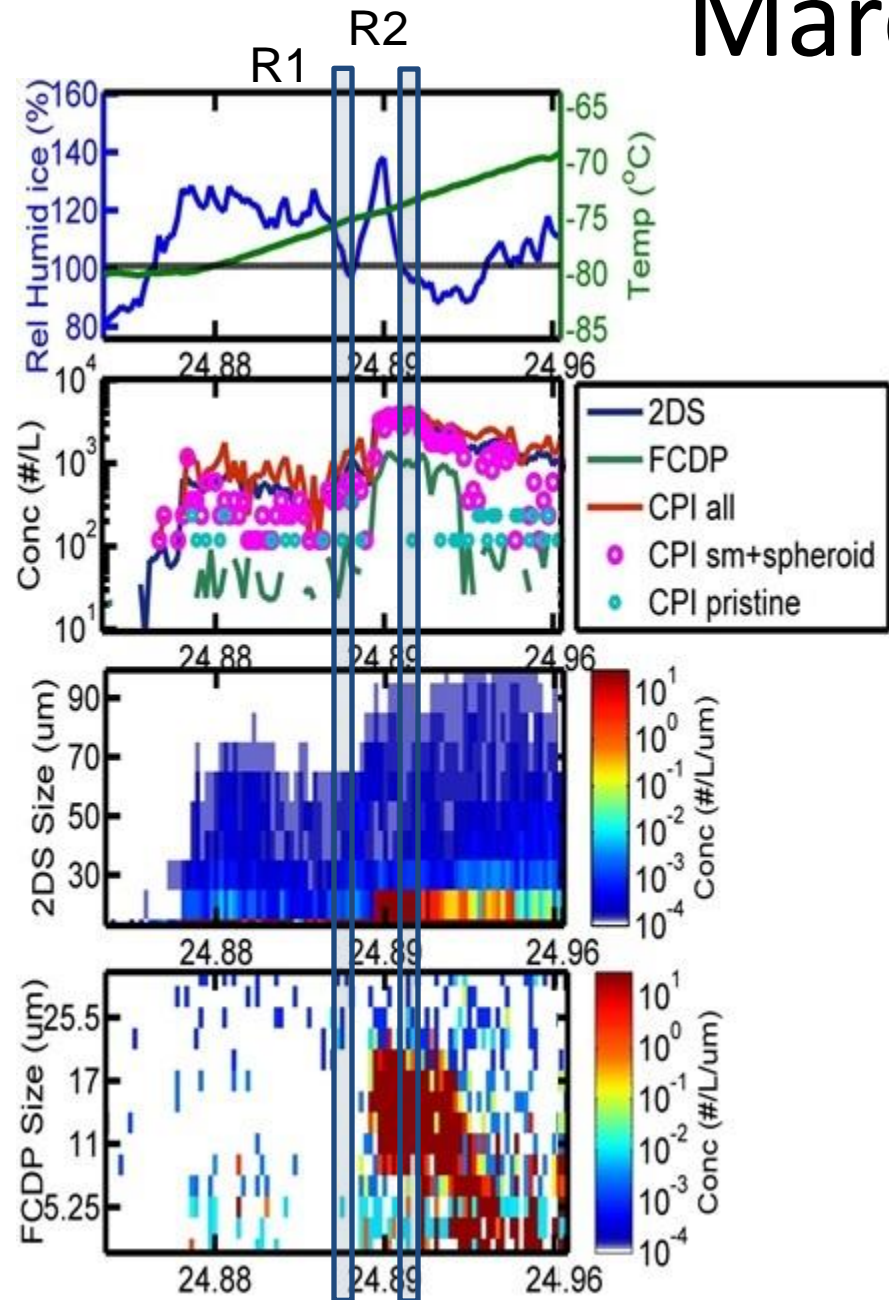


# March 9-10

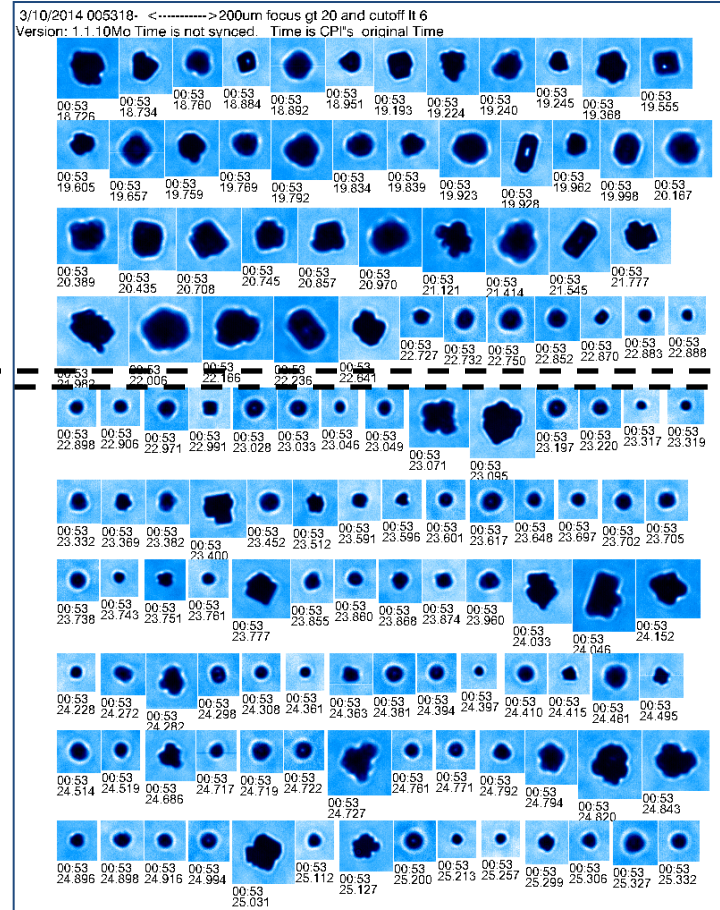
## Region 1



# March 9-10



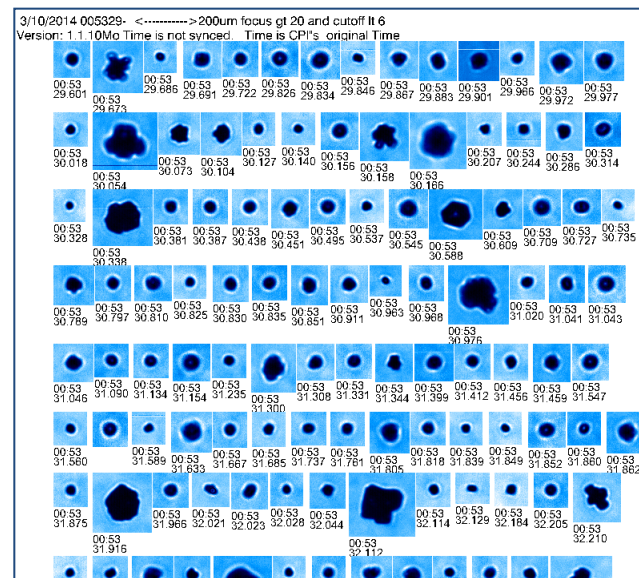
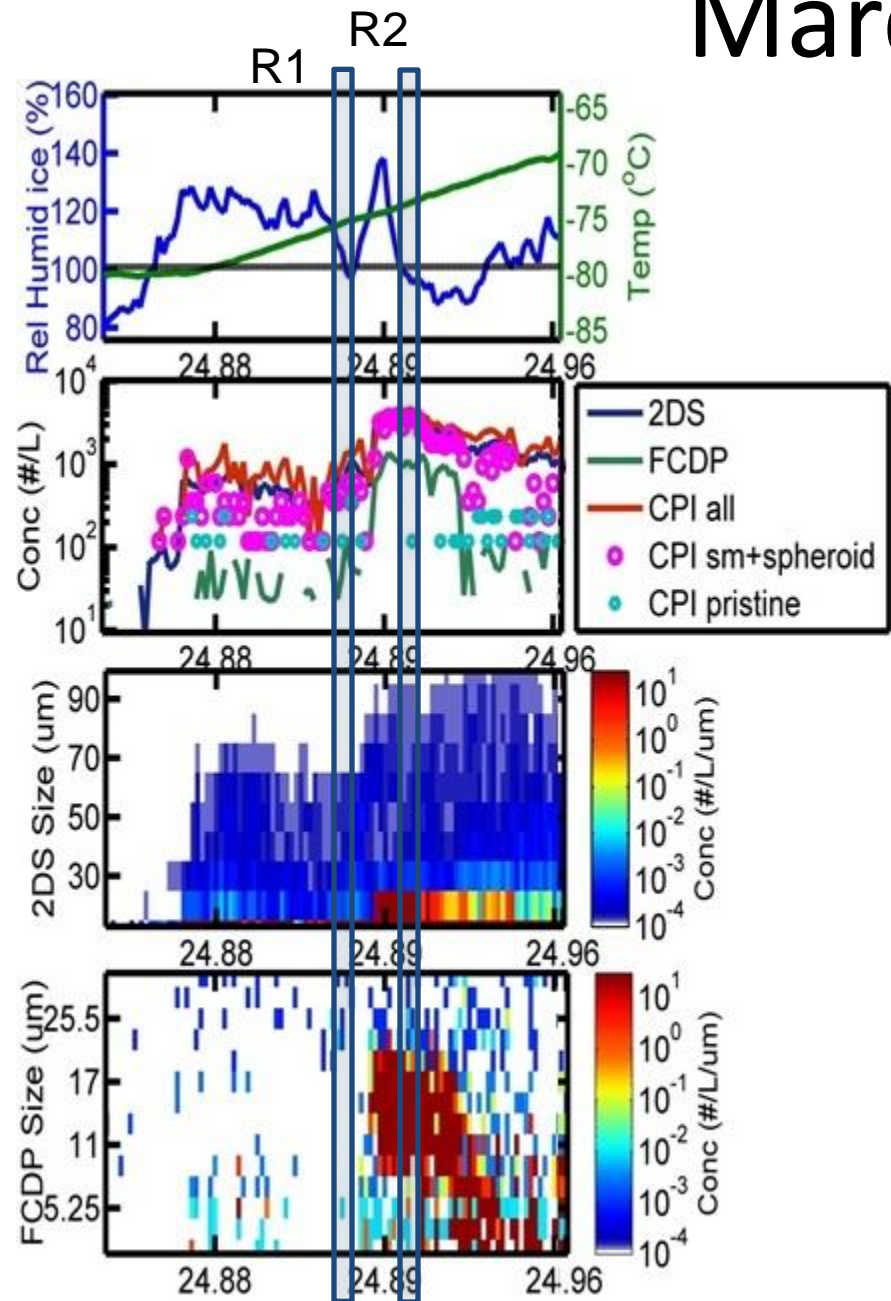
## Region 1



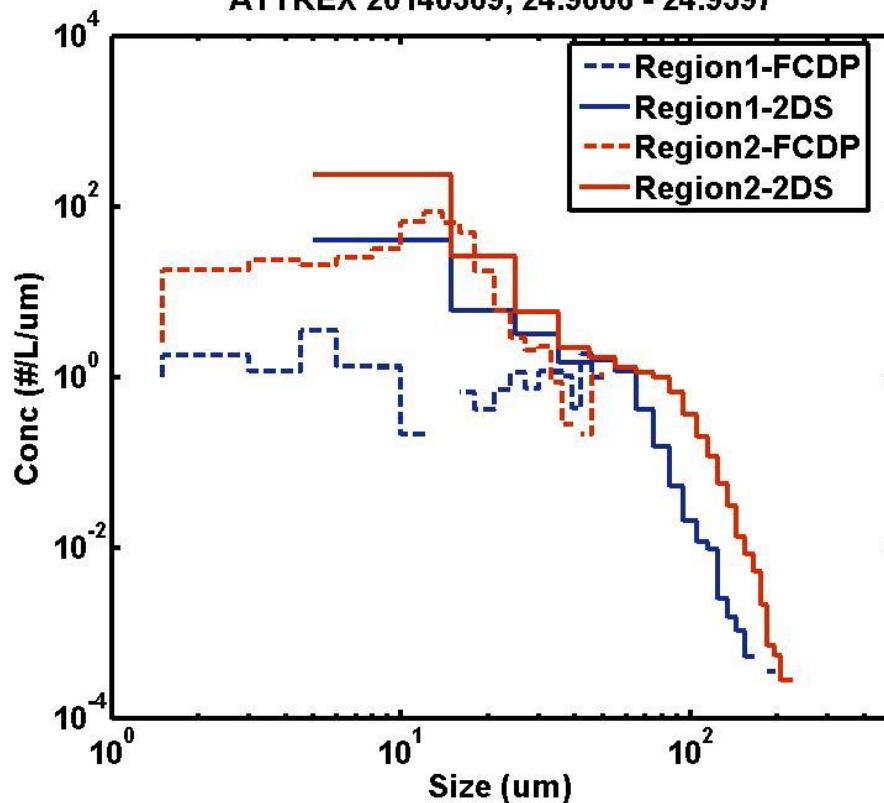
## Region 2

# March 9-10

## Region 2

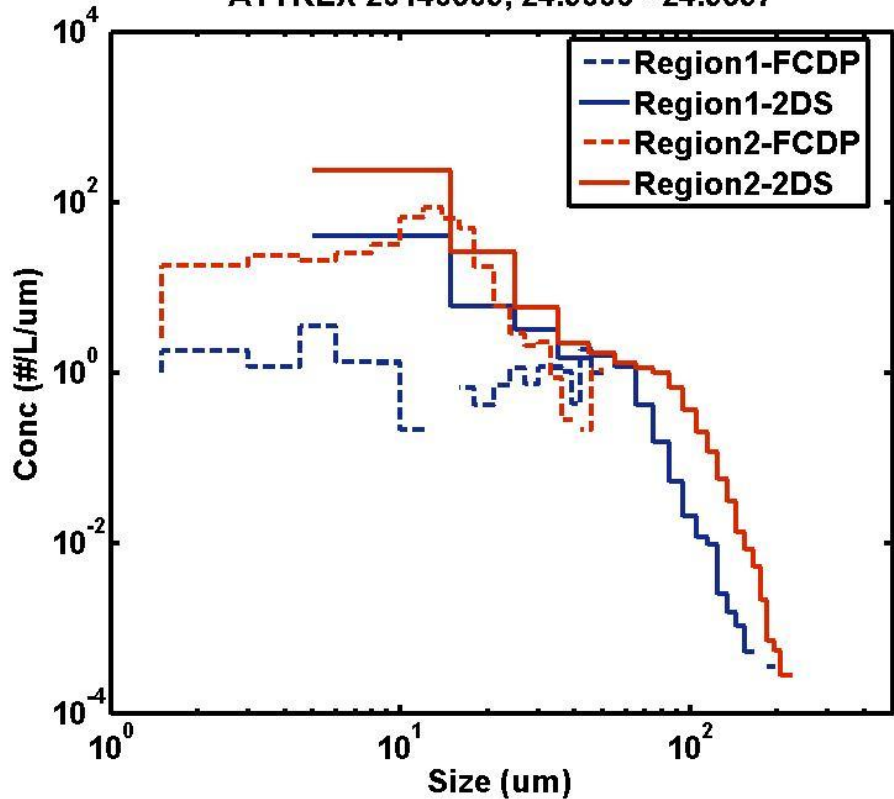


## ATTREX 20140309, 24.9006 - 24.9597

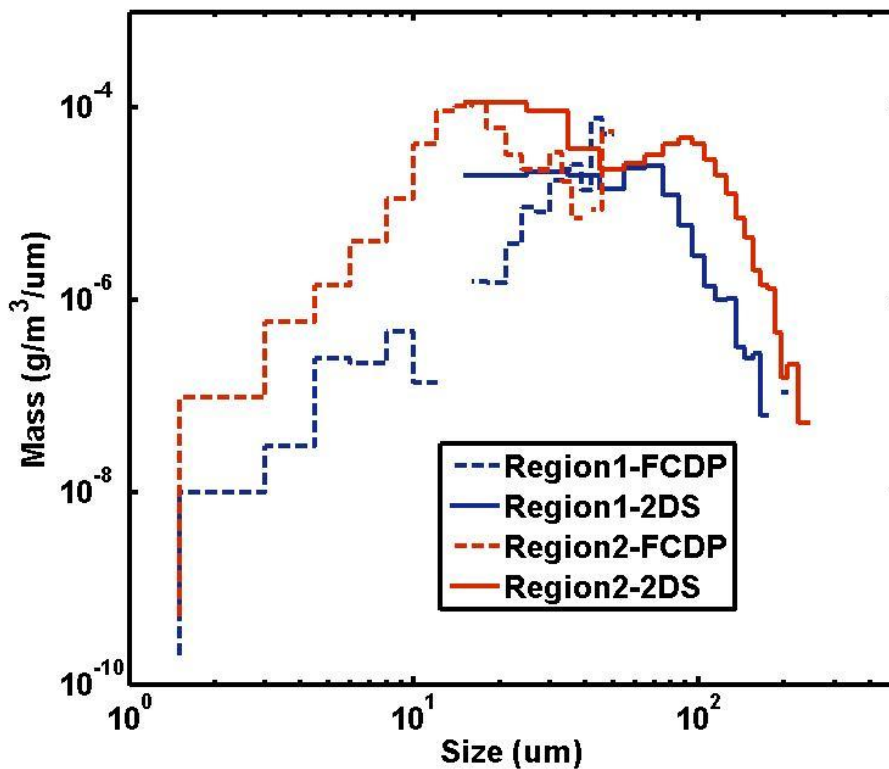


# March 9-10

ATTREX 20140309, 24.9006 - 24.9597



ATTREX 20140309, 24.9006 - 24.9597

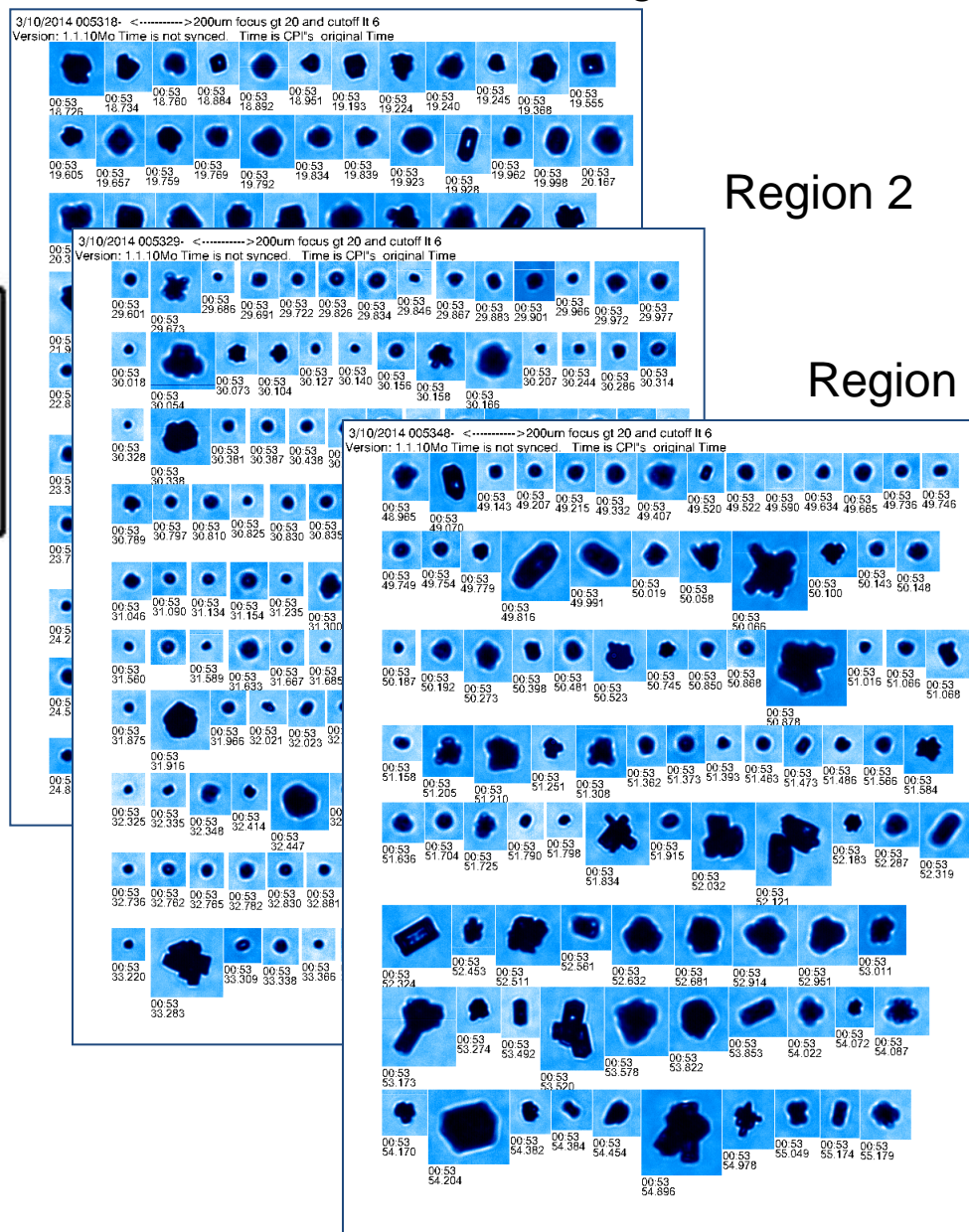
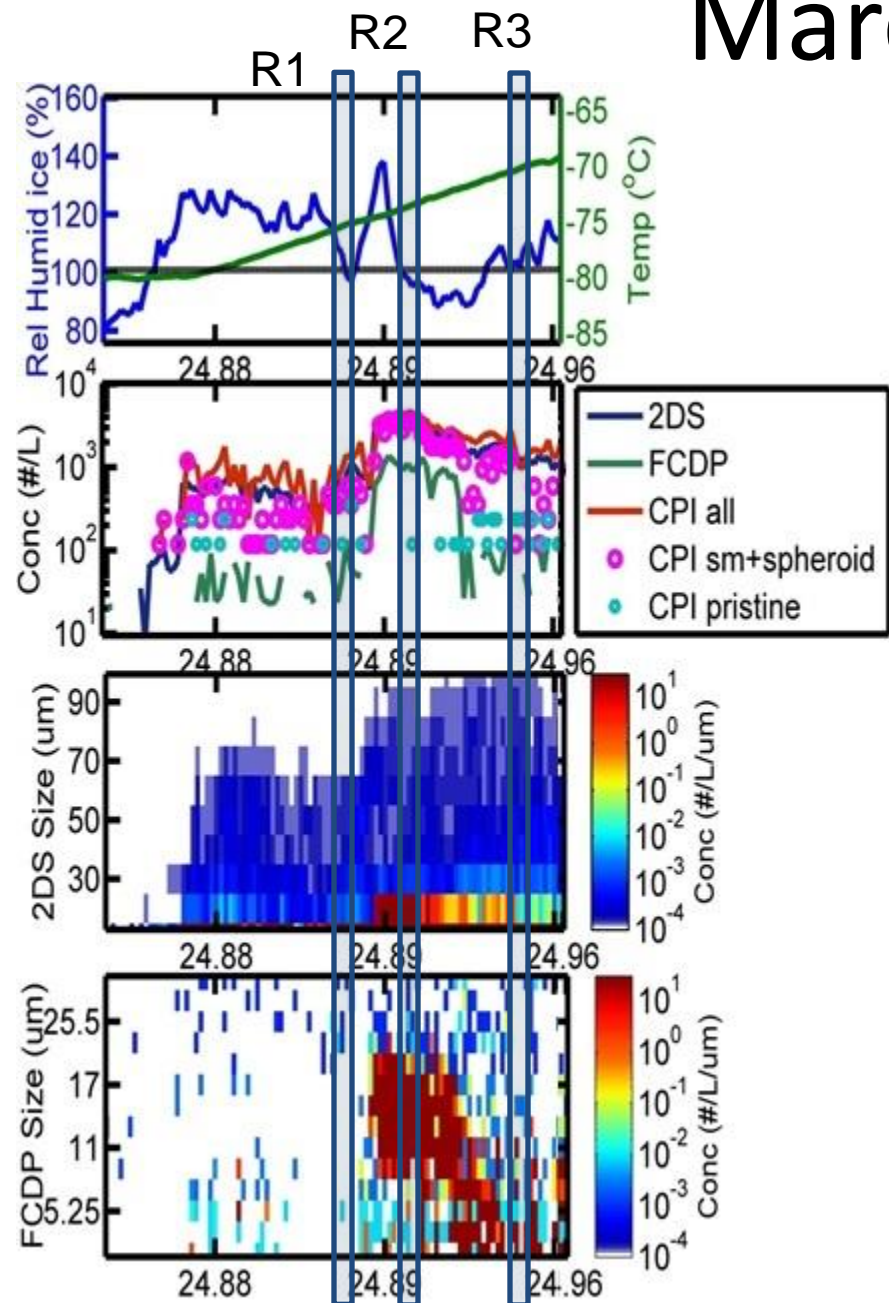


# March 9-10

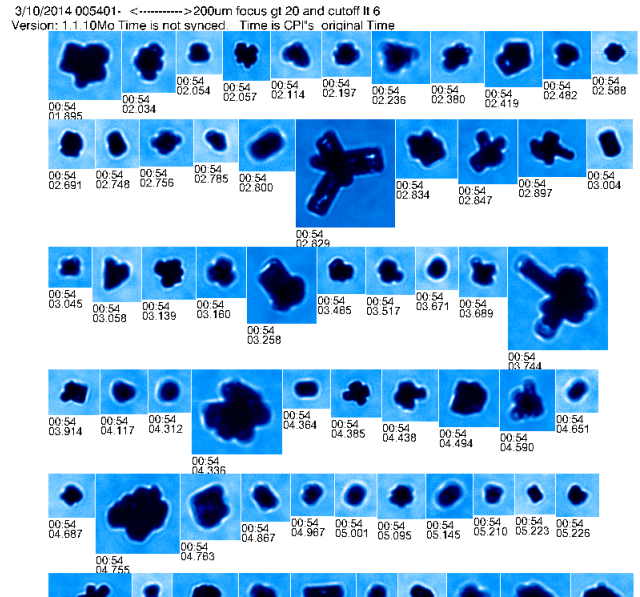
Region 1

Region 2

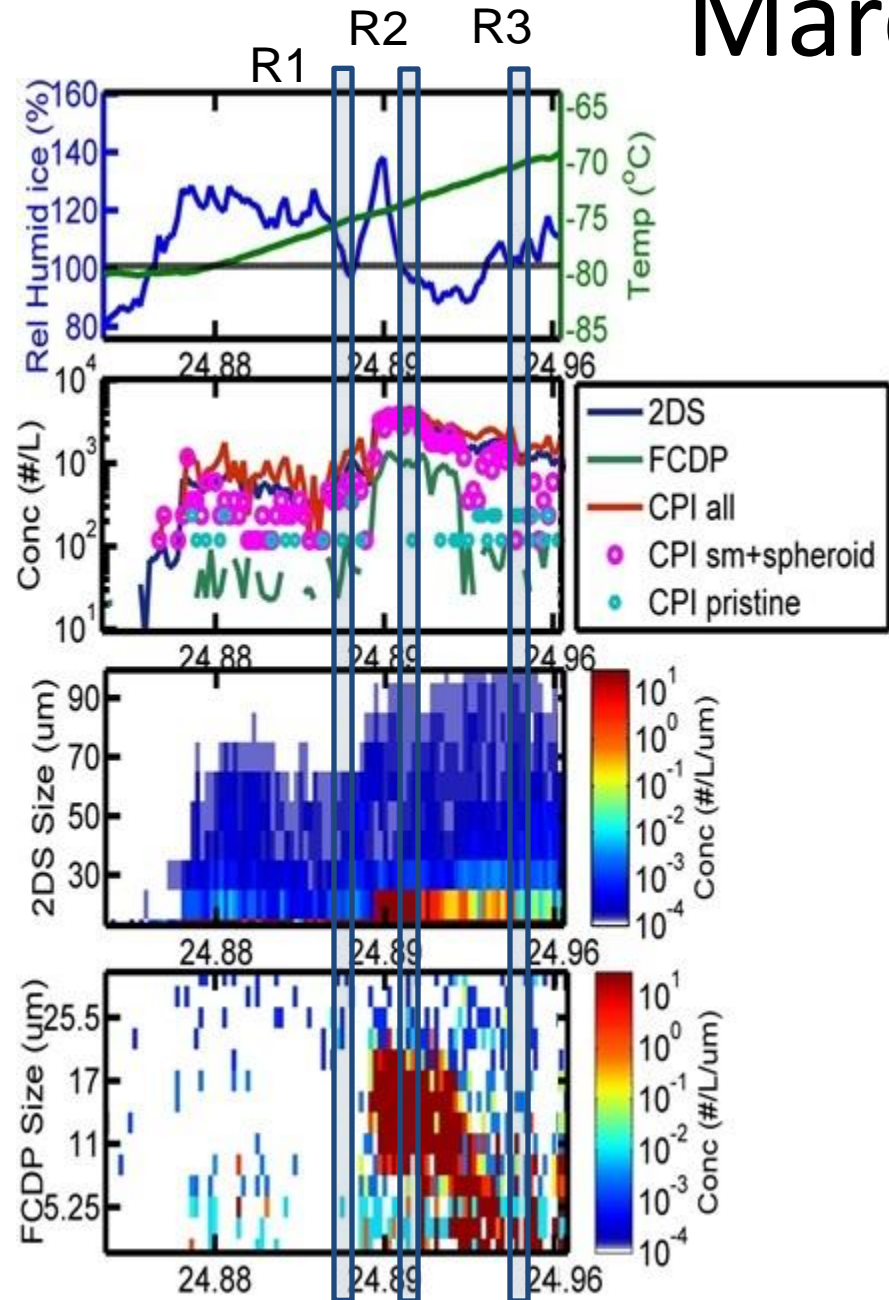
Region 3



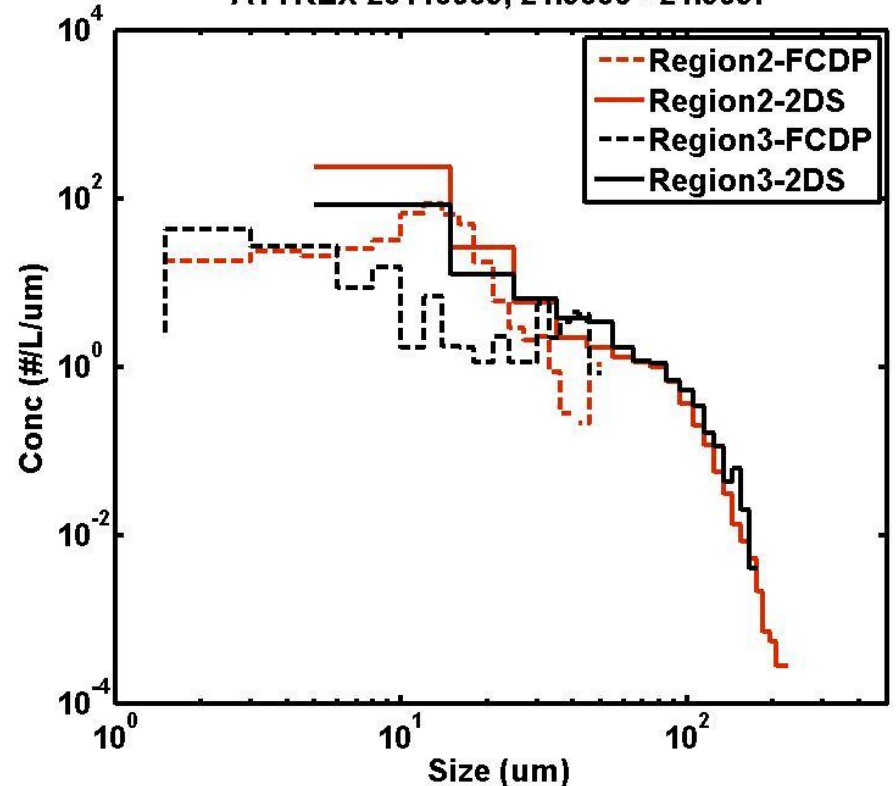
# March 9-10



Region 3

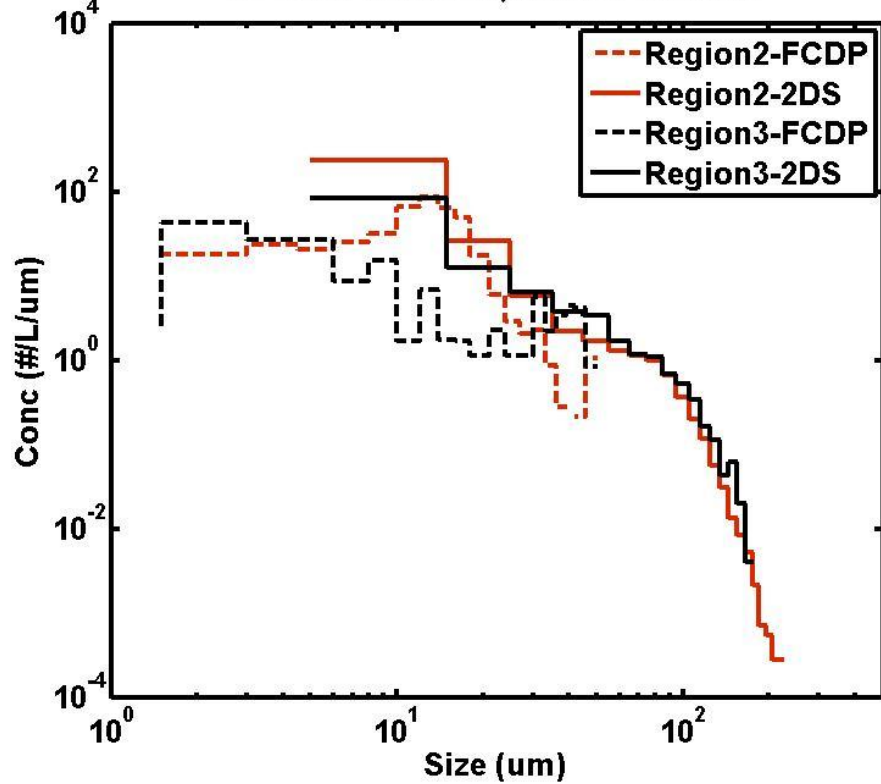


ATTREX 20140309, 24.9006 - 24.9597

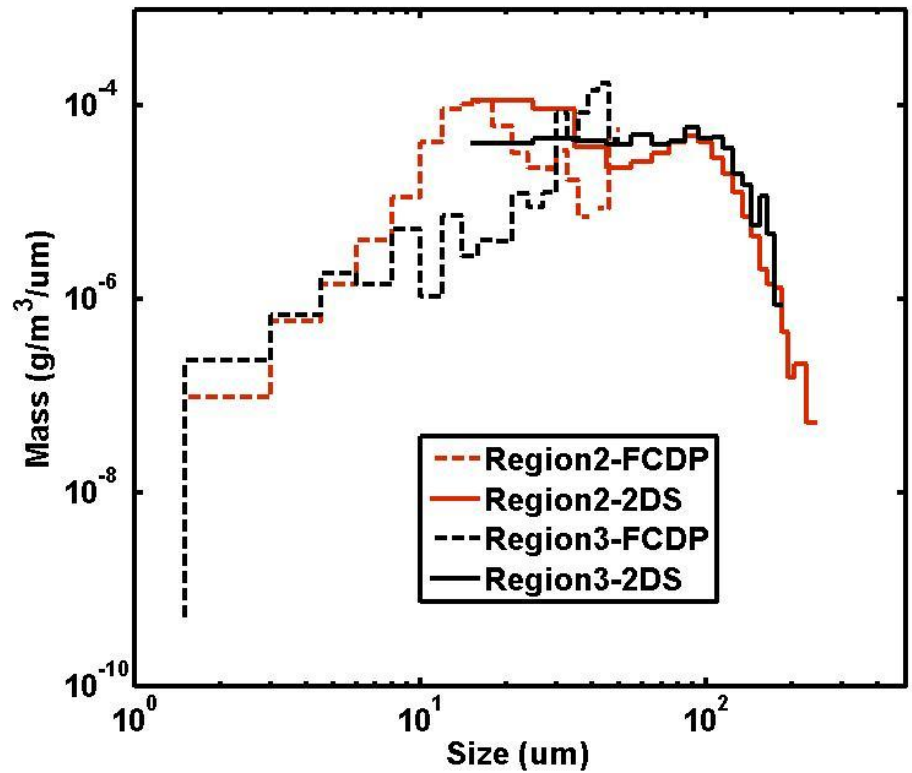


# March 9-10

ATTREX 20140309, 24.9006 - 24.9597



ATTREX 20140309, 24.9006 - 24.9597

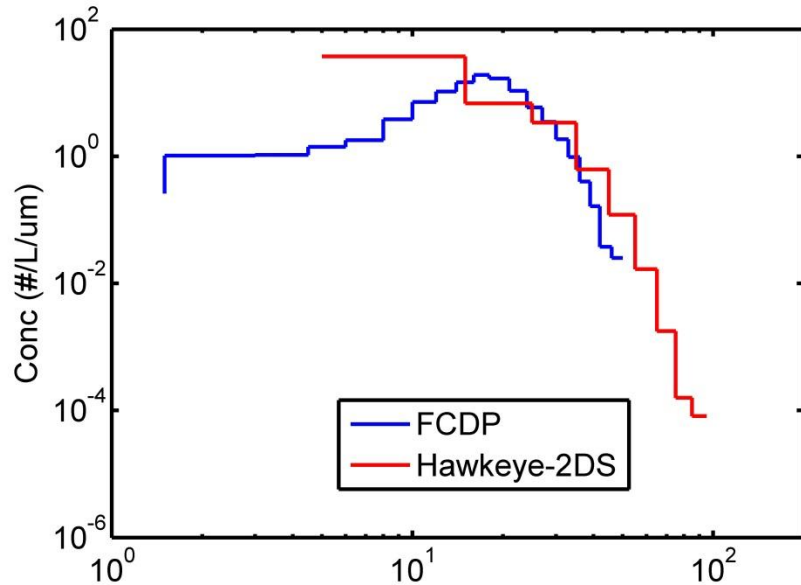


# Summary

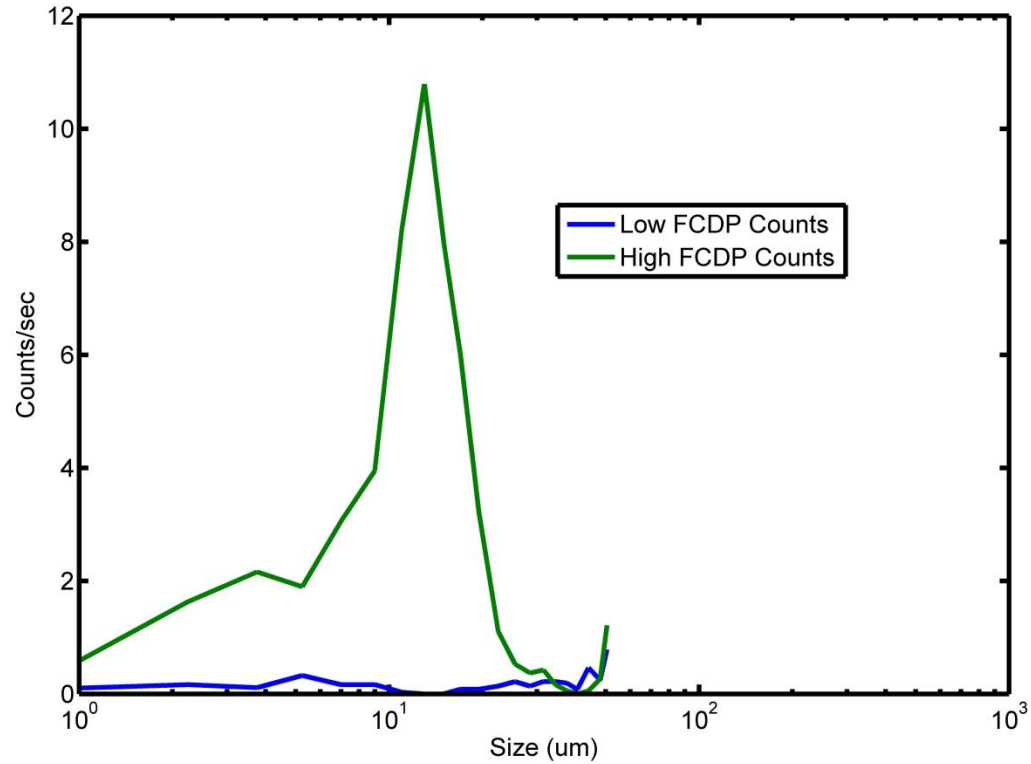
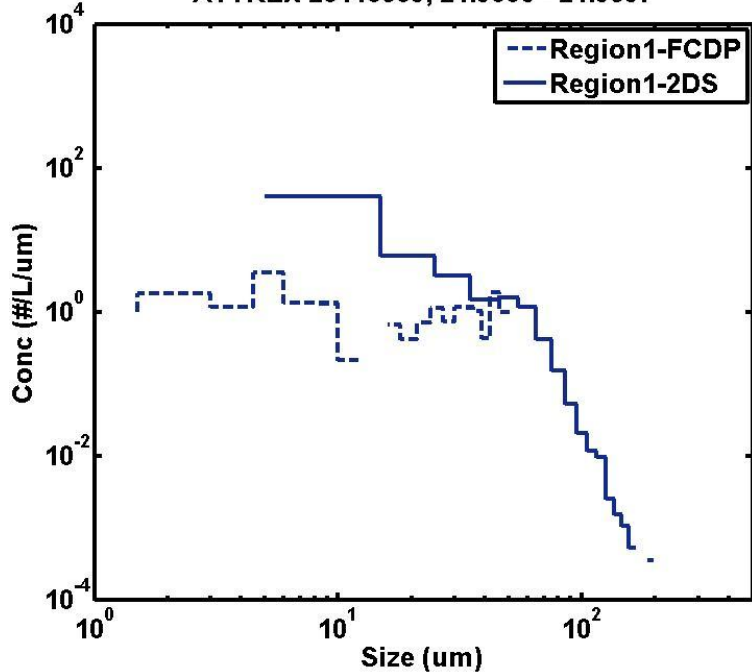
- High resolution images of cirrus particles allow for habit classification
  - Predominantly spheroid
  - Small irregulars
  - Small percentage of columns, plates, rosettes, bullet rosettes
- Continued investigation of habit classification as a function of RH<sub>ice</sub> and temperature for varying cirrus types
- Good correlation between particle probes and NOAA water vapor observations
- Evidence of homogeneous nucleation
- For questions on Hawkeye or FCDP data please contact us



# Size Distributions



ATTREX 20140309, 24.9006 - 24.9597



- If using FCDP, take a look at 2D-S as well
- Reliable FCDP measurements require higher bin counts per second



# SSice vs Temperature Feb 16

